



PRICE REDUCED | CALL FOR DETAILS

Asking Price:

\$390,000

(\$188,406/Acre)

CONTACT US



Barbara Eaton

248 226 1822

barbara.eaton@colliers.com



John Salsberry

248 226 1636

john.salsberry@colliers.com

Colliers Detroit

400 W 4th Street, Suite 350

Royal Oak, MI 48067

colliers.com/detroit



DEVELOPMENT OPPORTUNITY

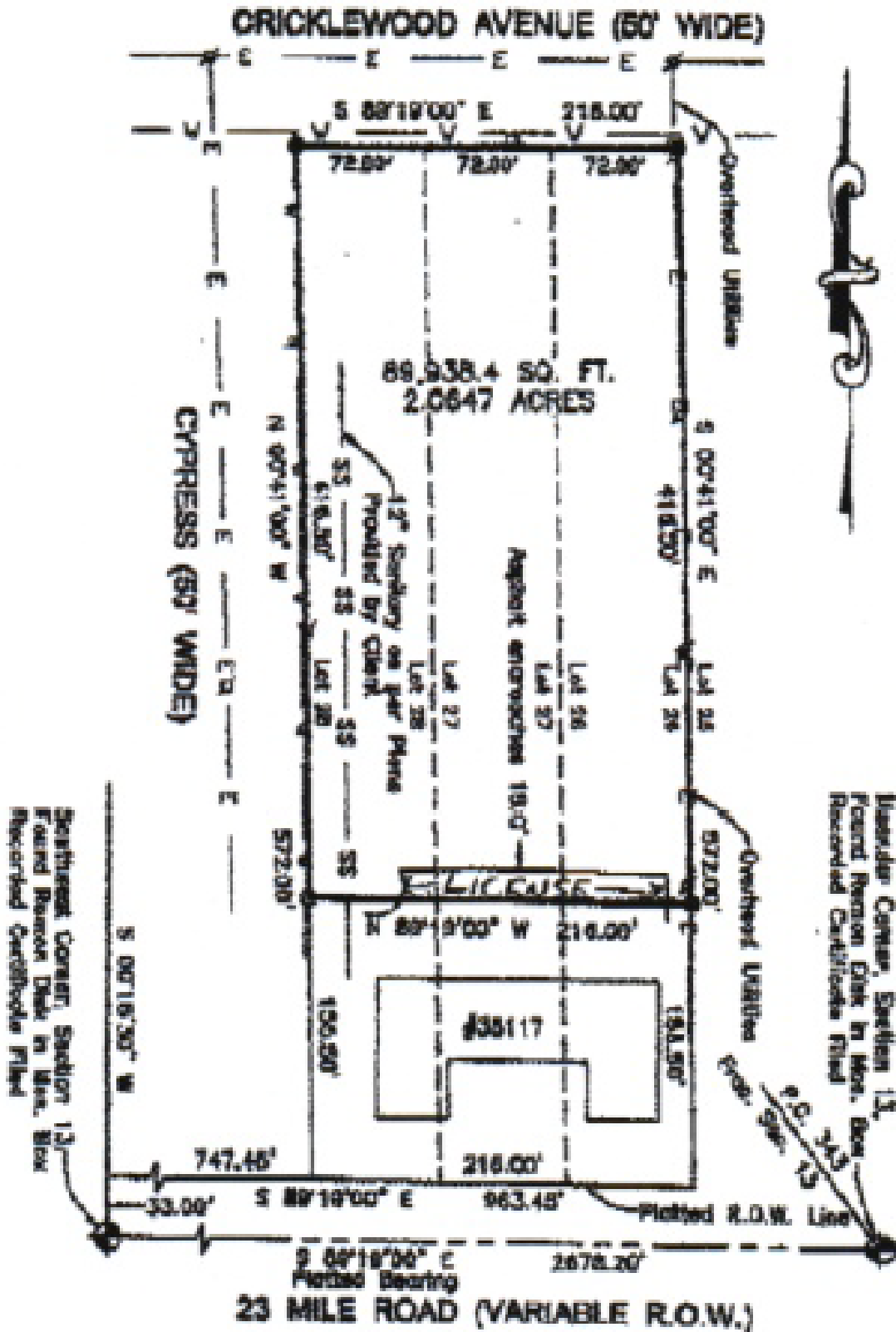
Cricklewood Blvd & Cypress St New Baltimore, MI

2.07 Acres of Vacant Land For Sale

Property Highlights

- 2.07 Acres
- Located in Macomb County
- Zoned RM 1 – Multiple Family Residential
- Frontage of 216 Feet
- \$390,000
- **If a Deal is Transacted by the End of Q2, 2025
Co-Broker Will Receive an Extra Point**

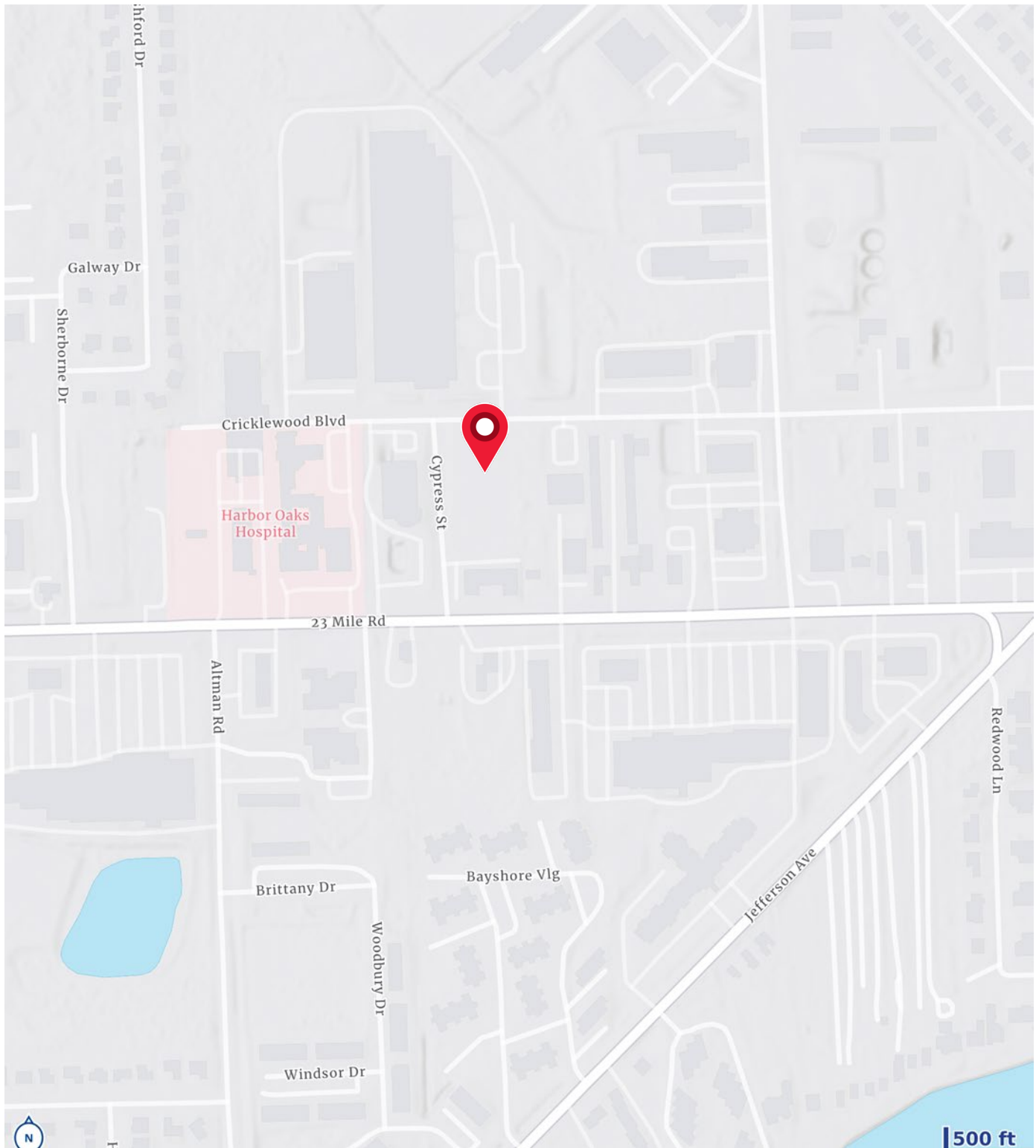
Site Plan



2.07 ACRES VACANT LAND FOR SALE

Colliers

Location Map



2.07 ACRES VACANT LAND FOR SALE

Colliers

Merchant Map



Demographics

CURRENT YEAR SUMMARY	1 MILE RADIUS	3 MILE RADIUS	5 MILE RADIUS
Total Population	7,032	36,410	67,955
Total Households	2,931	13,913	25,805
Total Family Households	1,797	9,681	17,824
Average Household Size	2.34	2.59	2.56
Median Age	43.3	40.0	39.3
Population Age 21+	5,438	26,863	50,478
2010 - 2021 Population: Annual Growth Rate (CAGR)	0.47%	0.21%	0.50%
5 YEAR PROJECTED TRENDS: ANNUAL RATE	1 MILE RADIUS	3 MILE RADIUS	5 MILE RADIUS
Population	0.18%	0.44%	0.37%
Households	0.32%	0.72%	0.62%
Families	0.21%	0.61%	0.51%
CURRENT YEAR POPULATION BY SEX	1 MILE RADIUS	3 MILE RADIUS	5 MILE RADIUS
Male Population / % Male	3,406 / 48.4%	17,812 / 48.9%	33,955 / 50.0%
Female Population / % Female	3,626 / 51.6%	18,598 / 51.1%	34,000 / 50.0%
INCOME & HOUSEHOLDS SUMMARY	1 MILE RADIUS	3 MILE RADIUS	5 MILE RADIUS
2023 Median Household Income	\$69,609	\$84,761	\$79,809
Average Household Income	\$99,505	\$109,459	\$102,361
Per Capita Income	\$41,609	\$42,530	\$39,079
SUMMARY BUSINESS DATA	1 MILE RADIUS	3 MILE RADIUS	5 MILE RADIUS
Total Daytime Population	8,032	27,552	56,143
Daytime Population: Workers	4,187	9,326	22,730
Daytime Population: Residents	3,845	18,226	33,413

Data Notes:

- Household population includes persons not residing in group quarters. Average Household Size is the household population divided by total households. Persons in families include the householder and persons related to the householder by birth, marriage, or adoption.
- Income represents the preceding year, expressed in current dollars. Household income includes wage and salary earnings, interest dividends, net rents, pensions, SSI and welfare payments, child support, and alimony.
- Per Capita Income represents the income received by all persons aged 15 years and over divided by the total population.



Barbara Eaton
248 226 1822
barbara.eaton@colliers.com



John Salsberry
248 226 1636
john.salsberry@colliers.com