



## Sublease Opportunity | 55 E. Camperdown Way

### Brantley Anderson

Senior Brokerage Associate

+1 864 527 5440

brantley.anderson@colliers.com

### Taylor Allen, CCIM

Senior Brokerage Associate

+1 864 527 5423

taylor.allen@colliers.com

### Bailey Tollison

Brokerage Associate

+1 864 527 5419

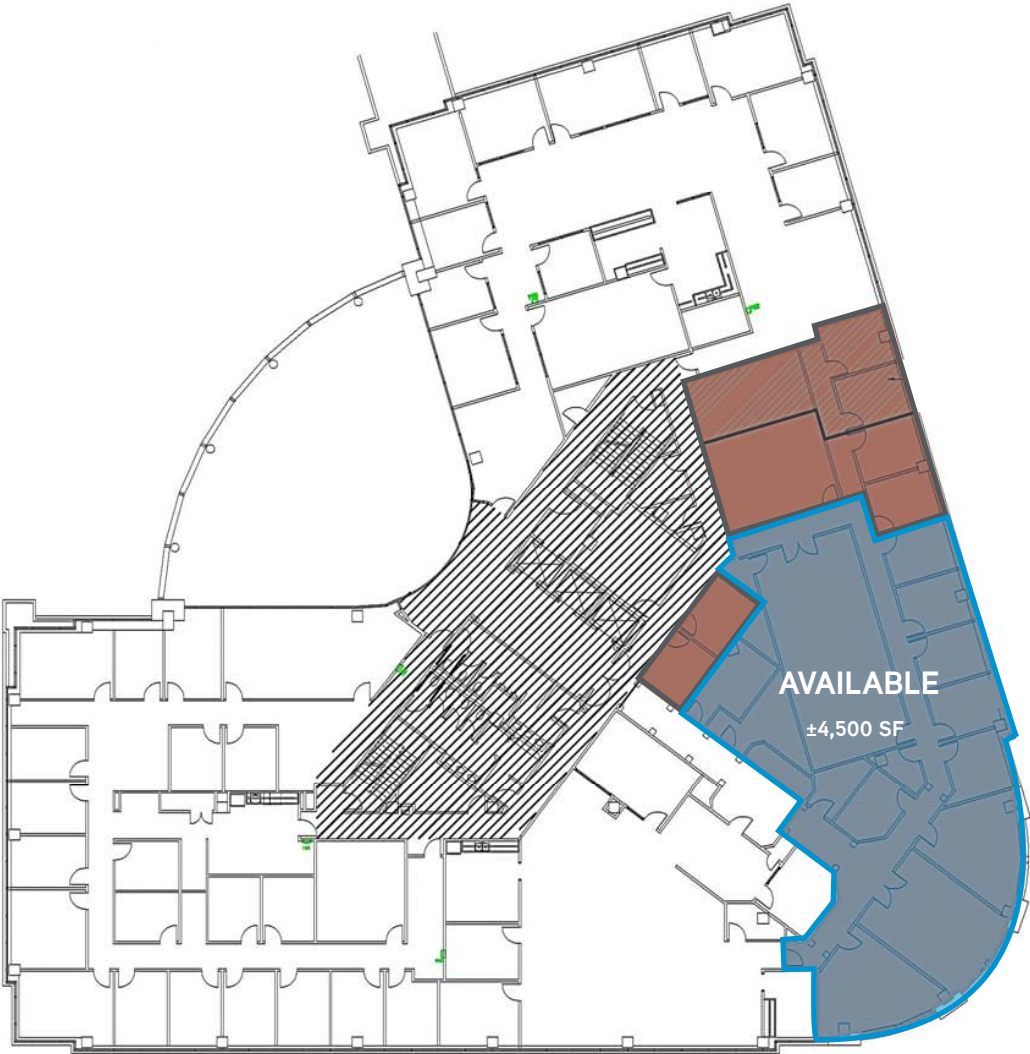
bailey.tollison@colliers.com

This document has been prepared by Colliers International for advertising and general information only. Colliers International makes no guarantees, representations or warranties of any kind, expressed or implied, regarding the information including, but not limited to, warranties of content, accuracy and reliability. Any interested party should undertake their own inquiries as to the accuracy of the information. Colliers International excludes unequivocally all inferred or implied terms, conditions and warranties arising out of this document and excludes all liability for loss and damages arising there from. This publication is the copyrighted property of Colliers International and/or its licensor(s). ©2017. All rights reserved.

Colliers International  
55 E Camperdown Way | Suite 200  
Greenville, SC 29601  
P: +1 864 297 4950







BUILDING SPECIFICATIONS

Availability	±4,500 SF
Lease Rate	\$21.30/SF
Lease Type	Sublease
Available Until	September 30, 2021

AMENITIES



**PARKING**  
Free private garage parking with visitor spaces available



**RECEPTIONIST**  
Full-time building receptionist



**SECURITY**  
24/7 card access



**LOCATION**  
Steps from Falls Park and Main Street



**WALKABILITY**  
Walking distance from many restaurants and retailers

## THE AREA

55 E. Camperdown Way is located in Greenville's central business district and benefits from convenient access to restaurants, shopping, Falls Park, and the Swamp Rabbit Trail.

## RESTAURANTS

- |                       |                                   |
|-----------------------|-----------------------------------|
| 1 Marble Slab         | 24 The Chocolate Moose            |
| 2 Methodical Coffee   | 25 Soby's                         |
| 3 Cantina 76          | 26 Connolly's Irish Pub           |
| 4 Coffee Underground  | 27 Rick Erwin's Nantucket Seafood |
| 5 Ink N Ivy           | 28 UP on the Roof                 |
| 6 Tupelo Honey        | 29 Genevieve's                    |
| 7 Trio                | 30 Ruth's Chris Steak House       |
| 8 Reys                | 31 Larkin's                       |
| 9 Barley's            | 32 The Lazy Goat                  |
| 10 Trappe Door        | 33 Halls Chophouse                |
| 11 Sticky Fingers     | 34 Starbucks                      |
| 12 Sully's Steamers   | 35 Spill the Beans                |
| 13 Oak & Honey        | 36 Rick's Deli & Market           |
| 14 Cantinflas         | 37 Pour Taproom                   |
| 15 Port City Java     | 38 Jianna                         |
| 16 Takosushi          | 39 Mary's at Falls Cottage        |
| 17 Tropical Grille    | 40 Rick Erwin's                   |
| 18 Jimmy John's       | 41 Marble Slab Creamery           |
| 19 Green Fetish       | 42 Smoke on the Water             |
| 20 Yee-Haw            | 43 Mellow Mushroom                |
| 21 Nose Dive          | 44 The Velo Fellow                |
| 22 Carolina Ale House | 45 Eggs Up Grill                  |
| 23 Luna Rosa          | 46 Husk                           |

