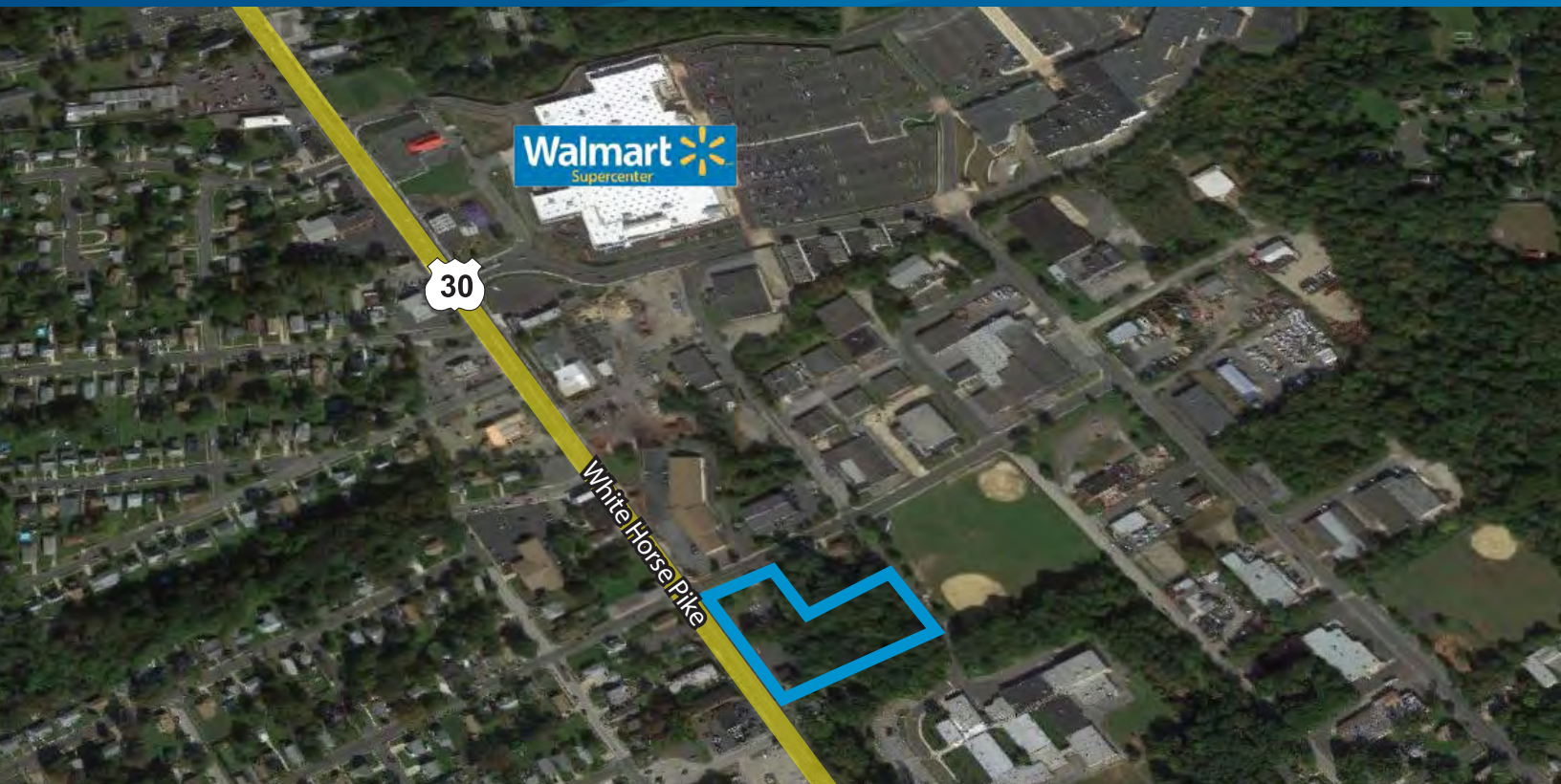


FOR SALE/LEASE

# 3 Acres Commercial Land



WHITE HORSE PIKE & EVERGREEN, SOMERDALE, NEW JERSEY



## Property Features

- > 3+/- acres
- > Zoned B-1 Business
- > Fully approved for a 6,000 SF out-patient medical office
- > Traffic counts of approximately 29,000 VPD along White Horse Pike

## Contact

TONY DIDIO, SIOR  
VICE PRESIDENT  
+1 609 820 5900  
[tony.didio@colliers.com](mailto:tony.didio@colliers.com)

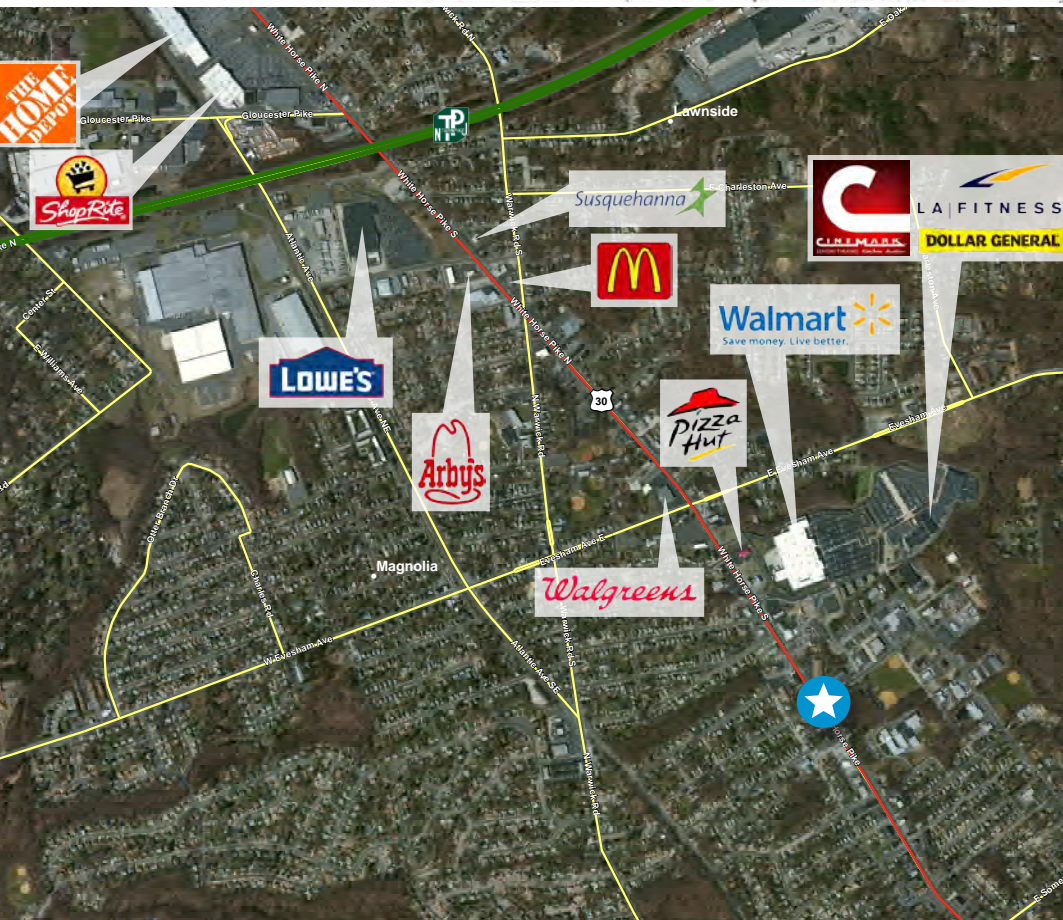
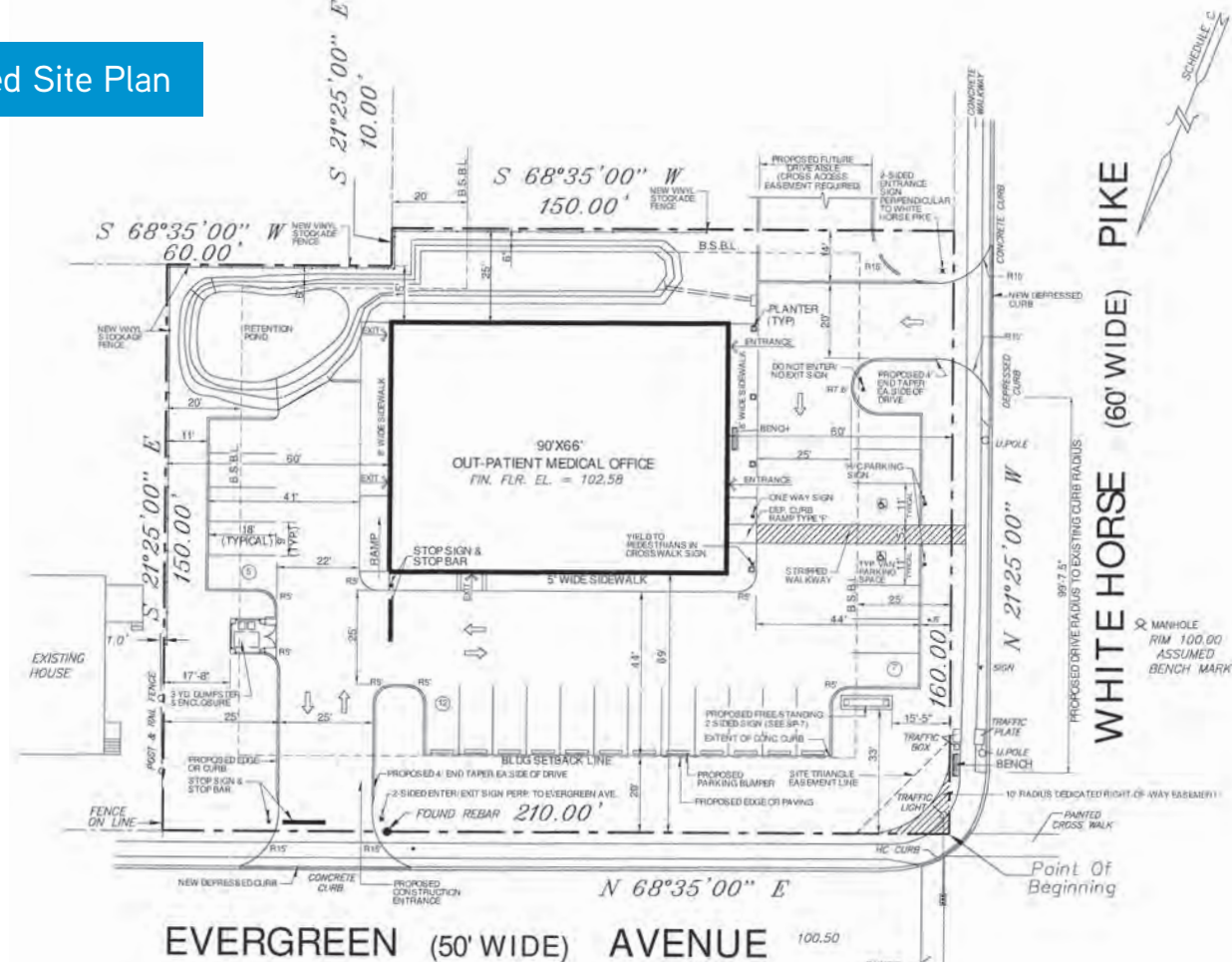
Demographics	1 Mile	3 Mile	5 Mile
Population	11,958	97,969	254,838
Households	4,601	38,700	101,182
Average HH Income	\$70,432	\$84,022	\$85,846

### COLLIERS INTERNATIONAL

1317 Route 73  
Suite 109  
Mount Laurel, NJ 08054  
+1 856 234 9300  
[www.colliers.com/mountlaurel](http://www.colliers.com/mountlaurel)



## Approved Site Plan



## Contact

TONY DIDIO, SIOR  
VICE PRESIDENT  
+1 609 820 5900  
[tony.didio@colliers.com](mailto:tony.didio@colliers.com)



COLLIERS INTERNATIONAL

1317 Route 73  
Suite 109  
Mount Laurel, NJ 08054  
+1 856 234 9300  
[www.colliers.com/mountlaurel](http://www.colliers.com/mountlaurel)



@ColliersSNJ



ColliersSNJ



[colliers.com/mountlaurel](http://colliers.com/mountlaurel)

The foregoing information was furnished to us by sources which we deem to be reliable, but no warranty or representation is made as to the accuracy thereof. Subject to correction of errors, omissions, change of price, prior sale or withdrawal from market without notice. The aerial image is intended to provide a general outline of the subject property. It is not a survey nor should it be relied upon for purposes of determining property lines or boundaries.