

**AVAILABLE
SUBLEASE**

KENDALL CENTER INDUSTRIAL

5555 W KENDALL ST | BOISE, ID



PROPERTY INFORMATION

Property Type:	Industrial
Zoning:	M-1D
Clear Height:	12' (warehouse)
Fire Suppression:	Sprinklered
Parking:	4 : 1,000
Power:	Ample
Heat/Cool:	Both
Doors:	1 — 10' x10' drive-in
Sublease Term:	Through 8/31/2022

SPACE AVAILABLE

Space	Size	Rate
Warehouse	1,555 SF	
Office	340 SF	
Total	1,895 SF	\$.84 Modified Gross

HIGHLIGHTS

- » 2 Private offices, balance warehouse
- » New office amenities
- » New lighting in warehouse
- » End unit, nice glass line
- » 2 restrooms

Demographics	1 Mile	3 Miles	5 Miles
Population Avg.	11,878	110,694	218,862
Income Avg.	\$49,998	\$60,177	\$72,470
Home Value	\$190,074	\$200,628	\$216,187

Colliers
INTERNATIONAL

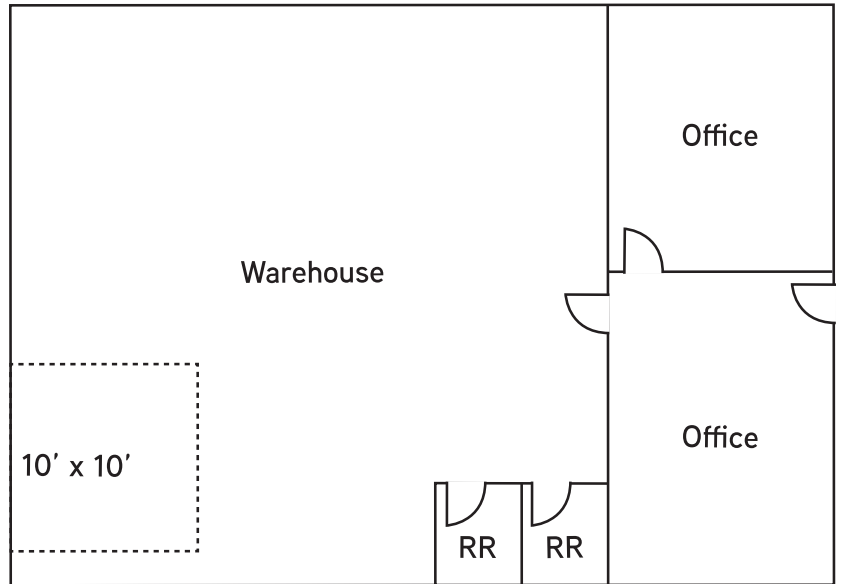
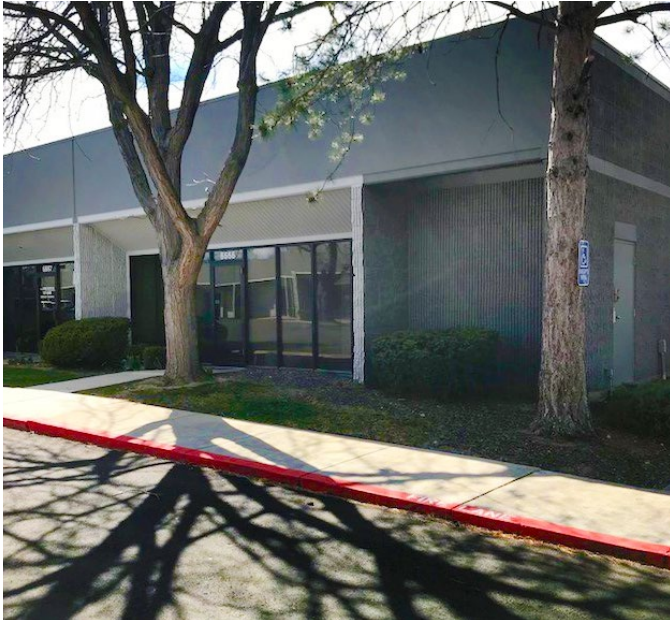
STEVE FOSTER
208 472 2834
steve.foster@colliers.com

MICHAEL MCNEIGHT
208 472 2865
michael.mcneight@colliers.com

**AVAILABLE
SUBLEASE**

KENDALL CENTER INDUSTRIAL

5555 W KENDALL ST | BOISE, ID



Floorplan is for informational purposes only and is not the result of survey, may not be to scale.



STEVE FOSTER
208 472 2834
steve.foster@colliers.com

MICHAEL MCNEIGHT
208 472 2865
michael.mcneight@colliers.com