

Land For Sale

5.5 Acres



28th Street & SE Midcities Drive, Bentonville | Arkansas

5.5 +/- acres available located on 28th Street and SE Midcities drive in Rogers, Arkansas. Located a half-mile from the Sam's Club headquarters and less than one mile to the new Walmart Global Headquarters and I-49.

Contact us:

Pat Morrison

Brokerage | Arkansas

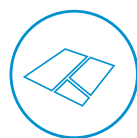
D: +1 479 845 1503

C: +1 479 936 4200

pat.morrison@colliers.com



FEATURES



5.5 +/- acres



Centrally located in Bentonville, one of the fastest growing MSAs in the country



2-minute drive to the new Walmart Global HQ



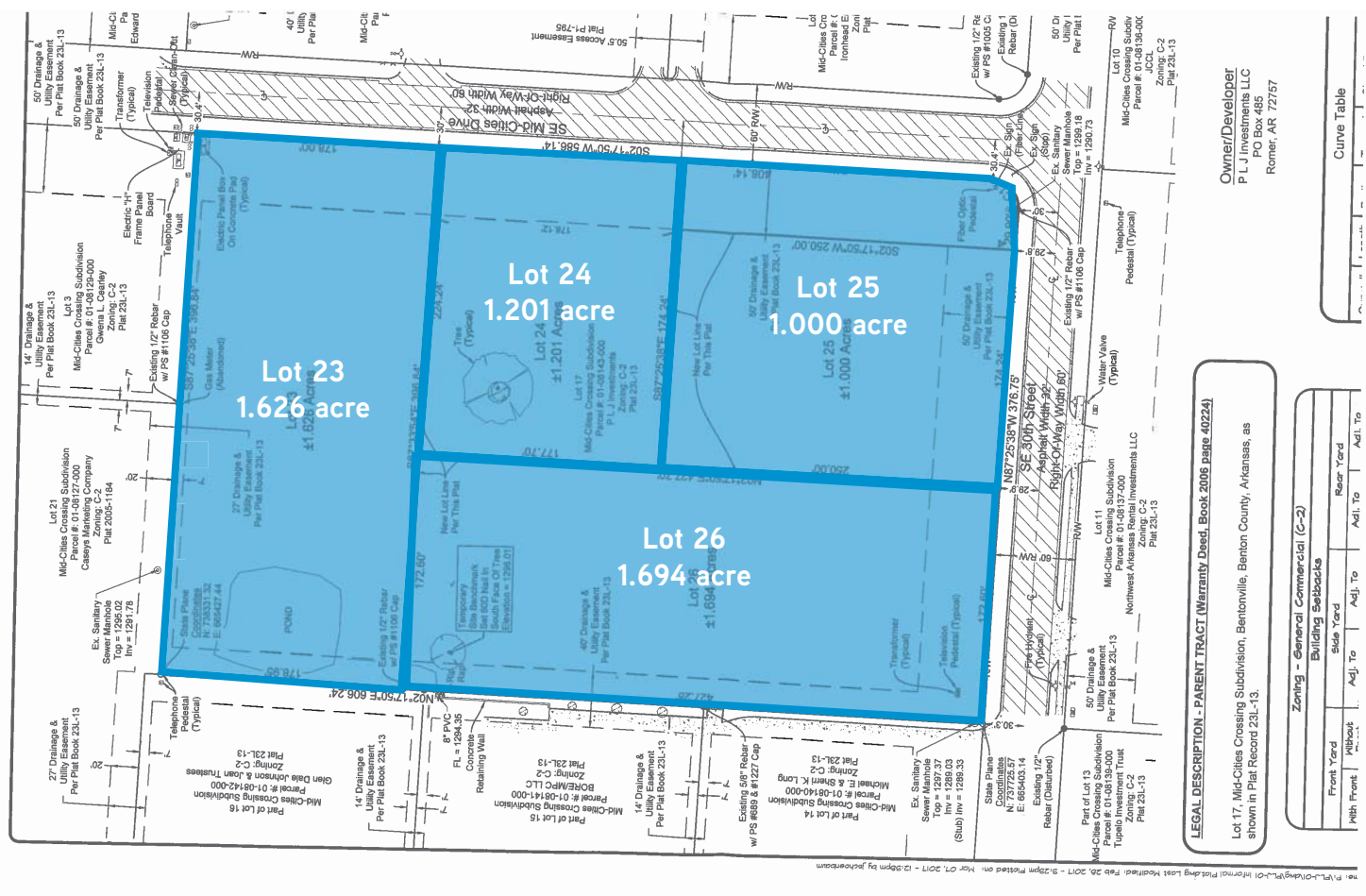
Zoned C-2 and ready for development



This document has been prepared by Colliers International for advertising and general information only. Colliers International makes no guarantees, representations or warranties of any kind, expressed or implied, regarding the information including, but not limited to, warranties of content, accuracy and reliability. Any interested party should undertake their own inquiries as to the accuracy of the information. Colliers International excludes unequivocally all inferred or implied terms, conditions and warranties arising out of this document and excludes all liability for loss and damages arising there from. This publication is the copyrighted property of Colliers International and/or its licensor(s). ©2017. All rights reserved.

Colliers International
4204 S. Pinnacle Hills Pkwy | Suite 102
Rogers, AR 72758
P: +1 479 636 9000
www.colliers.com

Site plan >



Lot #	Acreage	Price PSF	Price
23	1.626	\$6.46	\$457,556
24	1.201	\$6.66	\$348,480
25	1.000	\$8.00	\$348,480
26	1.694	\$6.36	\$469,308
Total	5.521	\$6.75	\$1,623,824

Contact us:

Pat Morrison

Brokerage | Arkansas

D: +1 479 845 1503

C: +1 479 936 4200

pat.morrison@colliers.com

Colliers International

4204 S. Pinnacle Hills Pkwy | Suite 102

Rogers, AR 72758

P: +1 479 636 9000

www.colliers.com





DEMOGRAPHICS >

	1 Mile	3 Miles	5 Miles
Est. Population 2017	3,591	49,484	110,451
Proj. Population 2023	3,824	55,933	125,486
Est. Households 2017	1,514	19,071	40,524
Proj. Households 2023	1,623	21,550	46,026
Avg. Est. Household Income 2017	\$58,256	\$88,431	\$90,250



Contact us:

Pat Morrison

Brokerage | Arkansas

D: +1 479 845 1503

C: +1 479 936 4200

pat.morrison@colliers.com

Colliers International
4204 S. Pinnacle Hills Pkwy | Suite 102
Rogers, AR 72758
P: +1 479 636 9000
www.colliers.com

