

FOR LEASE PROFESSIONAL OFFICE

333 PALMER DRIVE, BAKERSFIELD, CA



SCOTT WELLS
SENIOR VICE PRESIDENT | PRINCIPAL
CENTRAL CALIFORNIA
OFFICE PROPERTIES TEAM
DIR 661.631.3822
LICENSE NUMBER 01126196
scott.wells@colliers.com

DAVID A. WILLIAMS SIOR
SENIOR VICE PRESIDENT | PRINCIPAL
CENTRAL CALIFORNIA
OFFICE PROPERTIES TEAM
DIR 661.631.3816
LICENSE NUMBER 00855489
david.a.williams@colliers.com

COLLIERS INTERNATIONAL
10000 Stockdale Highway, Suite 102
Bakersfield, CA 93311
www.colliers.com/bakersfield



FOR LEASE

PROFESSIONAL OFFICE SUITES

PROPERTY INFORMATION

333 PALMER DRIVE, BAKERSFIELD, CA

PROPERTY LOCATION:

The building is located in Southwest Bakersfield near New Stine Road and south of Stockdale Highway.

AVAILABLE FOR LEASE:

SUITE 220.....1,045 s.f.....\$1.45/s.f. ++ (Plus Utilities & Janitorial)

SUITE 300*1,704-2,519 s.f.. ...\$1.45/s.f. ++ (Plus Utilities & Janitorial)

SUITE 310*1,146 s.f..... \$1.45/s.f. ++ (Plus Utilities & Janitorial)

* SUITES 300 & 310 may be combined for up to a total of 3,665 s.f.

DESCRIPTION / HIGHLIGHTS:

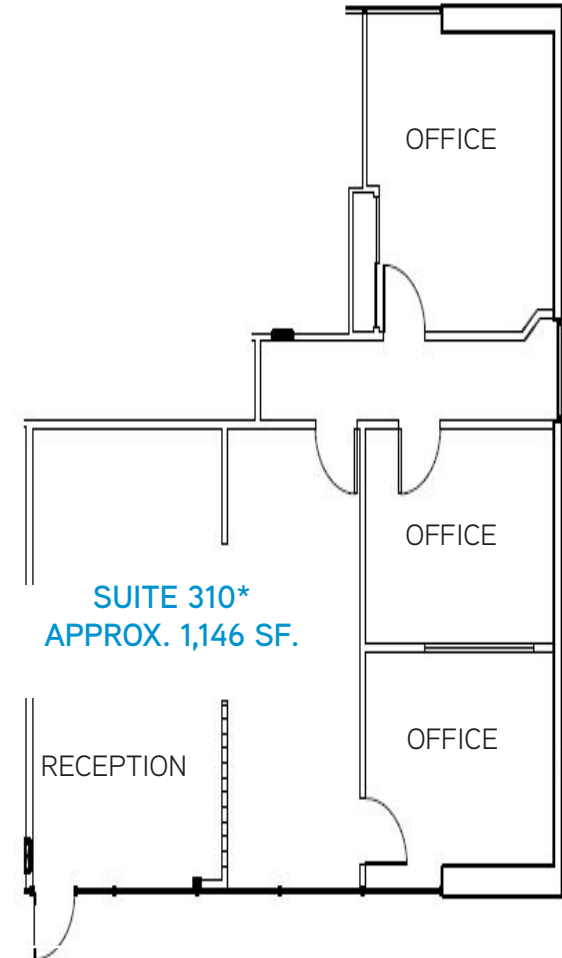
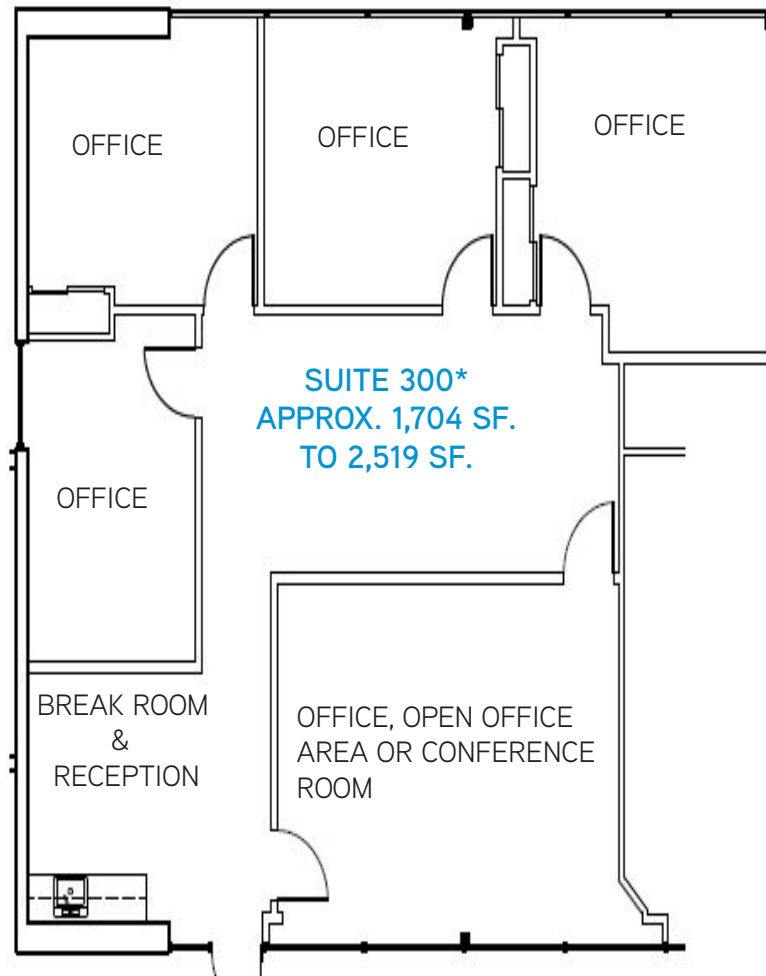
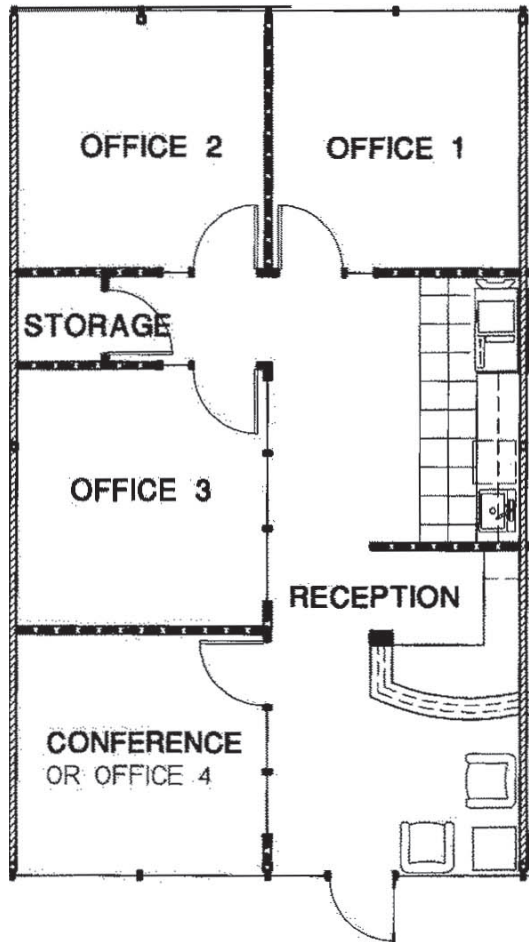
- › EXCELLENT LOCATION NEAR THE CALIFORNIA AVENUE BUSINESS CORRIDOR
- › EASY ACCESS TO HIGHWAY 99 AND HIGHWAY 58
- › ABUNDANT PARKING
- › COVERED AND SECURE PARKING
- › MONUMENT SIGNAGE



FOR LEASE PROFESSIONAL OFFICE SUITES FLOOR PLANS

333 PALMER DRIVE, BAKERSFIELD, CA

SUITE 220
APPROX. 1,045

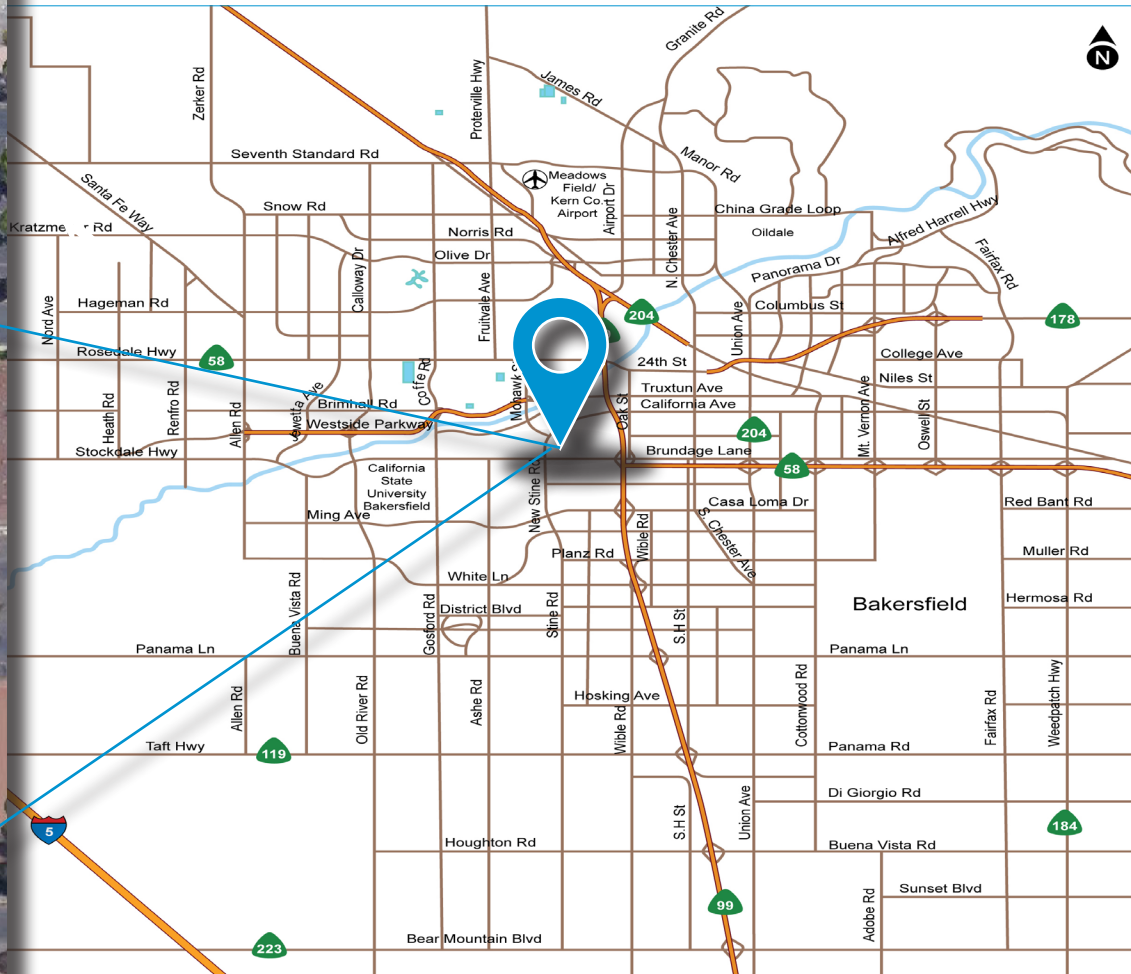


*SUITES 300 & 310 MAY BE COMBINED
FOR UP TO A TOTAL OF 3,665 S.F.

FLOOR PLANS NOT TO SCALE

FOR LEASE PROFESSIONAL OFFICE SUITES AERIAL MAP & LOCATION MAP

333 PALMER DRIVE, BAKERSFIELD, CA



CONTACT US

DAVID A. WILLIAMS SIOR
SENIOR VICE PRESIDENT | PRINCIPAL
CENTRAL CALIFORNIA
OFFICE PROPERTIES TEAM
661.631.3816
LICENSE NUMBER 00855489
david.a.williams@colliers.com

SCOTT WELLS
SENIOR VICE PRESIDENT | PRINCIPAL
CENTRAL CALIFORNIA
OFFICE PROPERTIES TEAM
661.631.3822
LICENSE NUMBER 01126196
scott.wells@colliers.com

COLLIERS INTERNATIONAL
10000 Stockdale Highway
Suite 102
Bakersfield, CA 93311
www.colliers.com/bakersfield

