



# PHILADELPHIA MARKETPLACE

101-163 FRANKLIN MILLS BOULEVARD | PHILADELPHIA, PA 19154



COLLIERS INTERNATIONAL  
Ten Penn Center  
1801 Market Street, Suite 500  
Philadelphia, PA 19103  
[www.colliers.com/philadelphia](http://www.colliers.com/philadelphia)



@ColliersPhilly



Colliers Philly



[colliers.com/philadelphia](http://colliers.com/philadelphia)





## Property Features

- › Located directly across from Franklin/Philadelphia Mills Mall
- › Strong area demographics
- › 18,498 ADT on Knights Road and 64,878 ADT on Woodhaven Road
- › Pad site available
- › Located just minutes from I-95 and Roosevelt Boulevard

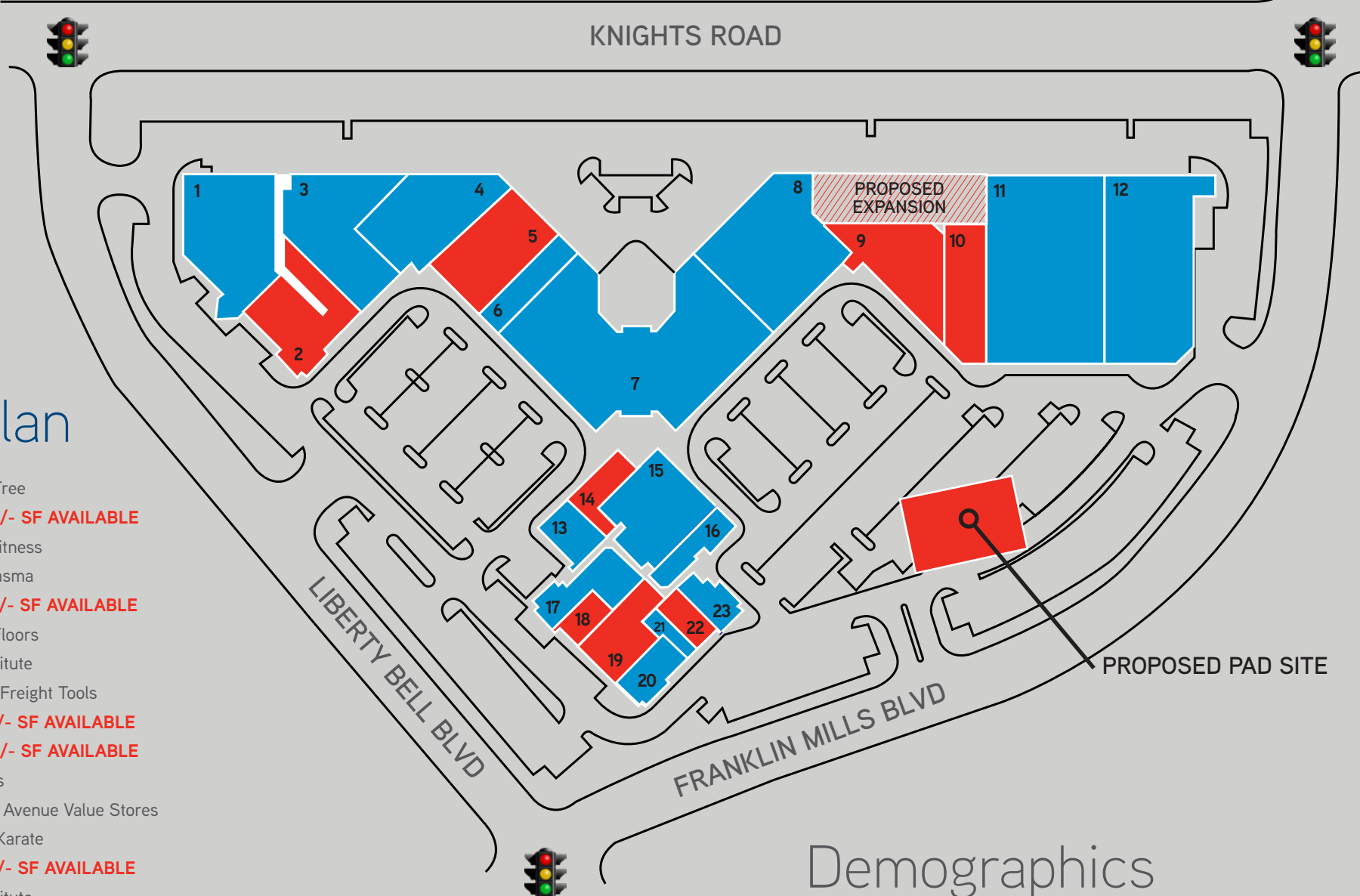
## NEIGHBORING TENANTS INCLUDE...



The foregoing information was furnished to us by sources which we deem to be reliable, but no warranty or representation is made as to the accuracy thereof. Subject to correction of errors, omissions, change of price, prior sale or withdrawal from market without notice. The aerial image is intended to provide a general outline of the subject property. It is not a survey nor should it be relied upon for purposes of determining property lines or boundaries.

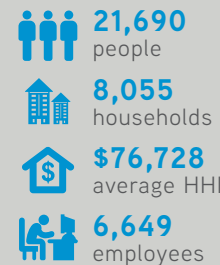
# Site Plan

1. Dollar Tree
2. **11,375+/- SF AVAILABLE**
3. Retro Fitness
4. CSL Plasma
5. **8,080+/- SF AVAILABLE**
6. Magic Floors
7. Chi Institute
8. Harbor Freight Tools
9. **9,865+/- SF AVAILABLE**
10. **8,000+/- SF AVAILABLE**
11. Big Lots
12. Second Avenue Value Stores
13. Action Karate
14. **3,470+/- SF AVAILABLE**
15. Chi Institute
16. U.S. Coast Guard
17. Citizens Bank
18. **1,848+/- SF AVAILABLE**
19. **3,530+/- SF AVAILABLE**
20. Beer Outlet
21. Nails
22. **1,914+/- SF AVAILABLE**
23. Dental School

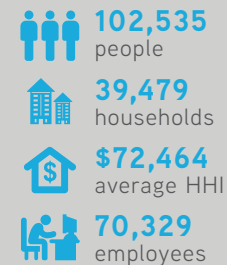


## Demographics

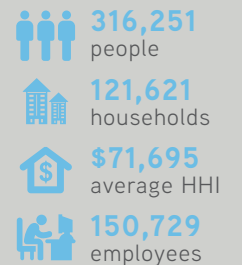
### WITHIN 1 MILE



### WITHIN 3 MILES



### WITHIN 5 MILES







**Philadelphia Mills**  
Average Small Shops Sales: \$320 PSF  
Average Visitors: 13 Million







## CONTACT US:

TODD SUSSMAN  
SENIOR VICE PRESIDENT  
+1 215 928 7575  
todd.sussman@colliers.com

JOSH GOLDFINE  
VICE PRESIDENT  
+1 215 928 7565  
josh.goldfine@colliers.com

COLLIERS INTERNATIONAL  
Ten Penn Center  
1801 Market Street, Suite 500  
Philadelphia, PA 19103  
[www.colliers.com/philadelphia](http://www.colliers.com/philadelphia)



@ColliersPhilly



Colliers Philly



[colliers.com/philadelphia](http://colliers.com/philadelphia)