

Water's Edge Plaza



FOR LEASE

4401 South Orange Ave.
Orlando, FL 32806

ROBERT KELLOGG, CCIM
407 362 6163
robert.kellogg@colliers.com

A. TODD DAVIS, SIOR, CCIM
407 362 6121
todd.davis@colliers.com

COLIN MORRISON
407 362 6153
colin.morrison@colliers.com



Key Features

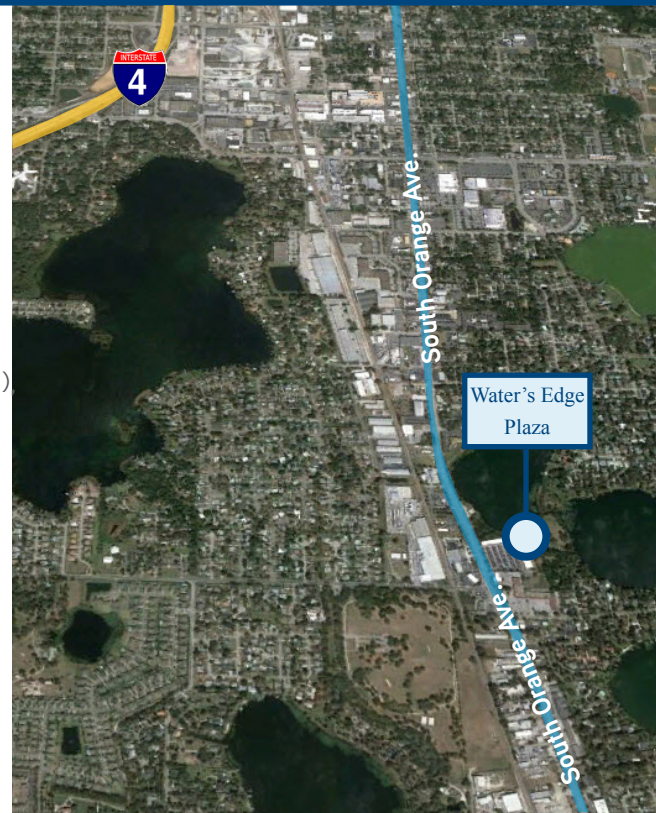
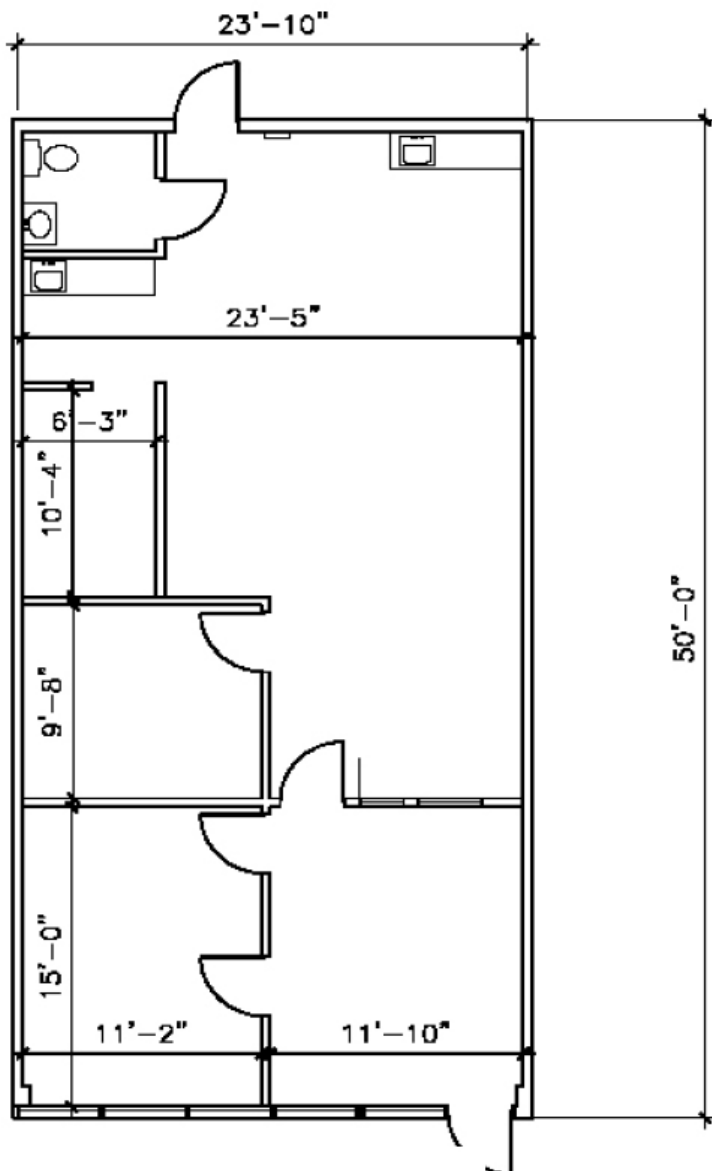
- › Available: 1,200 SF
- › 47,000 SF, single story office/medical building
- › Mix of professional office and medical tenants
- › Ample parking (6.75 per 1,000 SF parking ratio)
- › On-site deli cafe and surrounding retail

FOR LEASE > Water's Edge Plaza

Key Features

- > 24/7 access
- > Ideal for family practice, medical or professional office use
- > Optimal location with easy access to I-4, SR 408 (East-West Expressway), SR 528 (Beachline) and Downtown Orlando
- > Strategically located less than two miles from Orlando Regional Hospital (S. Orange Campus)
- > Building signage opportunities available
- > Lease Rate: \$16.50/SF NNN

Floor Plan > Suite 107 - 1,200 SF



Contact Us

ROBERT KELLOGG, CCIM
407 362 6163
robert.kellogg@colliers.com

A. TODD DAVIS
407 362 6121
todd.davis@colliers.com

COLIN MORRISON
407 362 6153
colin.morrison@colliers.com

This document/email has been prepared by Colliers International for advertising and general information only. Colliers International makes no guarantees, representations or warranties of any kind, expressed or implied, regarding the information including, but not limited to, warranties of content, accuracy and reliability. Any interested party should undertake their own inquiries as to the accuracy of the information. Colliers International excludes unequivocally all inferred or implied terms, conditions and warranties arising out of this document and excludes all liability for loss and damages arising there from. This publication is the copyrighted property of Colliers International and /or its licensor(s). © 2016. All rights reserved. This communication is not intended to cause or induce breach of an existing listing agreement.



COLLIERS INTERNATIONAL
255 South Orange Avenue
Suite 1300
Orlando, FL 32801
www.colliers.com