



1,800 SF
For Lease

Natalie Hucke

Senior Vice President
+1 757 217 1882
natalie.hucke@colliers.com

Kevin O'Keefe

Senior Vice President
+1 757 217 1885
kevin.okeefe@colliers.com

2947 South Military Highway, Chesapeake, VA 23323

Arch Plaza

Great visibility on Military Highway in the Deep Creek submarket of Chesapeake

- 1,800 sf available - can be subdivided
- Located within close proximity to Interstate 64 & Interstate 664

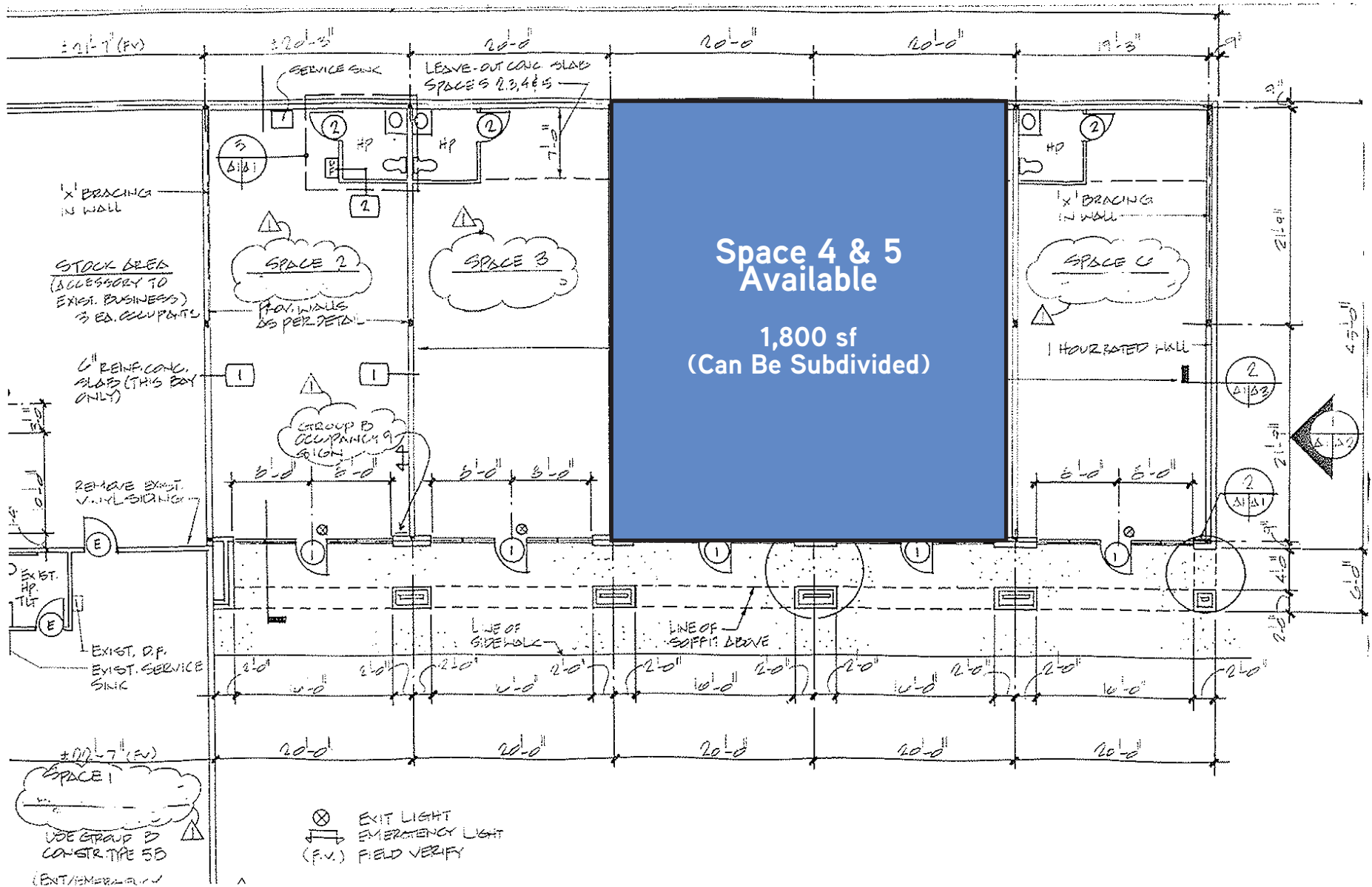
Accelerating success.

Colliers

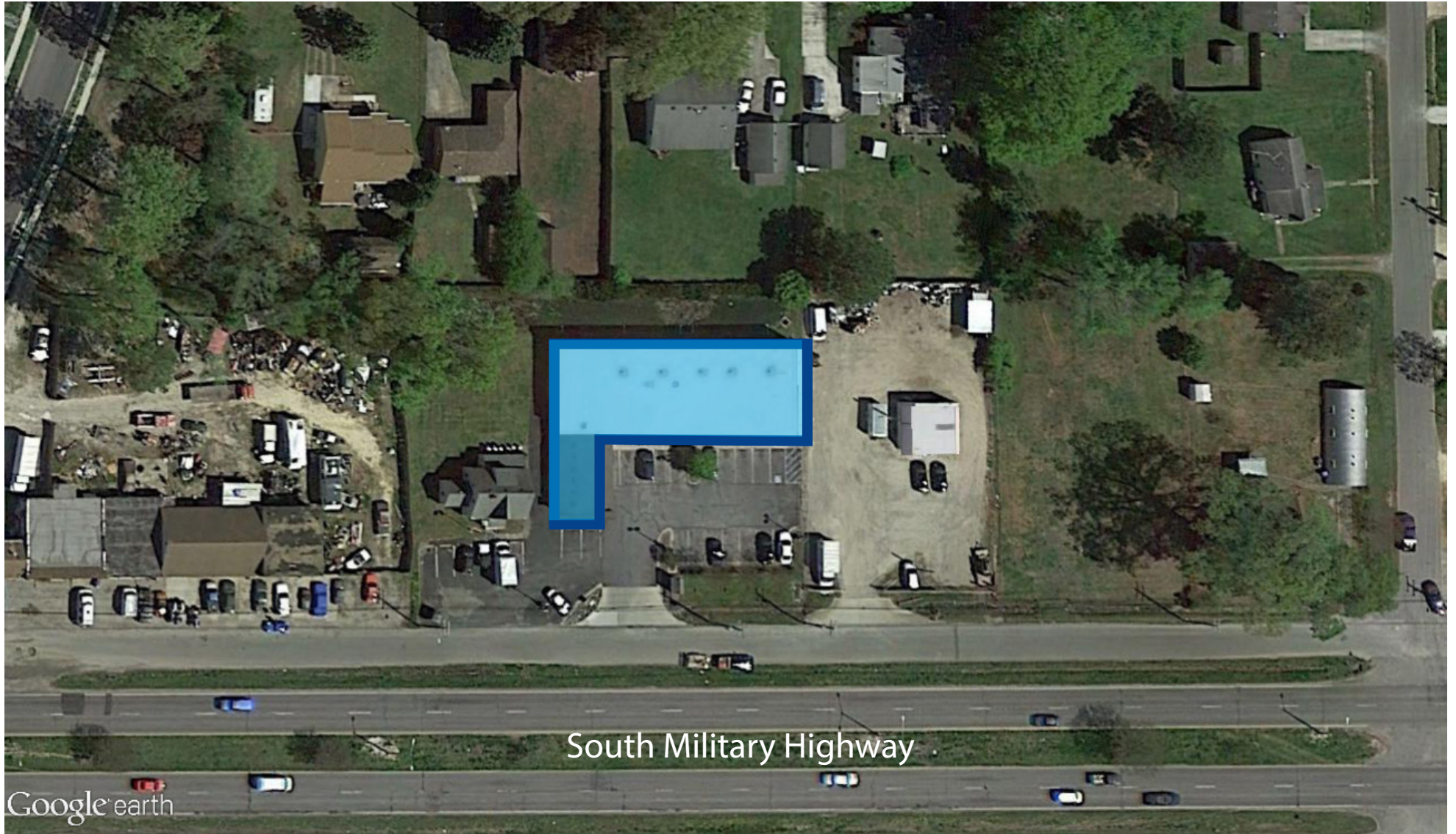
150 West Main Street
Suite 1100
Norfolk, VA 23510
Main: +1 757 490 3300
colliers.com



Site Plan



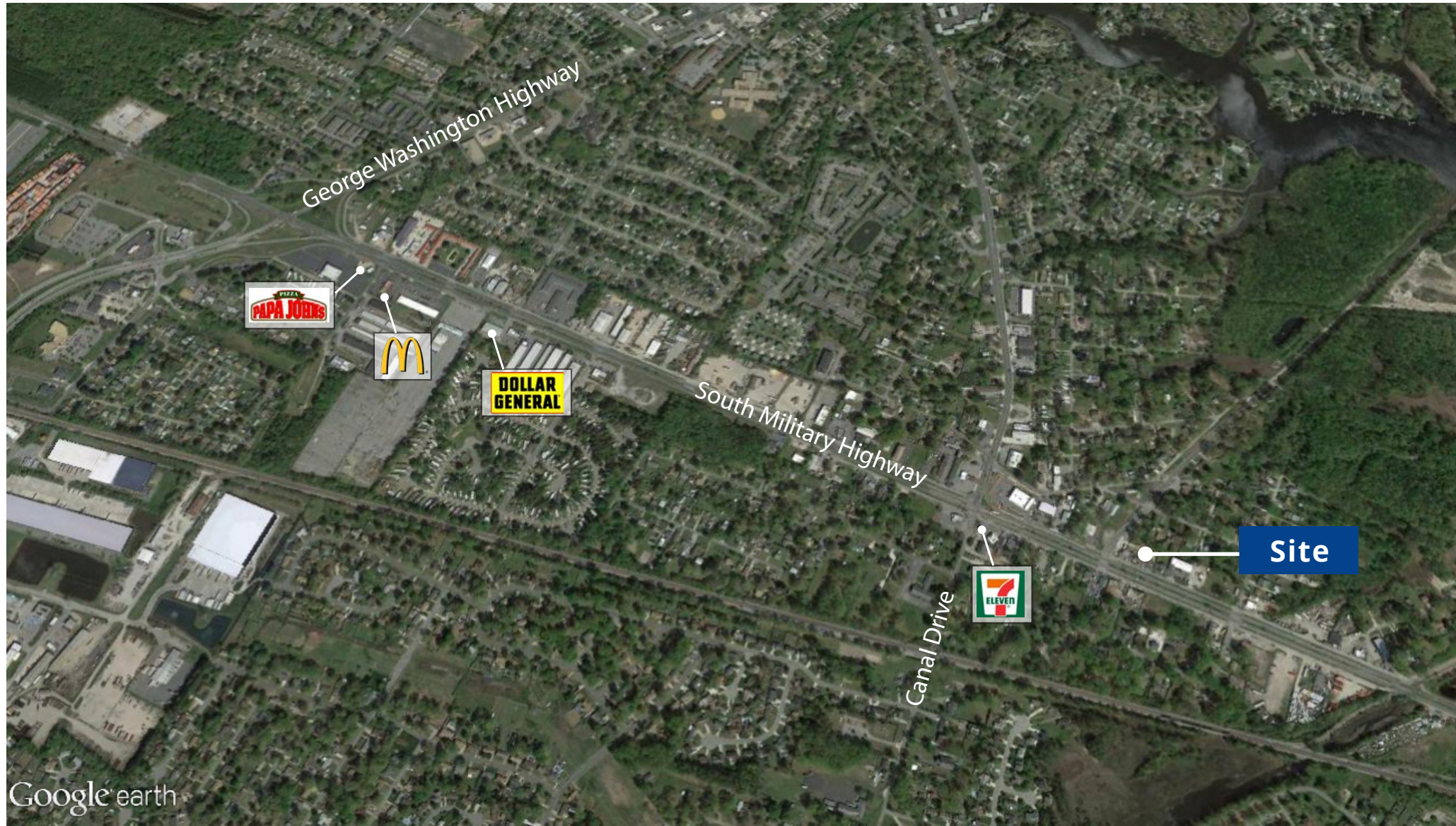
Aerial View



South Military Highway

Google earth

Aerial View





Colliers

Natalie Hucke

Senior Vice President
+1 757 217 1882
natalie.hucke@colliers.com

Kevin O'Keefe

Senior Vice President
+1 757 217 1885
kevin.okeefe@colliers.com

Colliers

150 West Main Street
Suite 1100
Norfolk, VA 23510
Main: +1 757 490 3300
colliers.com

This document/email has been prepared by Colliers for advertising and general information only. Colliers makes no guarantees, representations or warranties of any kind, expressed or implied, regarding the information including, but not limited to, warranties of content, accuracy and reliability. Any interested party should undertake their own inquiries as to the accuracy of the information. Colliers excludes unequivocally all inferred or implied terms, conditions and warranties arising out of this document and excludes all liability for loss and damages arising there from. This publication is the copyrighted property of Colliers and /or its licensor(s). © 2024. All rights reserved. This communication is not intended to cause or induce breach of an existing listing agreement. Colliers International Virginia, LLC



colliers.com

Accelerating success.