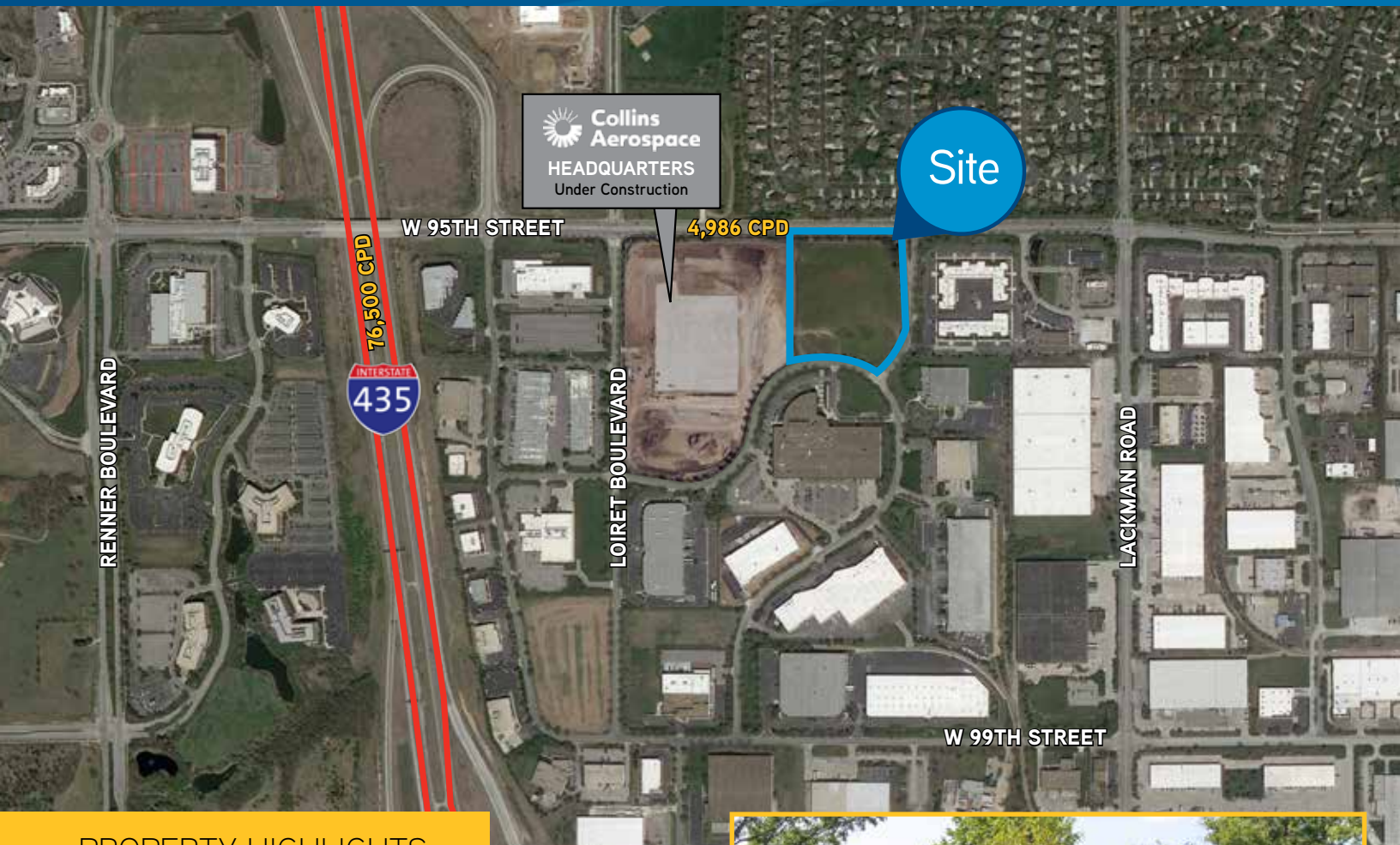


FOR SALE > INDUSTRIAL/FLEX LAND

KANSAS COMMERCE CENTER LOT 4

LENEXA, KS



PROPERTY HIGHLIGHTS

- > Land area: 8.11± acres
- > Location: Kansas Commerce Center
- > Visibility: frontage to W 95th Street has a count of 4,986 CPD
- > Interstate access: via W 95th Street and I-435
- > Zoning: BP1
- > Development-ready condition
- > Sale price: \$2,115,000



JOHN STAFFORD sior
+1 816 556 1184
KANSAS CITY, MO
john.stafford@colliers.com

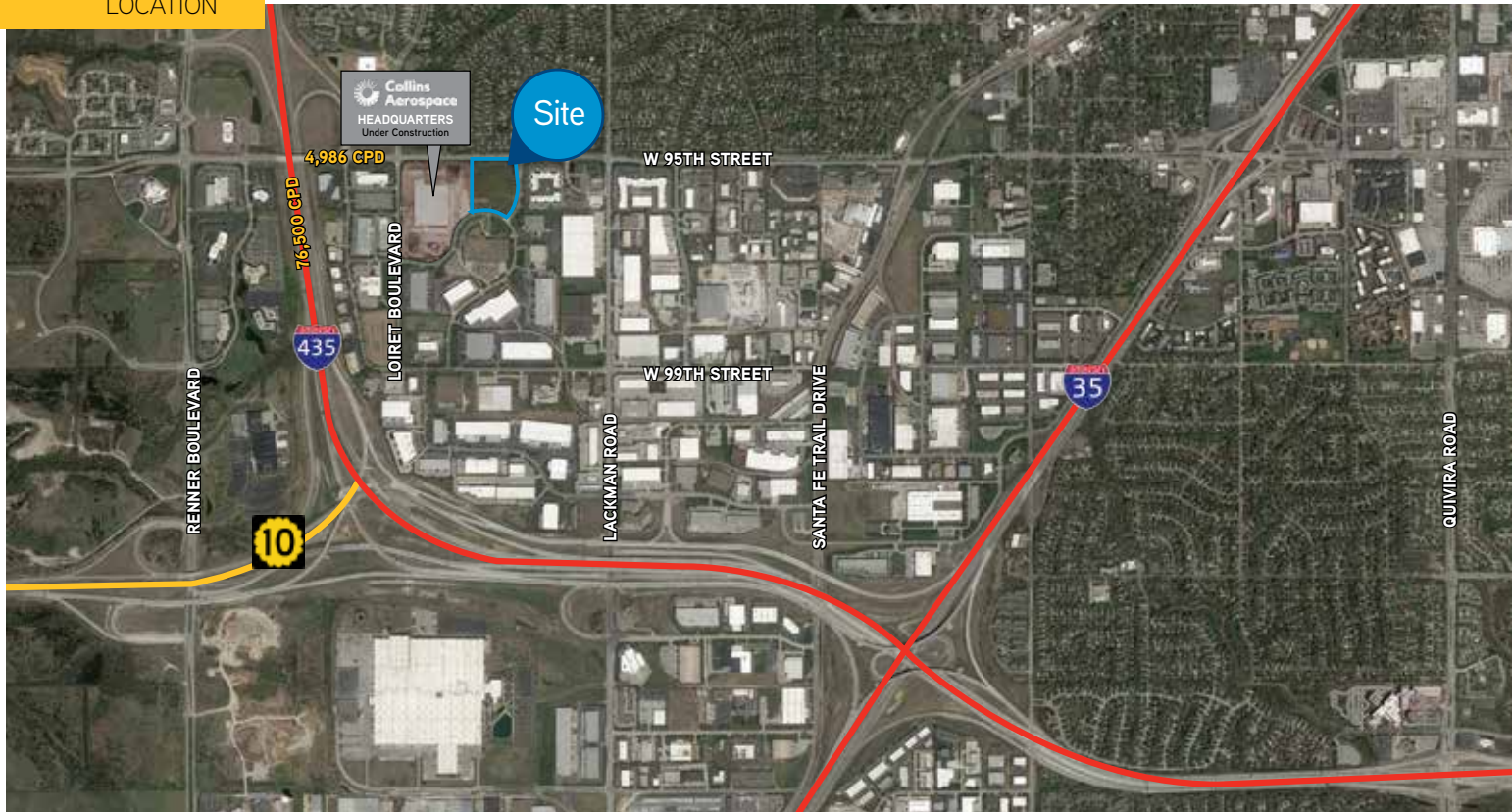


FOR SALE > INDUSTRIAL/FLEX LAND

KANSAS COMMERCIAL CENTER LOT 4

LENEXA, KS

LOCATION



CONTACT

JOHN STAFFORD sior
+1 816 556 1184
KANSAS CITY, MO
john.stafford@colliers.com

COLLIERS INTERNATIONAL
4520 Main Street, Suite 1000
Kansas City, Missouri

This document has been prepared by Colliers International for advertising and general information only. Colliers International makes no guarantees, representations or warranties of any kind, expressed or implied, regarding the information including, but not limited to, warranties of content, accuracy and reliability. Any interested party should undertake their own inquiries as to the accuracy of the information. Colliers International excludes unequivocally all inferred or implied terms, conditions and warranties arising out of this document and excludes all liability for loss and damages arising there from. This publication is the copyrighted property of Colliers International and/or its licensor(s). ©2020. All rights reserved.

