

FOR LEASE > OFFICE SPACE



4550 Bellevue Avenue

KANSAS CITY, MISSOURI



Building Features

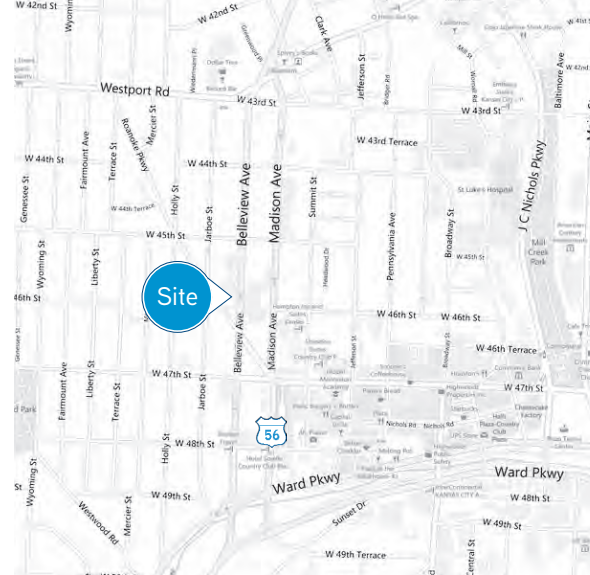
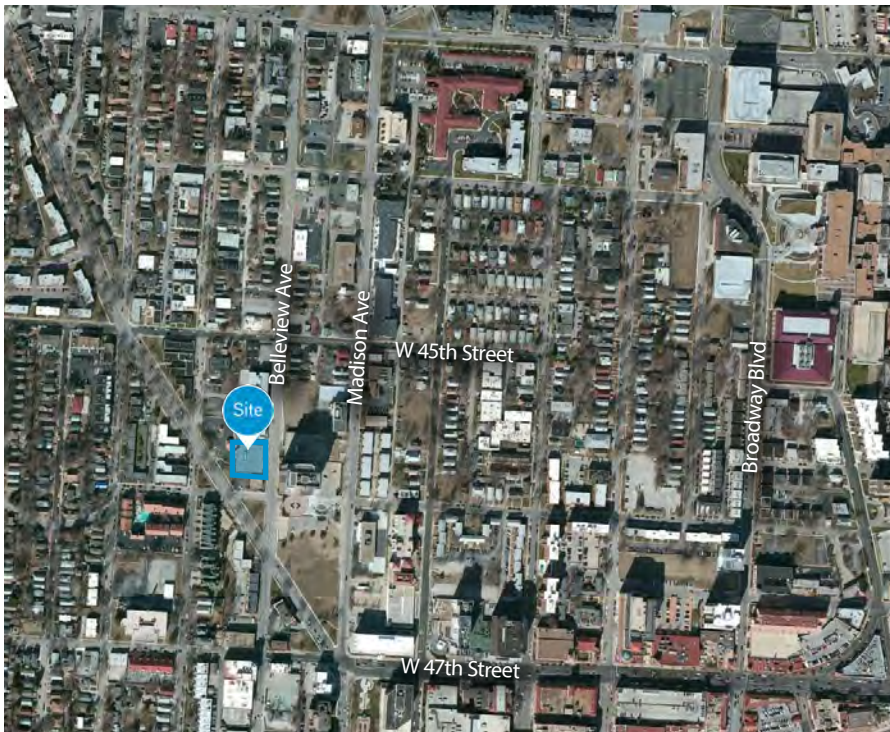
- > Up to 12,643 RSF of office space available
- > Former law firm office
- > Parking: Approximately 3 / 1,000 free surface parking
- > Covered visitor parking available
- > Exterior signage opportunity for 12,643 RSF user
- > Great visibility, location, easy access, and just minutes from The Country Club Plaza & downtown
- > For lease: \$19.50 - \$22.50 / RSF, full service

AGENT: PHIL JAMES
+1 816 556 1125
KANSAS CITY, MO
phil.james@colliers.com

AGENT: ROSS SIMPSON
+1 816 556 1157
KANSAS CITY, MO
ross.simpson@colliers.com

COLLIERS INTERNATIONAL
4520 Main Street, Suite 1000
Kansas City, MO 64111
www.colliers.com

4550 Bellevue Avenue > Aerials



Contact Us

AGENT: PHIL JAMES

+1 816 556 1125

KANSAS CITY, MO

phil.james@colliers.com

AGENT: ROSS SIMPSON

+1 816 556 1157

KANSAS CITY, MO

ross.simpson@colliers.com

COLLIERS INTERNATIONAL
4520 Main Street, Suite 1000
Kansas City, MO 64111

www.colliers.com

This document has been prepared by Colliers International for advertising and general information only. Colliers International makes no guarantees, representations or warranties of any kind, expressed or implied, regarding the information including, but not limited to, warranties of content, accuracy and reliability. Any interested party should undertake their own inquiries as to the accuracy of the information. Colliers International excludes unequivocally all inferred or implied terms, conditions and warranties arising out of this document and excludes all liability for loss and damages arising there from. This publication is the copyrighted property of Colliers International and/or its licensor(s). ©2015. All rights reserved.

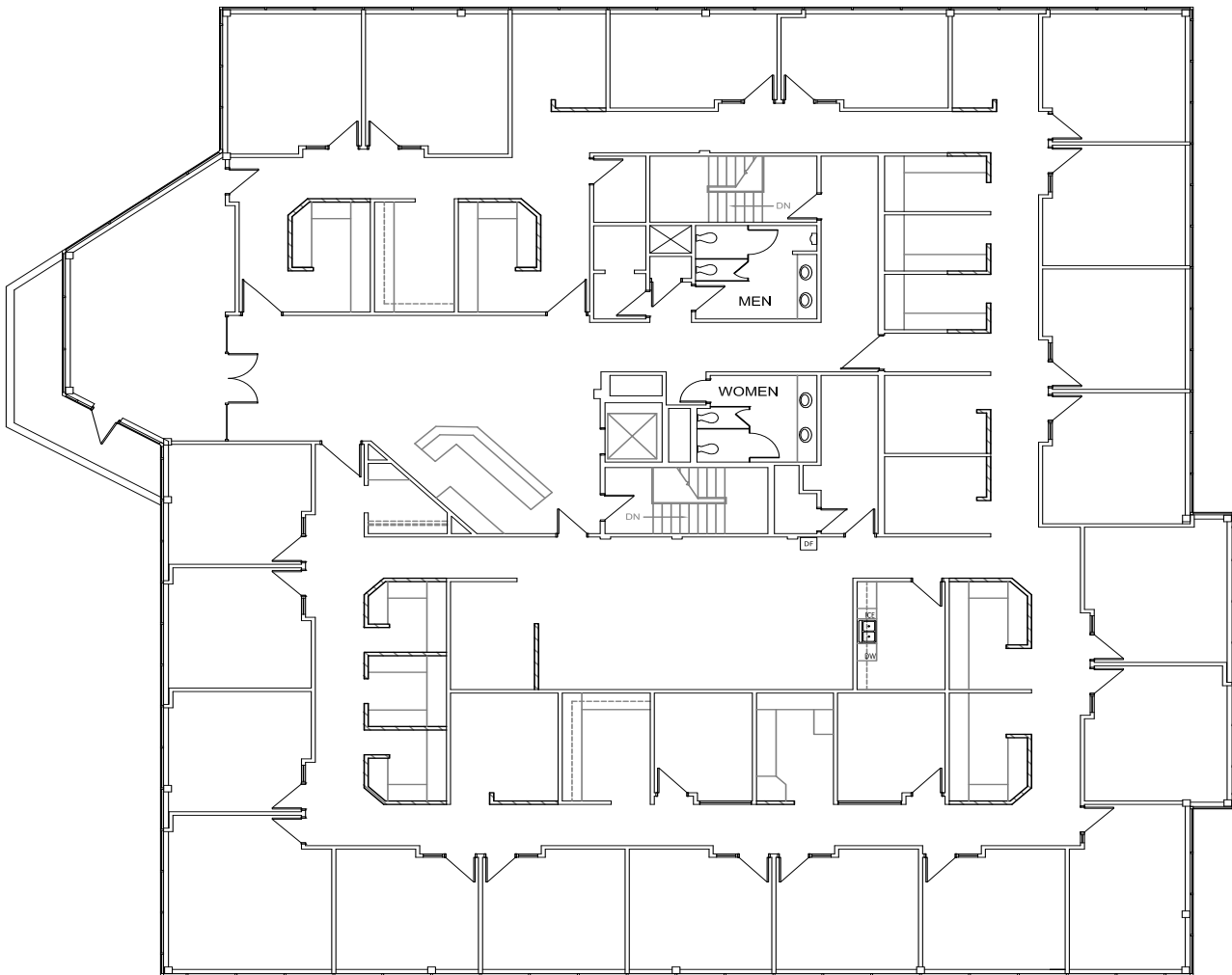


FOR LEASE > OFFICE SPACE

4550 Belleview Avenue

KANSAS CITY, MISSOURI

FLOOR PLAN



AGENT: PHIL JAMES
+1 816 556 1125
KANSAS CITY, MO
phil.james@colliers.com

AGENT: ROSS SIMPSON
+1 816 556 1157
KANSAS CITY, MO
ross.simpson@colliers.com

