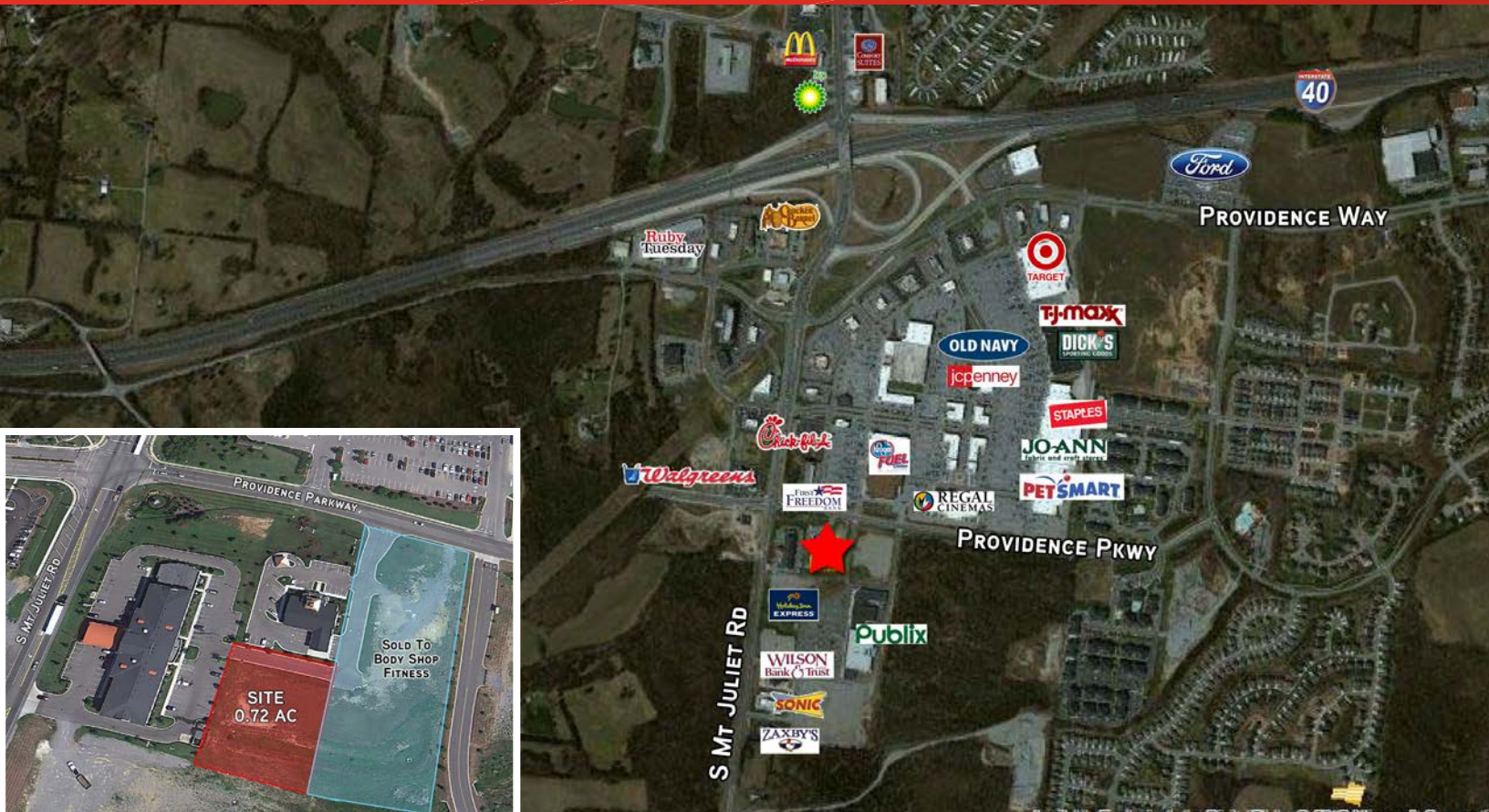


FOR SALE OR BUILD-TO-SUIT > COMMERCIAL LAND

# Providence Parkway

2800 PROVIDENCE PARKWAY, MT. JULIET, TN 37122



*Prime Location! Pad-ready vacant parcel located in the center of rapidly growing Mt. Juliet, near the Providence and Delweb communities.*

## Site Details

- > 0.72 AC site
- > High growth area
- > New Walmart and Lowes development located north of the I-40 interchange
- > Across the street from Providence Marketplace and Kroger
- > Great location for a restaurant, office or retail center
- > Near the proposed Providence Central Development for office and multifamily
- > Adjacent to the new Holiday Inn, First Freedom Bank, Providence Commons Shopping Center, Publix, Zaxby's, Sonic, Johnathon's Grill, and McDonalds

**Sale Price: \$18.00/SF**

AGENT: SOHAILA WILLIS CCIM  
DIR: 615 850 2757  
NASHVILLE, TN  
sohaila.willis@colliers.com

COLLIERS INTERNATIONAL  
523 3rd Avenue South  
Nashville, TN 37210  
615 850 2700  
www.colliers.com

## Quick Facts

### Mt. Juliet, TN



- Mt. Juliet city limits boasts a population close to 30,000 in 2010
- Wilson County is one of the top 5 most affluent counties in Tennessee and 2nd highest median income in the state
- For the fifth year in a row, Mt. Juliet was named as one of Tennessee's top 5 *Most Business Friendly Cities* and in 2011 was rated **Number 1!**

## Demographics

	3 MILES	5 MILES	7 MILES
POPULATION	15,313	47,707	96,344
2015 EST POPULATION	18,101	54,785	107,156
AVG HH INCOME	\$82,705	\$83,153	\$77,386

AVERAGE DAILY TRAFFIC COUNT: 24,665 VPD



The information contained herein has been given to us by the owner of the property or other sources we deem reliable. We have no reason to doubt its accuracy, but we do not guarantee it. All information should be verified prior to purchase or lease.

AGENT: SOHAILA WILLIS CCIM  
DIR: 615 850 2757  
NASHVILLE, TN  
sohaila.willis@colliers.com

COLLIERS INTERNATIONAL  
523 3rd Avenue South  
Nashville, TN 37210  
615 850 2700  
www.colliers.com