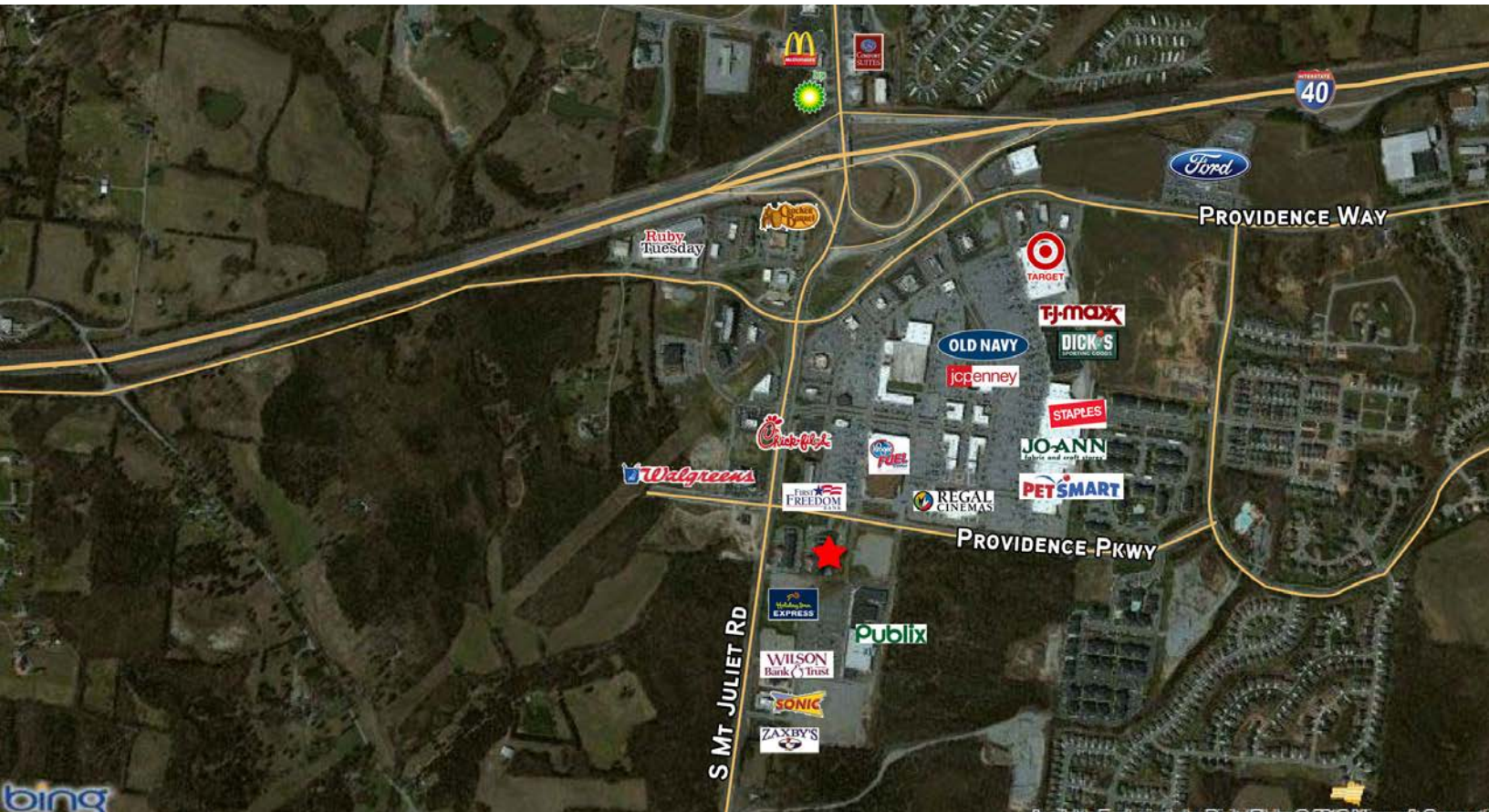


Providence Parkway



Prime Location! Pad-ready vacant parcel located in the center of rapidly growing Mt. Juliet, near the Providence and Delweb communities.

Site Details

- > 0.72 AC site
- > High growth area
- > New Walmart and Lowes development located north of the I-40 interchange
- > Across the street from Providence Marketplace and Kroger
- > Great location for a restaurant, office or retail center
- > Near the proposed Providence Central Development for office and multifamily
- > Adjacent to the new Holiday Inn, First Freedom Bank, Providence Commons Shopping Center, Publix, Zaxby's, Sonic, Johnathon's Grill, and McDonalds

Sale Price: \$18.00/SF



AGENT: SOHAILA WILLIS CCIM
DIR: 615 850 2757
NASHVILLE, TN
sohaila.willis@colliers.com

COLLIERS INTERNATIONAL
615 3rd Avenue South, Suite 500
Nashville, TN 37210
615 850 2700
www.colliers.com

Providence Parkway

2800 Providence Parkway, Mt. Juliet, TN 37122



Quick Facts

- Mt. Juliet city limits boasts a population close to 30,000 in 2015
- Wilson County is one of the top 5 most affluent counties in Tennessee and 2nd highest median income in the state
- For the fifth year in a row, Mt. Juliet was named as one of Tennessee's top 5 *Most Business Friendly Cities* and in 2011 was rated **Number 1!**

Demographics (2015)

	3 Miles	5 Miles	7 Miles
Population	18,891	55,529	102,353
2020 Projected Population	20,483	59,928	110,817
Projected Annual Growth 2015 - 2020	1.7%	1.6%	1.7%
Avg HH Income	\$77,414	\$81,579	\$75,454
Traffic Count	17,557 ADT on S Mt. Juliet Road @ Providence Place		

The information contained herein has been given to us by the owner of the property or other sources we deem reliable. We have no reason to doubt its accuracy, but we do not guarantee it. All information should be verified prior to purchase or lease.

AGENT: SOHAILA WILLIS CCIM
DIR: 615 850 2757
NASHVILLE, TN
sohaila.willis@colliers.com

COLLIERS INTERNATIONAL
615 3rd Avenue South, Suite 500
Nashville, TN 37210
615 850 2700
www.colliers.com