

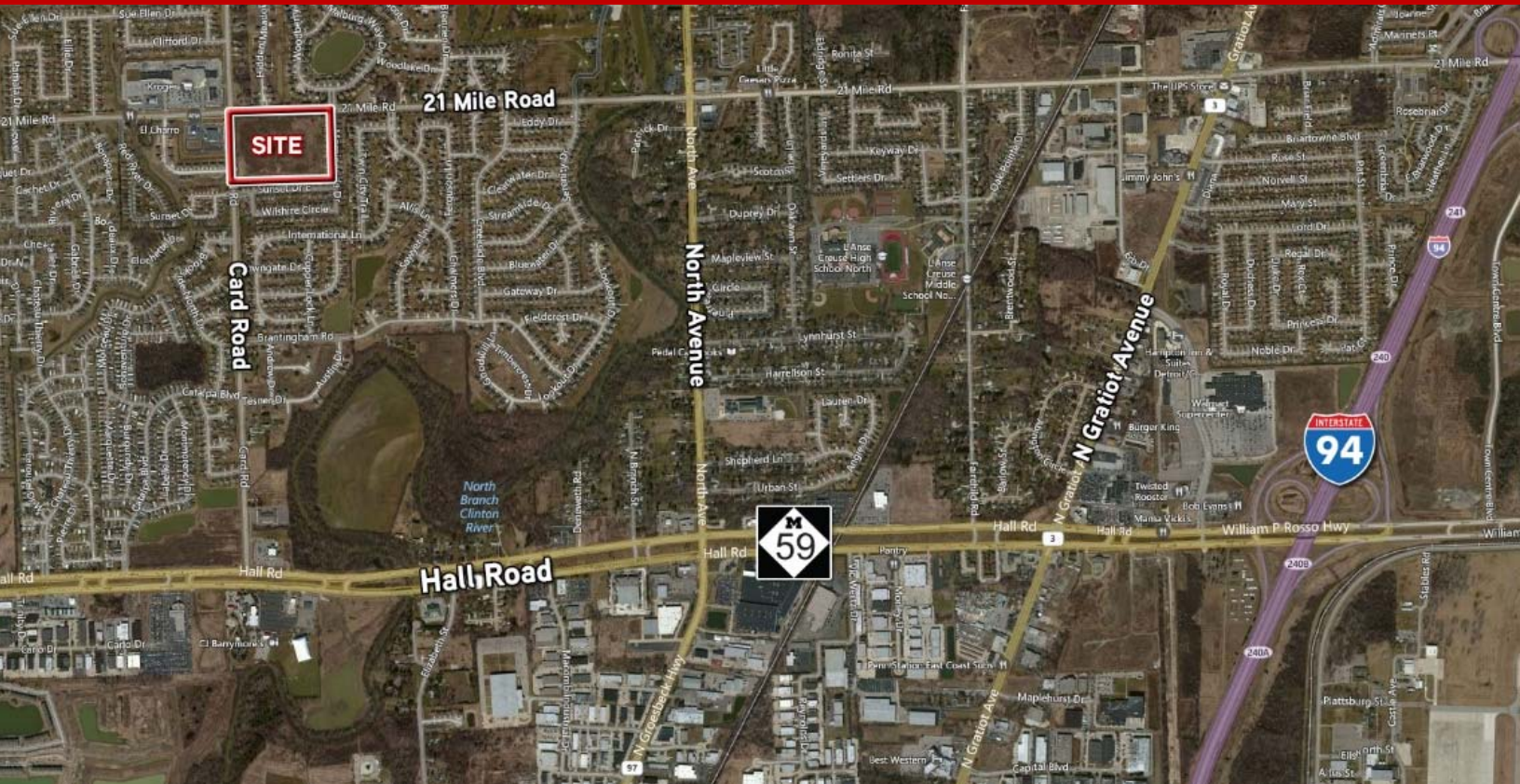
LAND FOR SALE >

19 Acres – Zoned C-3

21 MILE ROAD AND CARD ROAD, MACOMB TOWNSHIP, MICHIGAN



PRICE REDUCED



Property Amenities

- > 19 Acres
- > \$3,900,000.00 (\$205,263.15/Acre)
- > 2015 Summer Taxes - \$5,226.44
- > 2015 Winter Taxes - \$806.88
- > Zoned C-3 (Commercial [Shopping Center] District)
- > Ideal Re-Development Opportunity
- > Excellent Access to I-94 and M-59
- > Traffic Counts:
 - 21 Mile Road – 18,000 VPD
 - Card Road – 14,000 VPD
- > Estimated 2015 Population:
 - 5 Mile Radius – 181,763

PETER E. KEPIC, SIOR
248 540 1000 | Ext 1840
Southfield, MI 48076
peter.kepic@colliers.com

PETER J. KEPIC, SIOR
248 540 1000 | Ext 1842
Southfield, MI 48076
peter.j.kepic@colliers.com

COLLIERS INTERNATIONAL
2 Corporate Drive, Suite 300
Southfield, MI 48076
www.colliers.com

Colliers International has prepared this document/email for advertising or general information only. Information contained herein has been obtained from the owners or from other sources deemed reliable. We have no reason to doubt its accuracy, but we cannot guarantee it. All properties subject to change or withdrawal without notice.

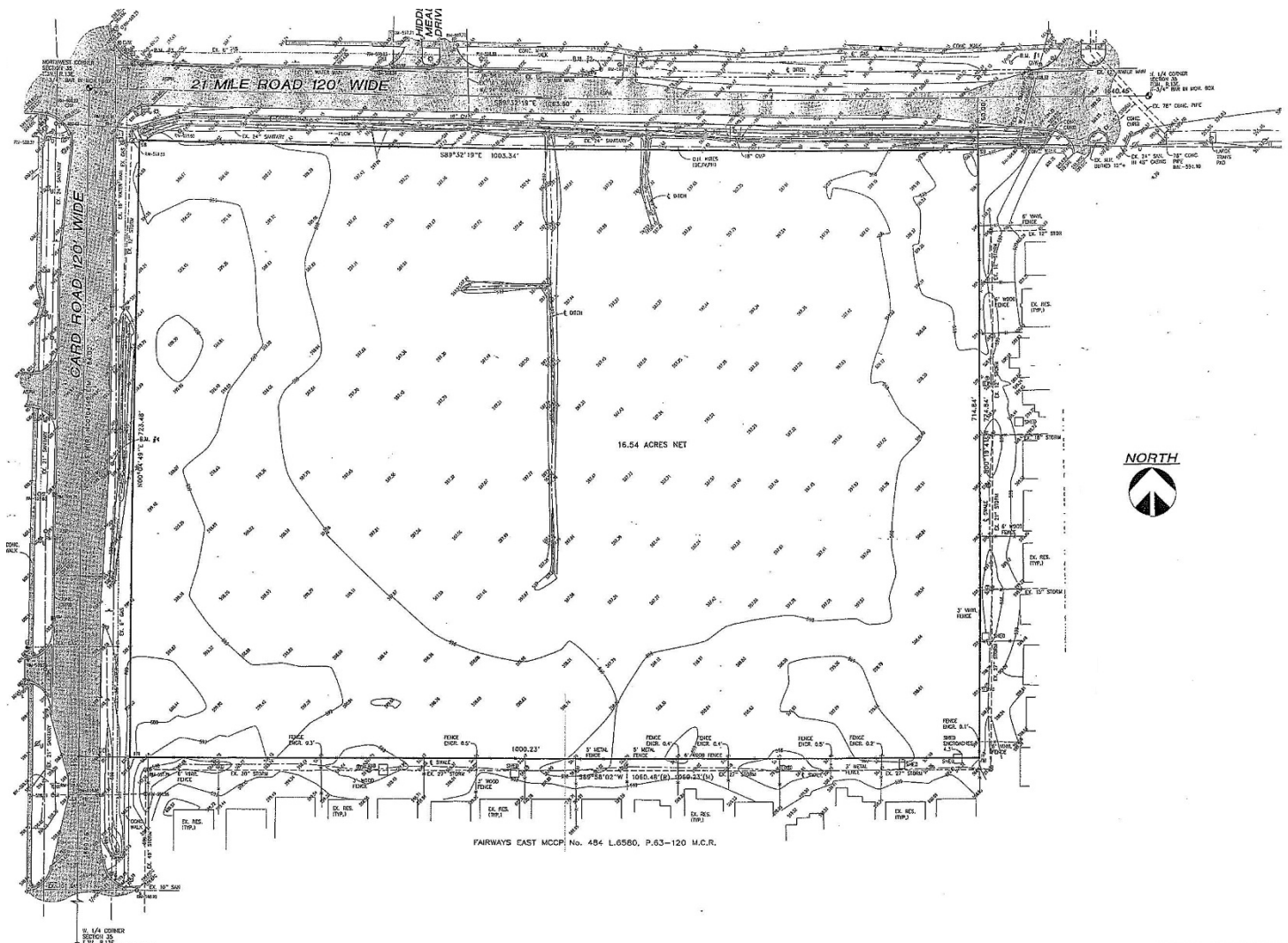
LAND FOR SALE >

19 Acres – Zoned C-3

21 MILE ROAD AND CARD ROAD, MACOMB TOWNSHIP, MICHIGAN



TOPOGRAPHICAL SURVEY



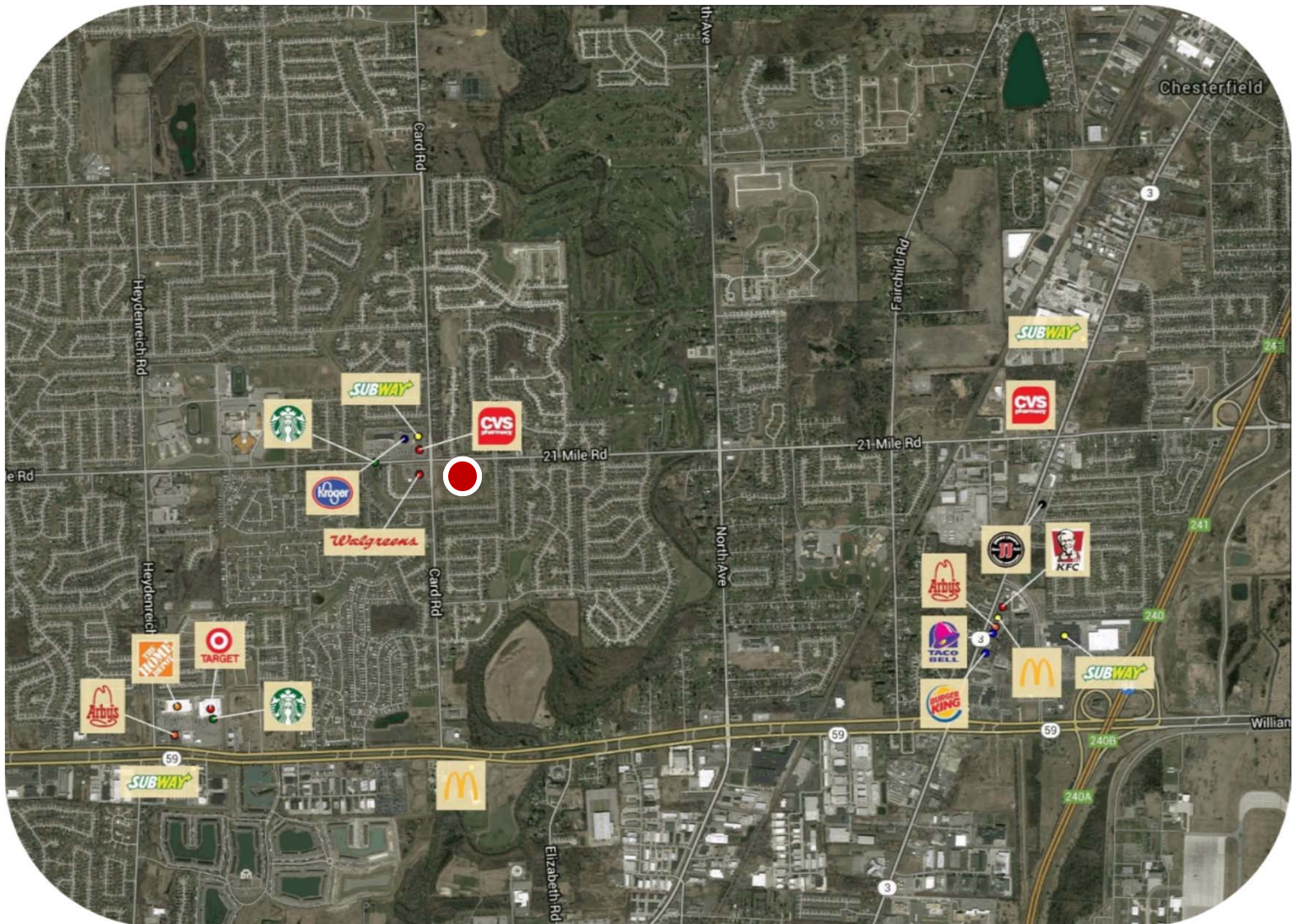
LAND FOR SALE >



19 Acres – Zoned C-3

21 MILE ROAD AND CARD ROAD, MACOMB TOWNSHIP, MICHIGAN

LOCATION AERIAL



COLLIERS INTERNATIONAL
2 Corporate Drive, Suite 300
Southfield, MI 48076
www.colliers.com

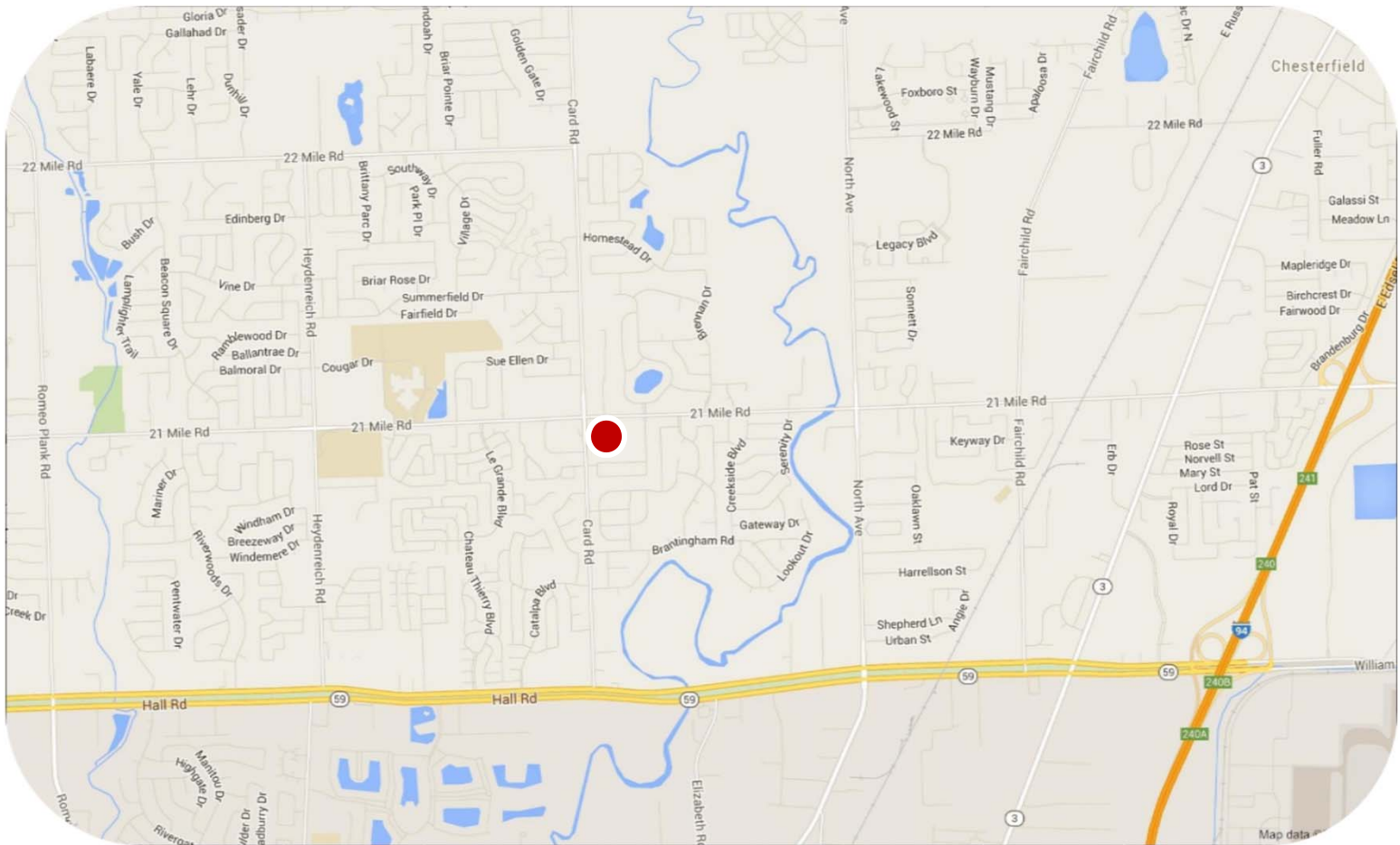
LAND FOR SALE >

19 Acres – Zoned C-3



21 MILE ROAD AND CARD ROAD, MACOMB TOWNSHIP, MICHIGAN

LOCATION MAP



PETER E. KEPIC, SIOR
248 540 1000 | Ext 1840
Southfield, MI 48076
peter.kepic@colliers.com

PETER J. KEPIC, SIOR
248 540 1000 | Ext 1842
Southfield, MI 48076
peter.j.kepic@colliers.com

COLLIERS INTERNATIONAL
2 Corporate Drive, Suite 300
Southfield, MI 48076
www.colliers.com