

FOR LEASE > OFFICE

Timp Chiropractic Bldg.

28 NORTH 100 EAST PLEASANT GROVE, UTAH



Property Information

- > Available space: 2,325 SF
- > High traffic area
- > Currently configured for professional offices or Medical type application
- > Reasonable lease rate

DEMOGRAPHICS

	1 MILE	3 MILE	5 MILE
Population			
2017 Estimated	14,144	63,641	143,776
2022 Projected	15,230	68,938	154,587
Households			
2017 Estimated	4,417	17,835	39,856
2022 Projected	4,772	19,405	42,972
Income			
2017 Median HHI	\$58,809	\$69,079	\$70,332
2017 Average HHI	\$75,110	\$88,117	\$88,219
2017 Per Capita	\$23,409	\$24,820	\$24,587

Information provided by ESRI Business Analyst

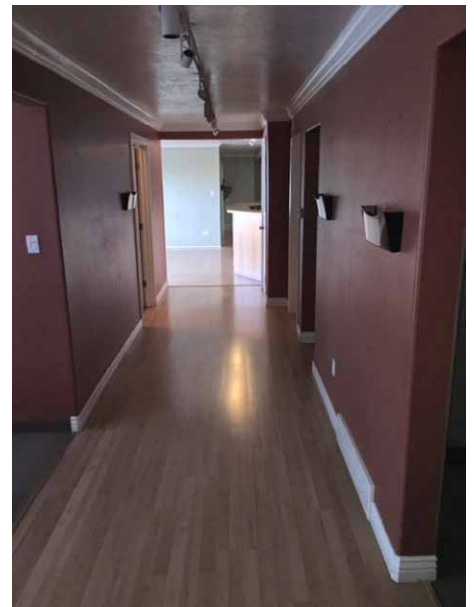
JD Brisk
+1 801 666 5776
jd.brisk@colliers.com

Colliers International
2100 Pleasant Grove Blvd. | Suite 200
Pleasant Grove, UT 84062
P: +1 801 610 1300

FOR LEASE > OFFICE

Timp Chiropractic Bldg.

28 NORTH 100 EAST PLEASANT GROVE, UTAH



JD Brisk
+1 801 666 5776
jd.brisk@colliers.com

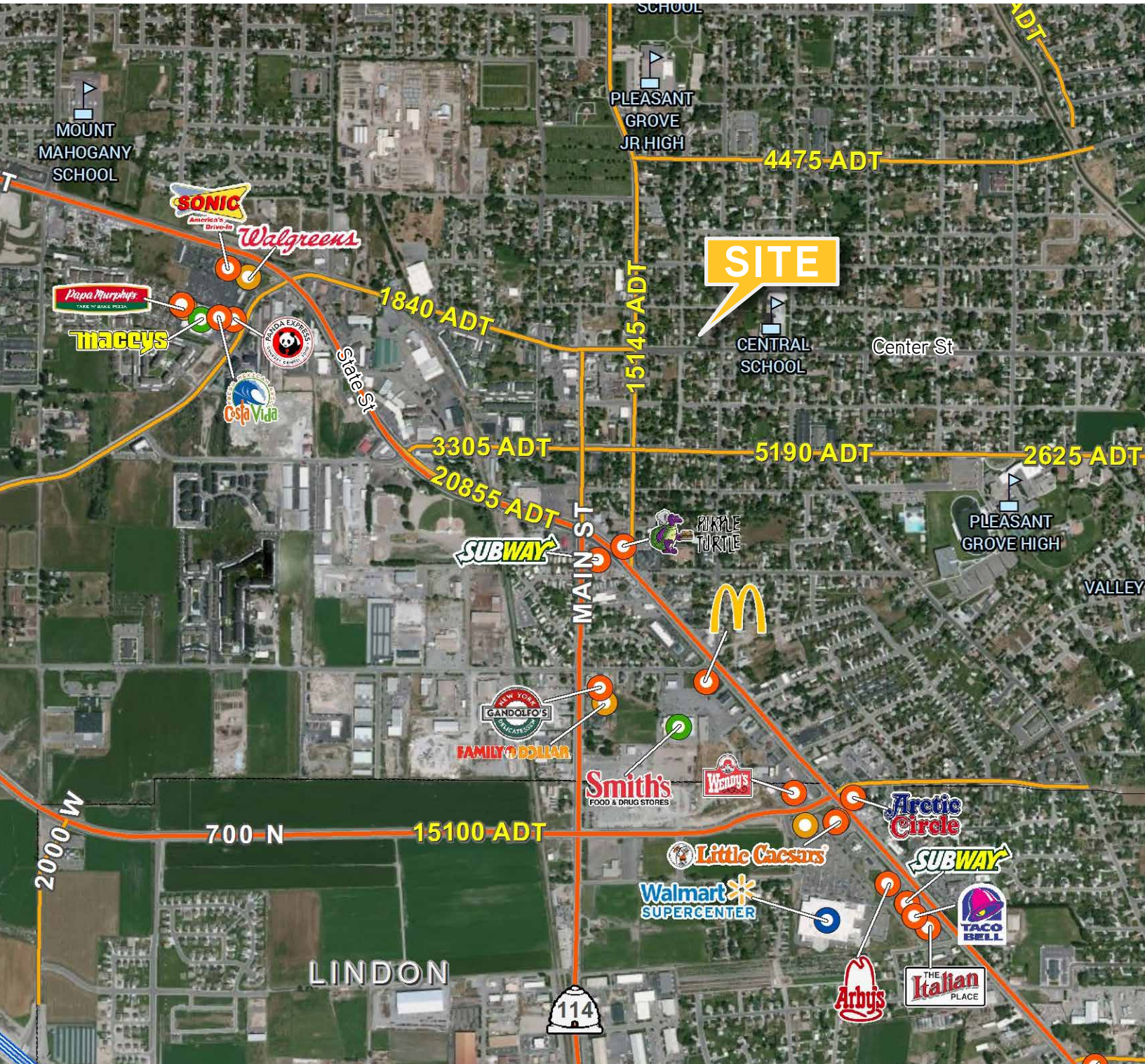
Colliers International
2100 Pleasant Grove Blvd. | Suite 200
Pleasant Grove, UT 84062
P: +1 801 610 1300



FOR LEASE > OFFICE

Timp Chiropractic Bldg.

28 NORTH 100 EAST PLEASANT GROVE, UTAH



This document has been prepared by Colliers International for advertising and general information only. Colliers International makes no guarantees, representations or warranties of any kind, expressed or implied, regarding the information including, but not limited to, warranties of content, accuracy and reliability. Any interested party should undertake their own inquiries as to the accuracy of the information. Colliers International excludes unequivocally all inferred or implied terms, conditions and warranties arising out of this document and excludes all liability for loss and damages arising there from. This publication is the copyrighted property of Colliers International and/or its licensor(s). ©2018. All rights reserved.

Colliers International
2100 Pleasant Grove Blvd. | Suite 200
Pleasant Grove, UT 84062
P: +1 801 610 1300

