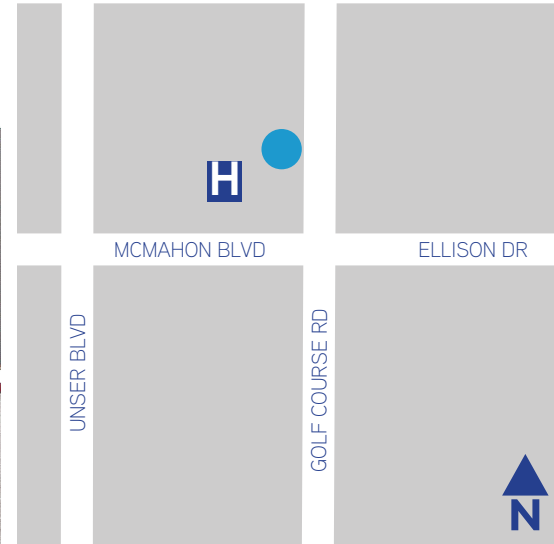


FOR LEASE > OFFICE SPACE



# West Mesa Medical Pavilion

10511 GOLF COURSE RD. NW, ALBUQUERQUE, NM 87114



## Westside Mesa Medical Pavilion > Office Space

- > Lease Rate: \$21.50/SF
- > Lease Type: Full Service
- > Available Space: Suite 205: +/- 8,916 SF
- > Zoning: SU-1

## Building Amenities

- > New medical office space for lease
- > Adjacent to Lovelace Westside Hospital
- > 7.5:1,000 parking ratio
- > Direct building access from upper and lower parking lots
- > Fire sprinkler system throughout
- > Only one suite left!
- > Suite 205: 8,916 SF
  - Can be demised
  - Shell space ready for build-out
  - Generous tenant improvement allowance

## Contact Us

ANNE APICELLA  
VICE PRESIDENT  
+1 505 880 7059  
ALBUQUERQUE, NM  
[anne.apicella@colliers.com](mailto:anne.apicella@colliers.com)

COLLIERS INTERNATIONAL  
+1 505 883 7676 Main  
5051 Journal Center Blvd NE, Suite 200  
Albuquerque, NM 87109  
[www.colliers.com](http://www.colliers.com)

*Independently Owned and Operated*

The information contained herein was obtained from sources believed reliable; however, Colliers International makes no guarantees, warranties or representations as to the completeness or accuracy thereof. The presentation of this property is submitted subject to errors, omissions, change of price or conditions prior to sale or lease, or withdrawal without notice.



FOR LEASE > OFFICE SPACE

## Property Photos

10511 GOLF COURSE RD. NW, ALBUQUERQUE, NM 87114



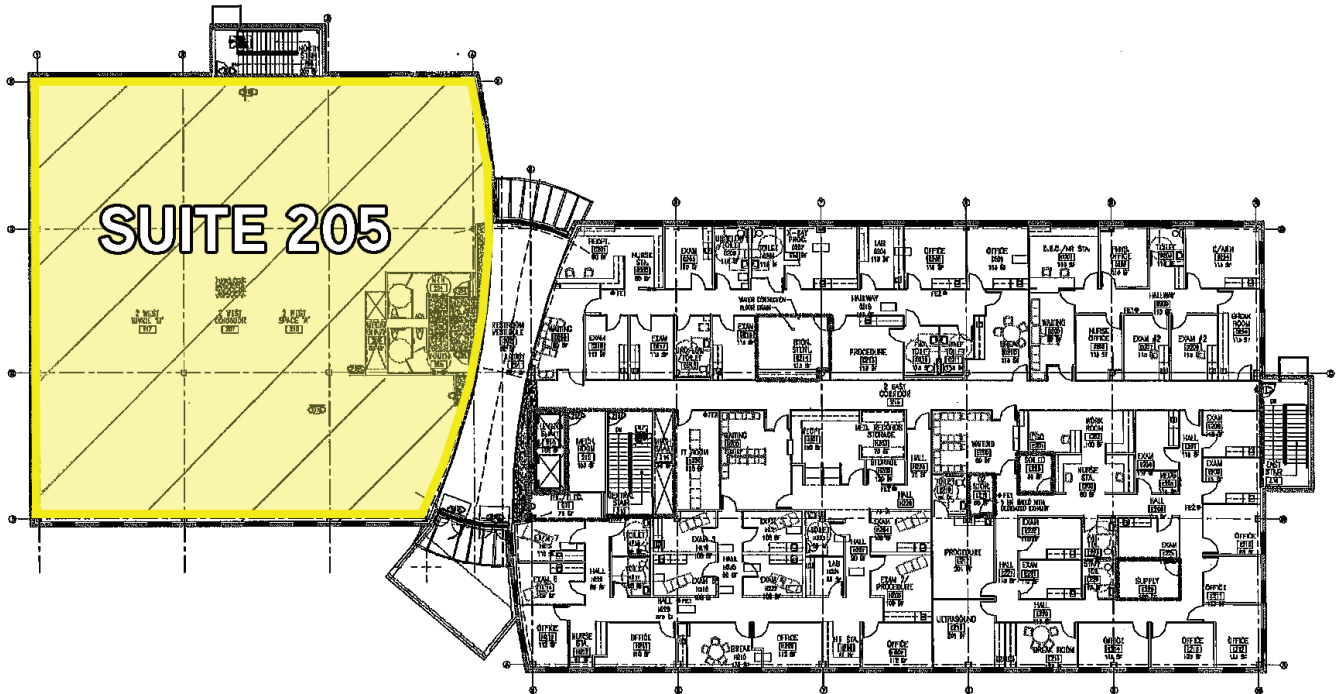
COLLIERS INTERNATIONAL  
+1 505 883 7676 Main  
5051 Journal Center Blvd NE, Suite 200  
Albuquerque, NM 87109  
[www.colliers.com](http://www.colliers.com)



FOR LEASE > OFFICE SPACE

## Suite 205

10511 GOLF COURSE RD. NW, ALBUQUERQUE, NM 87114



COLLIERS INTERNATIONAL  
+1 505 883 7676 Main  
5051 Journal Center Blvd NE, Suite 200  
Albuquerque, NM 87109  
[www.colliers.com](http://www.colliers.com)