

# 2487 Aloma Avenue



## FOR SALE

2487 Aloma Avenue  
Winter Park, FL 32792

MATTHEW MCKEEVER, CCIM, SIOR  
DIRECT: 407 362 6137  
MOBILE: 407 927 2006  
[matthew.mckeever@colliers.com](mailto:matthew.mckeever@colliers.com)

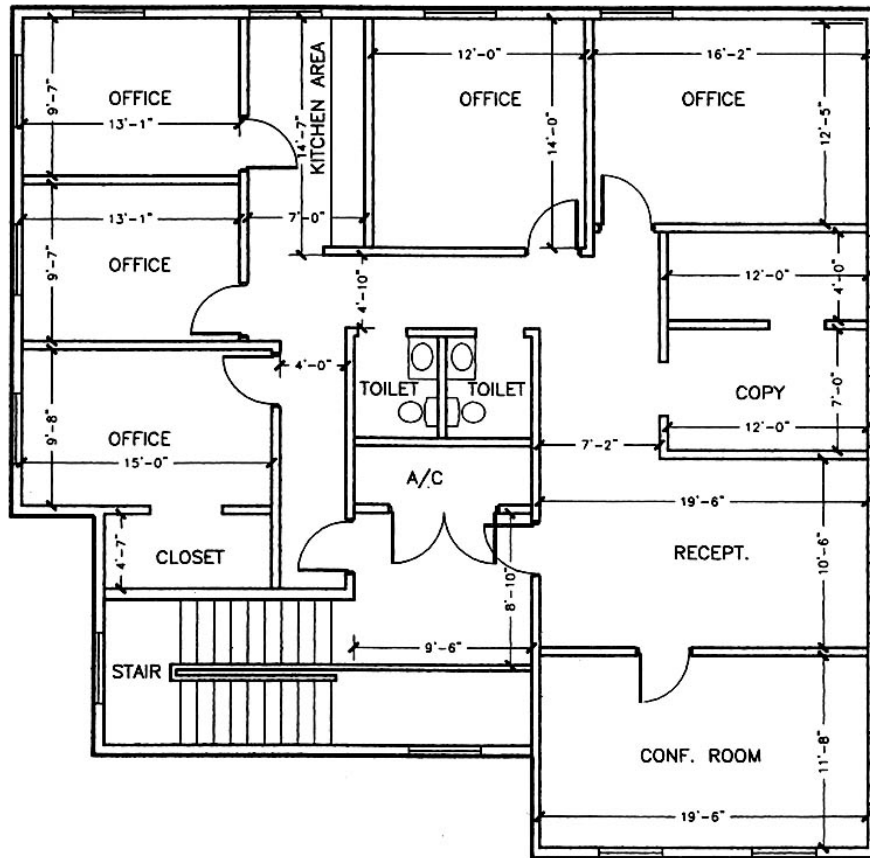


## Key Features

- › Excellent tenant signage on Aloma as well as potential building signage
- › Two-story 4,575 SF Class A office building located in the Gallery Office Center along Aloma Avenue
- › Convenient location offering great access to Park Avenue, Rollins College, Winter Park Memorial Hospital as well as other retail and business centers
- › Generous parking
- › Potential Development Site
- › Site is within minutes of Downtown Orlando and other major Central Florida destinations



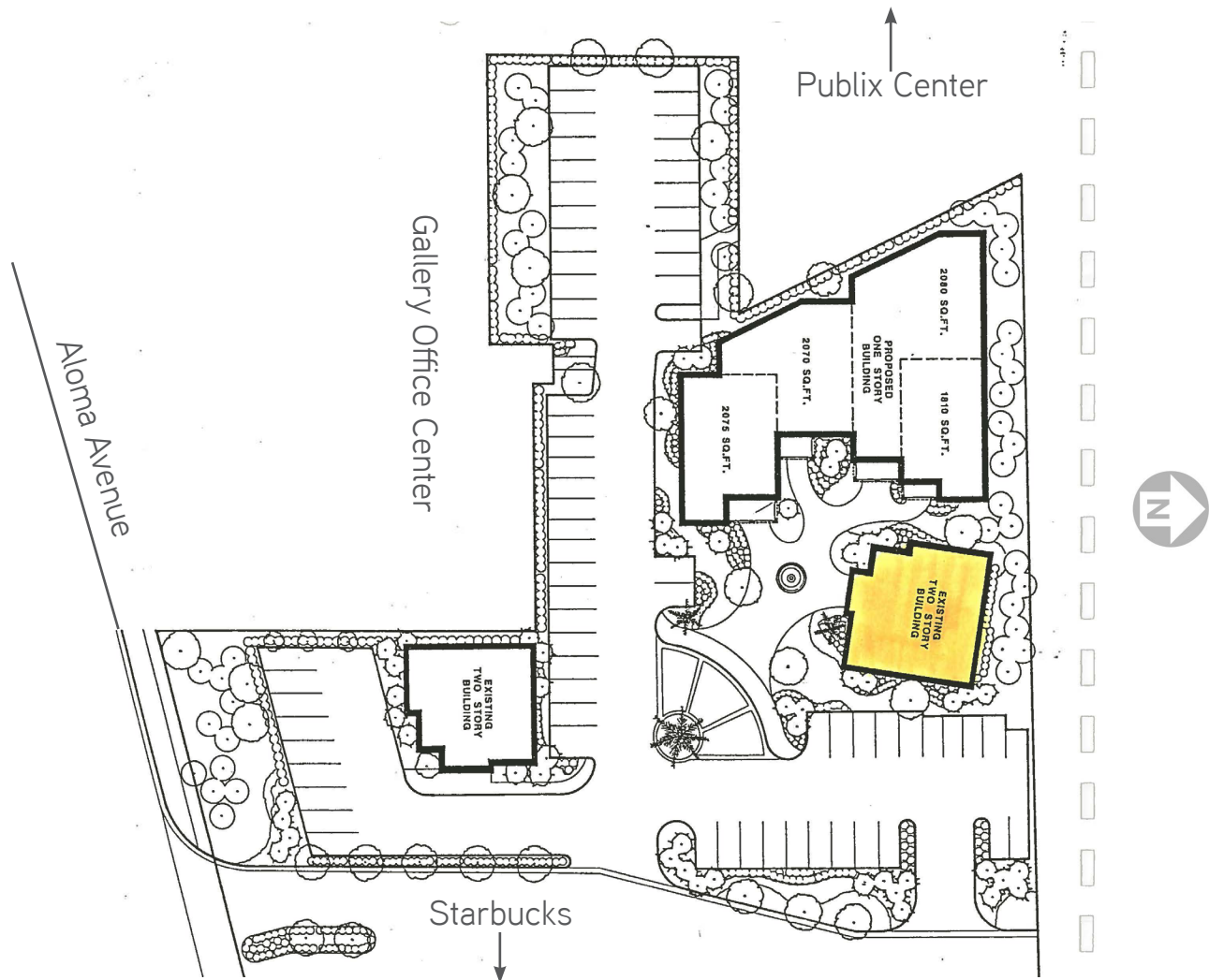
## FLOOR PLAN - SECOND FLOOR







## SITE PLAN - Gallery Office Center



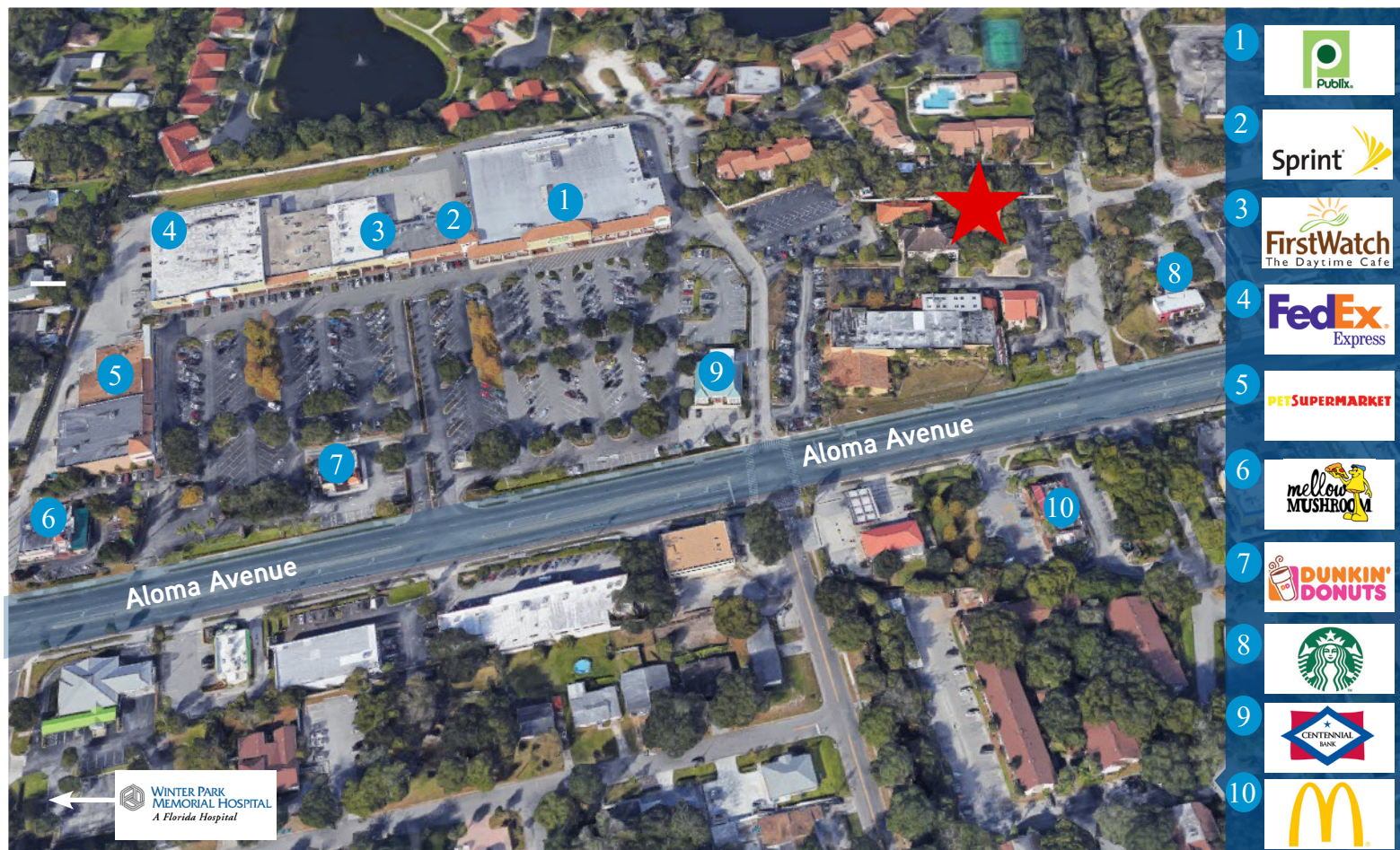


FOR SALE > 2487 Aloma Avenue

## SALE PRICE

\$1,599,000

## LOCAL AMENITIES



## Contact Us

MATTHEW MCKEEVER, CCIM, SIOR  
407 362 6137  
matthew.mckeever@colliers.com

This document/email has been prepared by Colliers International for advertising and general information only. Colliers International makes no guarantees, representations or warranties of any kind, expressed or implied, regarding the information including, but not limited to, warranties of content, accuracy and reliability. Any interested party should undertake their own inquiries as to the accuracy of the information. Colliers International excludes unequivocally all inferred or implied terms, conditions and warranties arising out of this document and excludes all liability for loss and damages arising there from. This publication is the copyrighted property of Colliers International and /or its licensors(s). © 2018. All rights reserved. This communication is not intended to cause or induce breach of an existing listing agreement.



COLLIERS INTERNATIONAL

255 South Orange Avenue  
Suite 1300  
Orlando, FL 32801

[www.colliers.com](http://www.colliers.com)