

FOR LEASE > OFFICE

Sandy Office

8676 SOUTH 1300 EAST | SANDY, UTAH



Property Information

- > AVAILABLE SPACE:
3,080 SF main level
2,500 SF basement level
- > Option to Live/Work – 2,500 SF apartment available on the second floor
- > LEASE RATE: \$13.00/SF, full service
- > Monument signage available
- > 10 parking stalls – 3/1000
- > Close to numerous amenities

DEMOGRAPHICS	1 Mile	3 Mile	5 Mile
Population			
2017 Estimated	17,446	136,169	269,476
2022 Projected	18,155	142,581	284,300
Households			
2017 Estimated	5,768	47,680	94,285
2022 Projected	5,999	49,881	99,396
Income			
2017 Median HHI	\$80,524	\$70,488	\$72,078
2017 Average HHI	\$101,841	\$92,395	\$95,812
2017 Per Capita	\$34,091	\$32,408	\$33,605

Information provided by ESRI Business Analyst

Rusty Lugo
+1 801 947 8377
rusty.lugo@colliers.com

Lori Coburn
+1 801 947 8352
lori.coburn@colliers.com

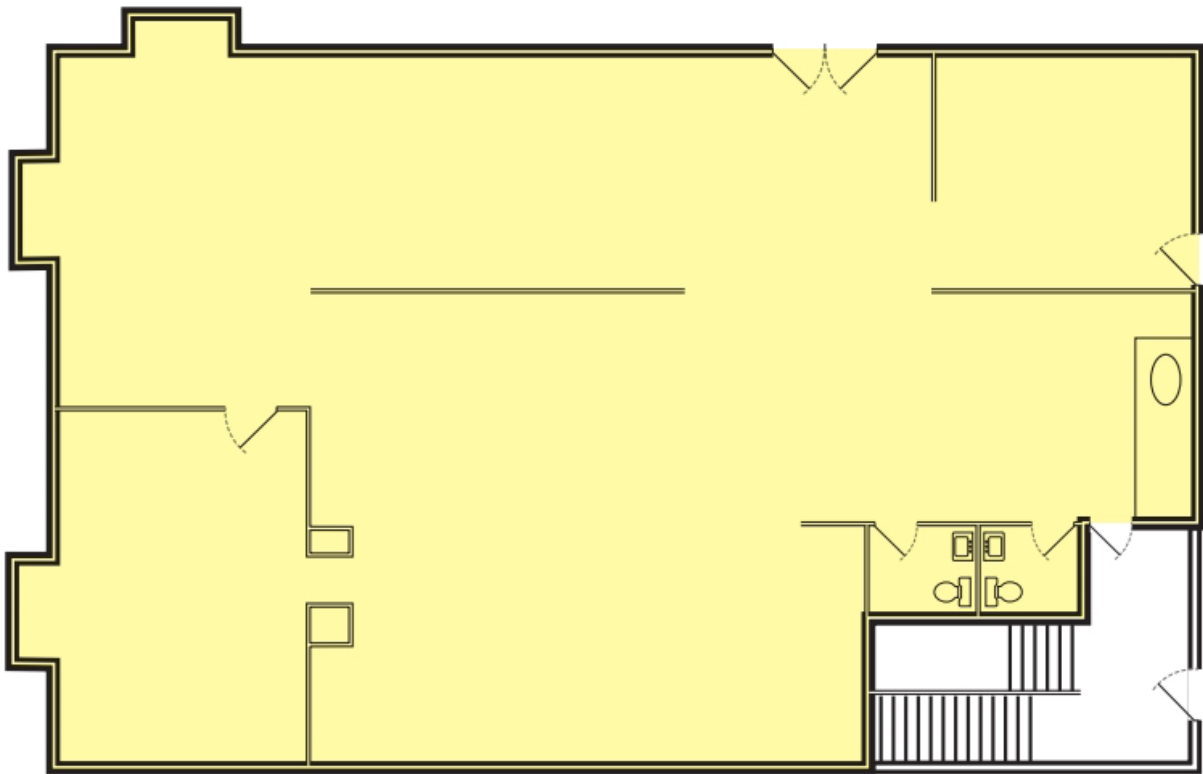
Colliers International
6550 South Millrock Dr., Suite 200
Salt Lake City, Utah 84121

Sandy Office

8676 SOUTH 1300 EAST | SANDY, UTAH

FLOOR PLAN

SUITE/FLOOR	Avail SF	Min/Max SF	Vacancy (Vacant/Occupied)	Lease Rate	Lease Type (NNN, MG, FS)
Main	3,080	3,080	Vacant	13.00	SF



Sandy Office

AREA AMENITIES MAP



Lori Coburn
+1 801 947 8352
loricoburn@colliers.com

