

STEVENS CREEK
PROMENADE

4360
STEVENS CREEK BLVD
SAN JOSE, CA



2 RETAIL UNITS FOR LEASE



4360 STEVENS CREEK BLVD AT LOPINA WAY

SAN JOSE, CA



AVAILABILITY

4360 STEVENS CREEK BLVD.

SATELLITE
HEALTHCARE

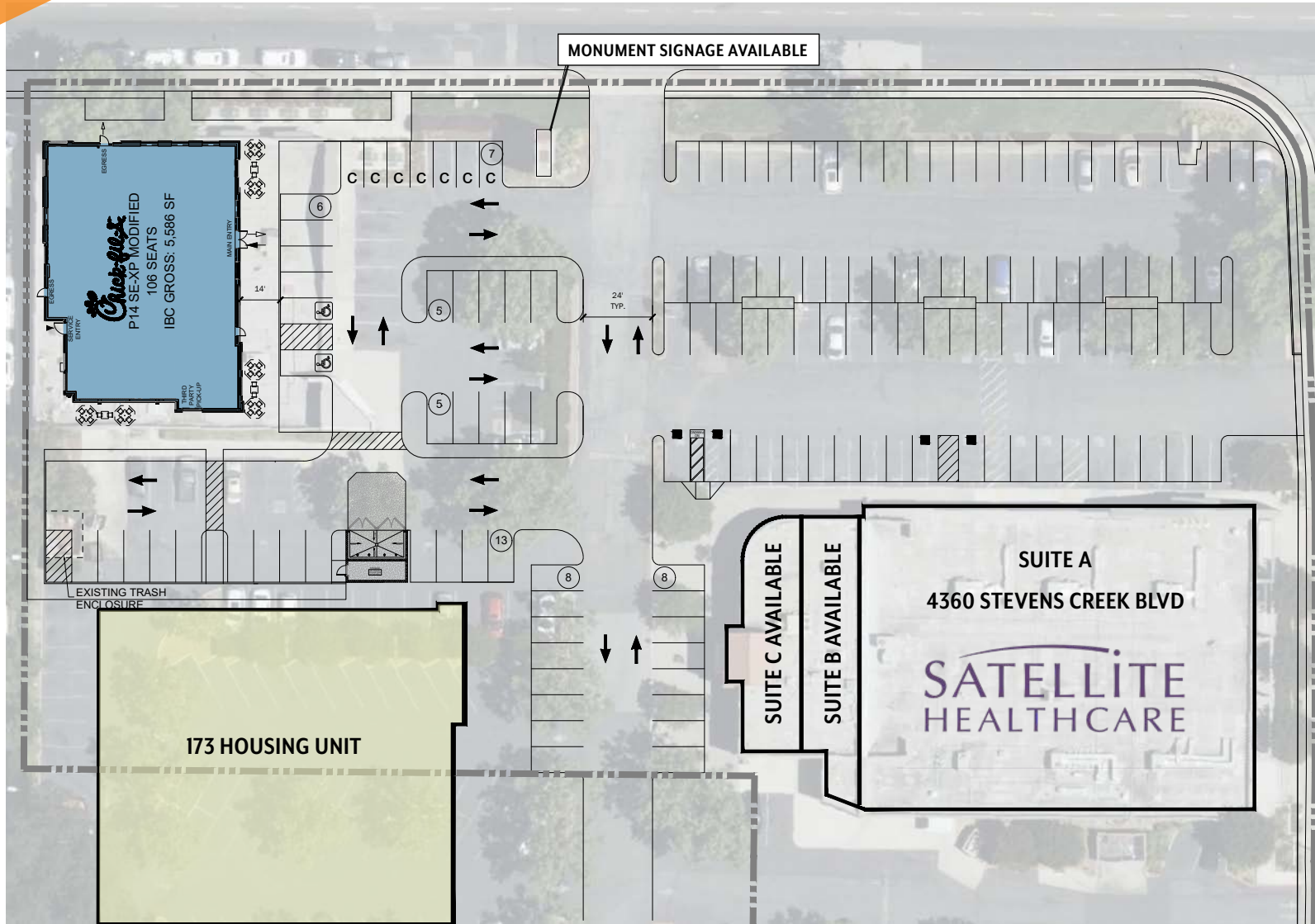
1. #B: ±1,732 SQ. FT. AVAILABLE
2. #C: ±1,753 SQ. FT. AVAILABLE

LEASE RATE
\$5.00 PSF NNN
NNN APP \$1.25

STEVENS CREEK PROMENADE



SITE PLAN



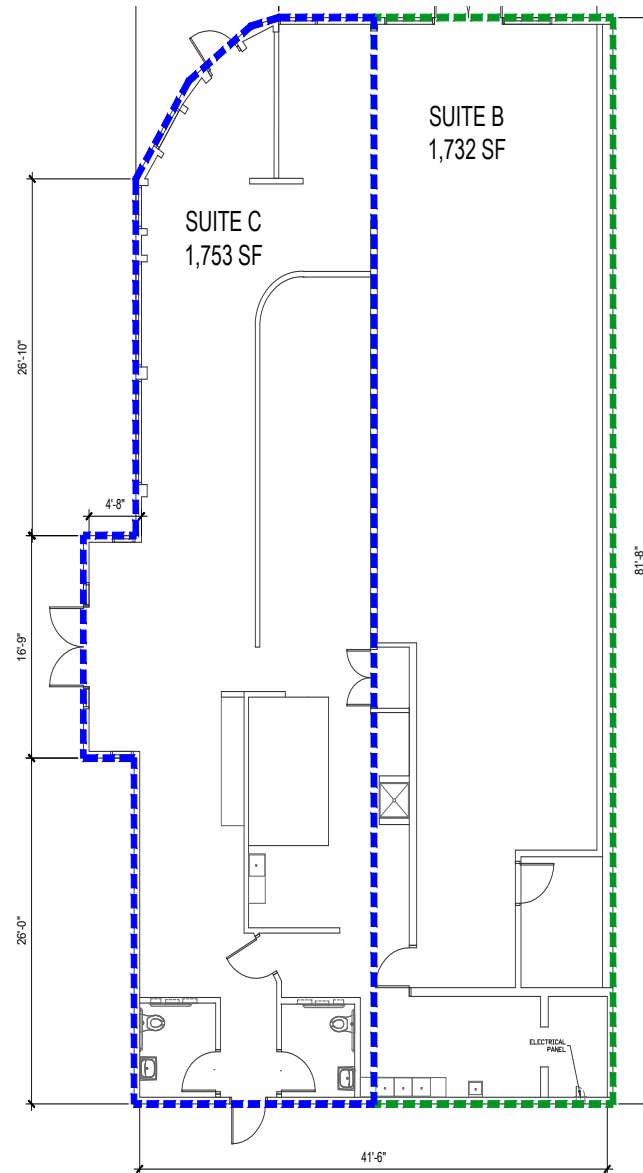
MONUMENT SIGNAGE AVAILABLE



STEVENS CREEK **PROMENADE**

FLOOR PLAN

STEVENS CREEK BLVD



Suites B and C
4360 Stevens Creek Boulevard
San Jose, CA 95129

STEVENS CREEK PROMENADE

TRADE AREA AERIAL



STEVENS CREEK PROMENADE

Westfield Valley Fair

- bloomingdales
- california PIZZA KITCHEN
- THE CHEESECAKE FACTORY
- NORDSTROM
- OLD NAVY
- Apple
- Red Bull
- MACY'S
- SHAKE SHACK
- OrangeTheory FITNESS

Santana Row

- MENDOCINO FARMS sandwich market
- FOGO DE CHAO BRAZILIAN STEAKHOUSE
- MAGGIANO'S A LITTLE ITALY
- The Container Store
- BEST BUY
- H&M
- Yard House
- Crate & Barrel
- Peet's COFFEE
- Starbucks

DEMOGRAPHICS

	1 MILE	3 MILES	5 MILES
RESIDENTIAL POPULATION	34,578	266,423	571,389
DAYTIME POPULATION	30,506	244,596	662,770
AVERAGE HOUSEHOLD INCOME	\$175,426	\$189,258	\$200,624
BACHELOR'S DEGREE ATTAINED	34.9%	33.7%	34.2%



This document/email has been prepared by Colliers for advertising and general information only. Colliers makes no guarantees, representations or warranties of any kind, expressed or implied, regarding the information including, but not limited to, warranties of content, accuracy and reliability. Any interested party should undertake their own inquiries as to the accuracy of the information. Colliers excludes unequivocally all inferred or implied terms, conditions and warranties arising out of this document and excludes all liability for loss and damages arising there from. This publication is the copyrighted property of Colliers and /or its licensor(s). © 2026. All rights reserved. This communication is not intended to cause or induce breach of an existing listing agreement. Colliers International

