

A BUILDING WITHIN A BUILDING

EXCLUSIVE OPPORTUNITY

900
JOHN STREET

Signage





SIZE

Ground - 3,529 SF

Mezzanine - 3,924 SF

Second Floor - 20,465 RSF

*Reasonable Divisions Considered

FRONTAGE

Ground - 35 feet

Second Floor - 250 feet wraparound

RENT

Upon request

TERM

Negotiable

POSSESSION

Immediate

CEILING HEIGHTS

Ground - 25 Feet

Mezzanine - 12 Feet

Second Floor - 14 Feet

NEIGHBORING TENANTS

Stout, Harry's Italian, Jubilee Marketplace, Dunkin Donuts, Citibank, HSBC, South Street Seaport, Fulton Transit Hub

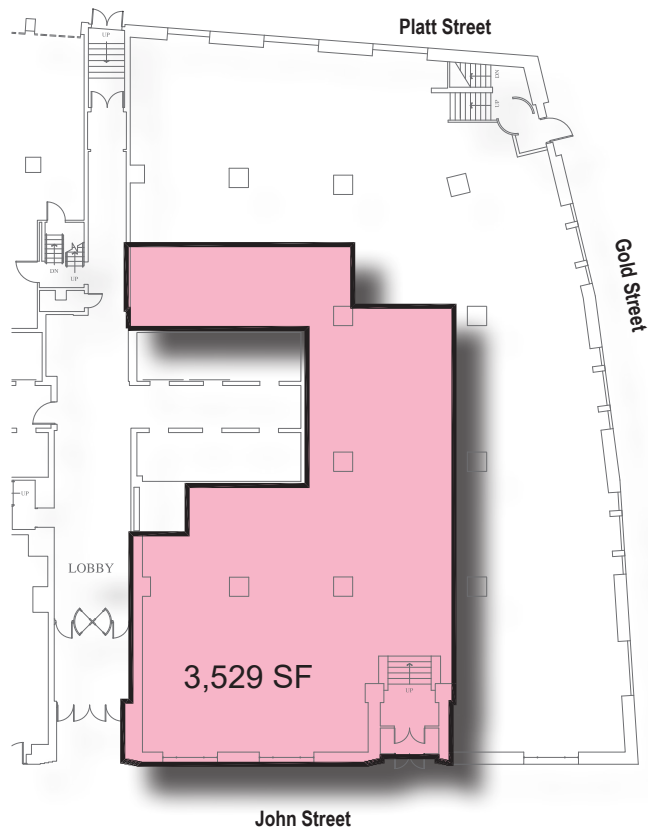
COMMENTS

- A "Building within a Building" opportunity
- Dramatic, high ceilings
- Great frontage
- Direct access and 24 hour attended lobby
- Lower Manhattan incentives
- Steps from major transportation; 2, 3, 4, 5. A, C, J, M
- At the base of a 100,000 sf office building
- Additional office suites available 2,337 - 6,600 SF

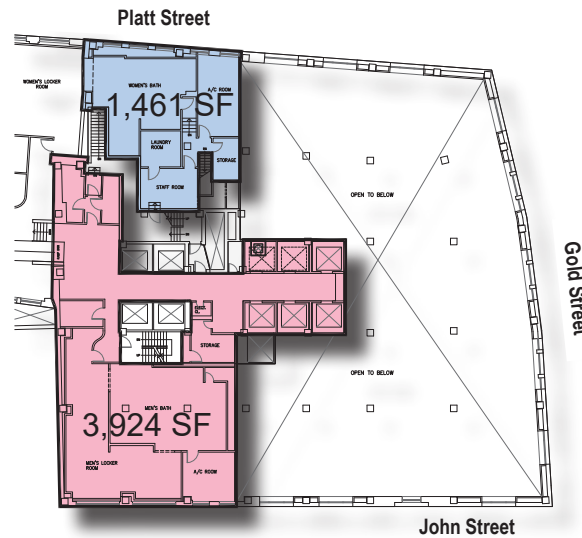
SITE INFORMATION



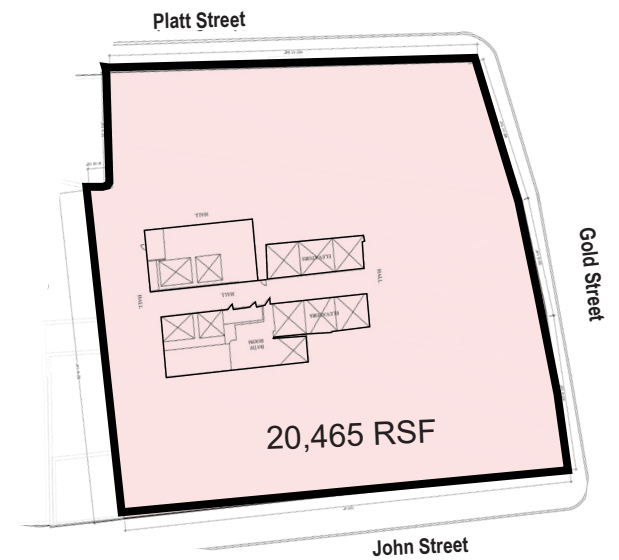
GROUND FLOOR



MEZZANINE



SECOND FLOOR



SITE FLOOR PLANS



SITE LOCATION

M

FOR ADDITIONAL INFORMATION, PLEASE CONTACT

DAVID TRICARICO

Executive Director

+ 1 212 716 3585

David.Tricarico@Colliers.com

JEDD HORN

Associate Director

+ 1 212 716 3589

Jedd.Horn@Colliers.com

ROBERT GALLUCCI

Executive Director

+ 1 212 716 3621

Robert.Gallucci@Colliers.com



COLLIERS INTERNATIONAL NY LCC | 666 FIFTH AVENUE NEW YORK, NY

No representation is made as to the accuracy of the information furnished herein and same is submitted subject to errors, omissions, change of prices, rental, or other conditions, prior sale, lease, sublease, and/or withdrawal without notice. The furnishing of this information shall not be deemed a hiring. A commission in accordance with our principal's schedule of rates and conditions will be paid to the procuring Broker who executes our or our principal's brokerage agreement, subject to a fully consummated transaction upon terms and conditions acceptable to our principal.