

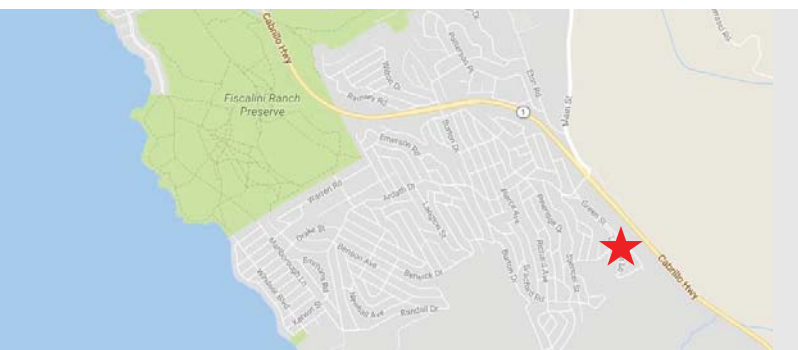
FOR SALE > LAND DEVELOPMENT

# Cambria Development

LONDONDERRY LANE | CAMBRIA | CALIFORNIA



## LODGE HILL DISTRICT / 12 UNIT DEVELOPMENT OPPORTUNITY



Located in the Lodge Hill district, in the southwestern section of Cambria, the project offers panoramic views of the surrounding hillsides. New development in the community of Cambria has been severely limited over the last 14 years due to the building moratorium established by Cambria in 2001 resulting in limited competition for the project. The property has pending water allocations for 12 water meters, with “will serve” letters from the Cambria Community Service District (CCSD).

VIEW ONLINE: [www.colliers.com/jason.hart](http://www.colliers.com/jason.hart)



# Cambria Development Overview

Large hillside development site with 3 APNs with 21 underlying legal lots. Conceptual site and grading plans propose lot line adjustments to create a total of 10 separate single family parcels, two of which would feature secondary units. The property has pending water allocations for 12 water meters, with "will serve" letters from the Cambria Community-Service District (CCSD).

- › Offering Price: \$550,000
- › Proposed number of units: 10SFR  
+ 2 secondary units
- › Seller may carry
- › Land Area: 1.525 Acres
- › APNs: 024-191-013, 062, & 063
- › Zoning: Residential Multi-Family (RMF)
- › \$45,833 / unit

## Cambria

Cambria where the pines meet the sea on California's Central Coast is perhaps the most scenic locale mixed with a Mediterranean type of climate for year round comfortable living. Located approximately 35 miles north of San Luis Obispo and 6 miles south of Hearst Castle, Cambria is conveniently located on the ocean between San Francisco and Los Angeles. Cambria's pine covered hills and rugged shoreline attracts many artists and tourists. The population is approximately 6,500 including outlying ranches and farms. Originally subdivided over 70 years ago, Cambria was developed into small, average quality vacation homes. Recent trends have been toward above average quality customhomes. At present the community is approximately 45 percent developed. The local water district, Cambria Community Services District, issues water and sewer permits. Due to the countywide Growth Management Ordinance, the wait for building in Cambria is approximately 20 years, unless purchasing a lot already on the CCSD water/sewer list awaiting permits.

# Parcel Map

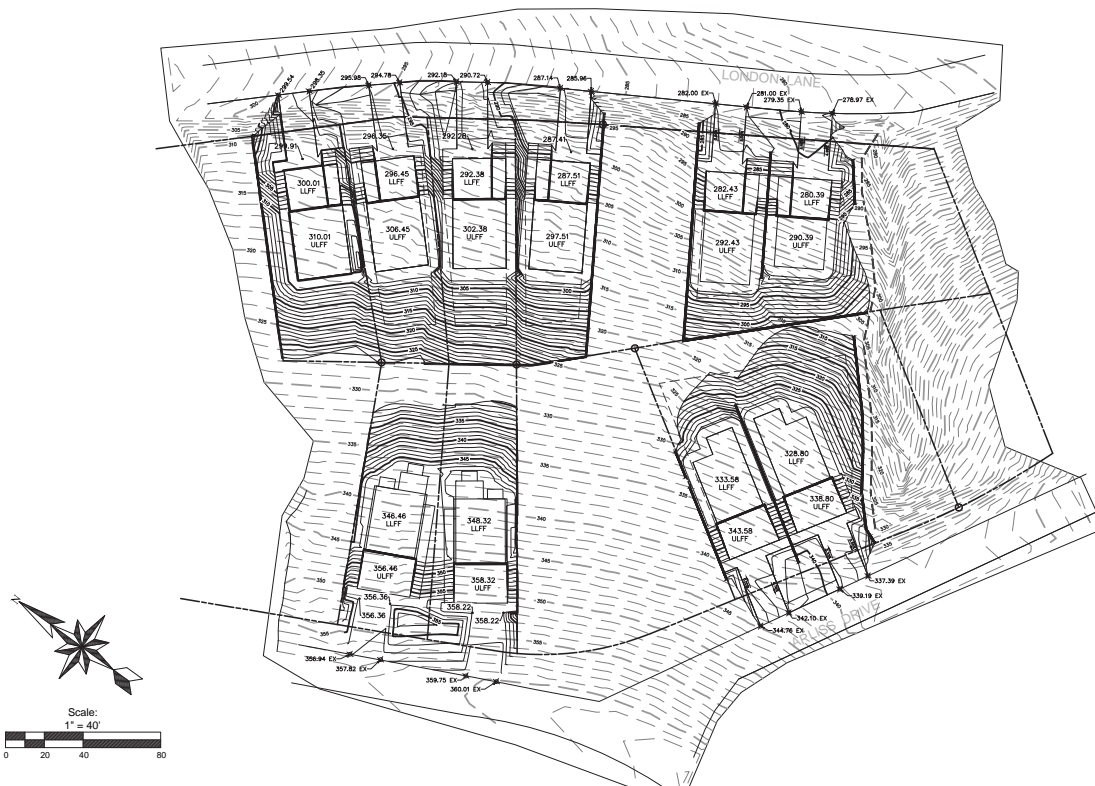
024-191-013

024-191-062

024-191-063



# Grading Plan







## › Contact Us

### JASON HART

Senior Vice President  
Central California Coast  
Real Estate Broker  
BRE# 01334694  
+1 805 595 1555

## COLLIERS INTERNATIONAL

### CENTRAL CALIFORNIA COAST

575 Price Street, Suite 211  
Pismo Beach, CA 93449

+1 805 595 1555

[colliers.com/jason.hart](http://colliers.com/jason.hart)

This document has been prepared by Colliers International for advertising and general information only. Colliers International makes no guarantees, representations or warranties of any kind, expressed or implied, regarding the information including, but not limited to, warranties of content, accuracy and reliability. Any interested party should undertake their own inquiries as to the accuracy of the information. Colliers International excludes unequivocally all inferred or implied terms, conditions and warranties arising out of this document and excludes all liability for loss and damages arising there from. This publication is the copyrighted property of Colliers International and/or its licensor(s). ©2016. All rights reserved.



Accelerating success.