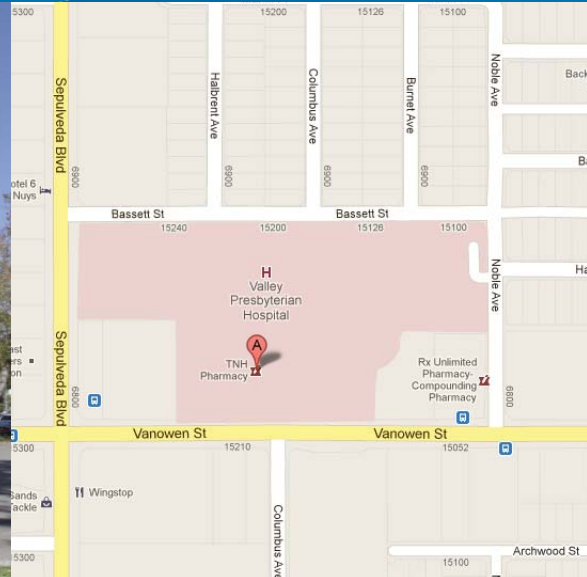


# FOR LEASE > MEDICAL OFFICE SPACE 15211 VANOWEN STREET

VAN NUYS, CA 91405



## MEDICAL OFFICE SPACE

**Available Space:** Suite 300 -  $\pm 3,000$   
Suite 205 -  $\pm 981$

**Rate:** Negotiable

**Term:** Flexible

**Parking:** Surface : Structure

**Building Size:** 45,579 Square Feet

## BUILDING AMENITIES

- On Campus at Valley Presbyterian Hospital Campus
- Conveniently located near the 101 and 405 Freeways
- Additional retail amenities within walking distance
- Tenant Improvement allowance available

## Contact Us

DANA NIALIS  
License No. 01947265  
DIR 818 325 4107  
[dana.nialis@colliers.com](mailto:dana.nialis@colliers.com)

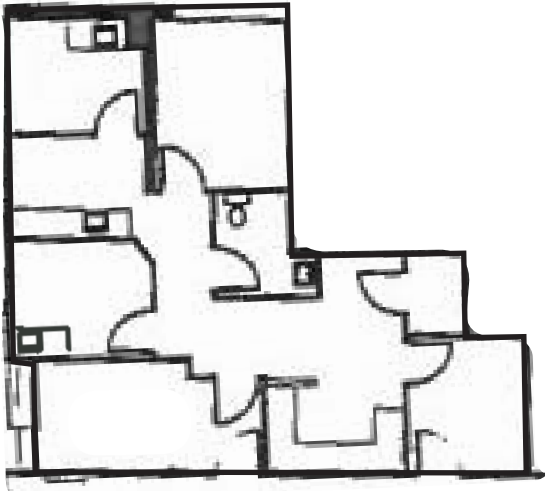
# FOR LEASE > MEDICAL OFFICE SPACE 15211 VANOWEN STREET



VAN NUYS, CA 91405

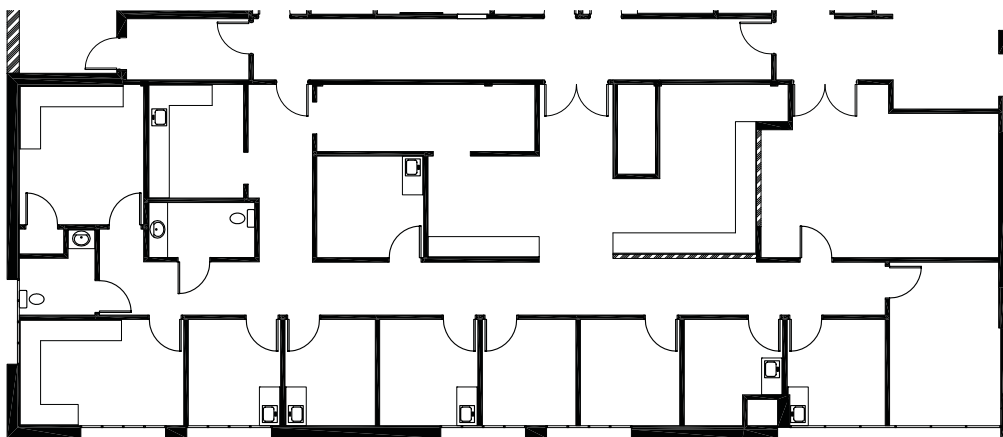
## Suite 205

±981 RSF



## Suite 300

±3,000 RSF



\*Information contained herein does not constitute a legal offer or acceptance and shall not be legally binding, but shall serve as the basis for negotiation and execution of a mutually acceptable Lease Agreement.

DANA NIALIS  
License No. 01947265  
818 325 4107  
dana.nialis@colliers.com

COLLIERS INTERNATIONAL  
16830 Ventura Boulevard, Suite J  
Encino, CA 91436  
www.colliers.com