

LOTS FOR SALE/LEASE OR BUILD-TO-SUIT

Fresno, California



# PALM LAKES BUSINESS PARK

➤ NEW DEVELOPMENT

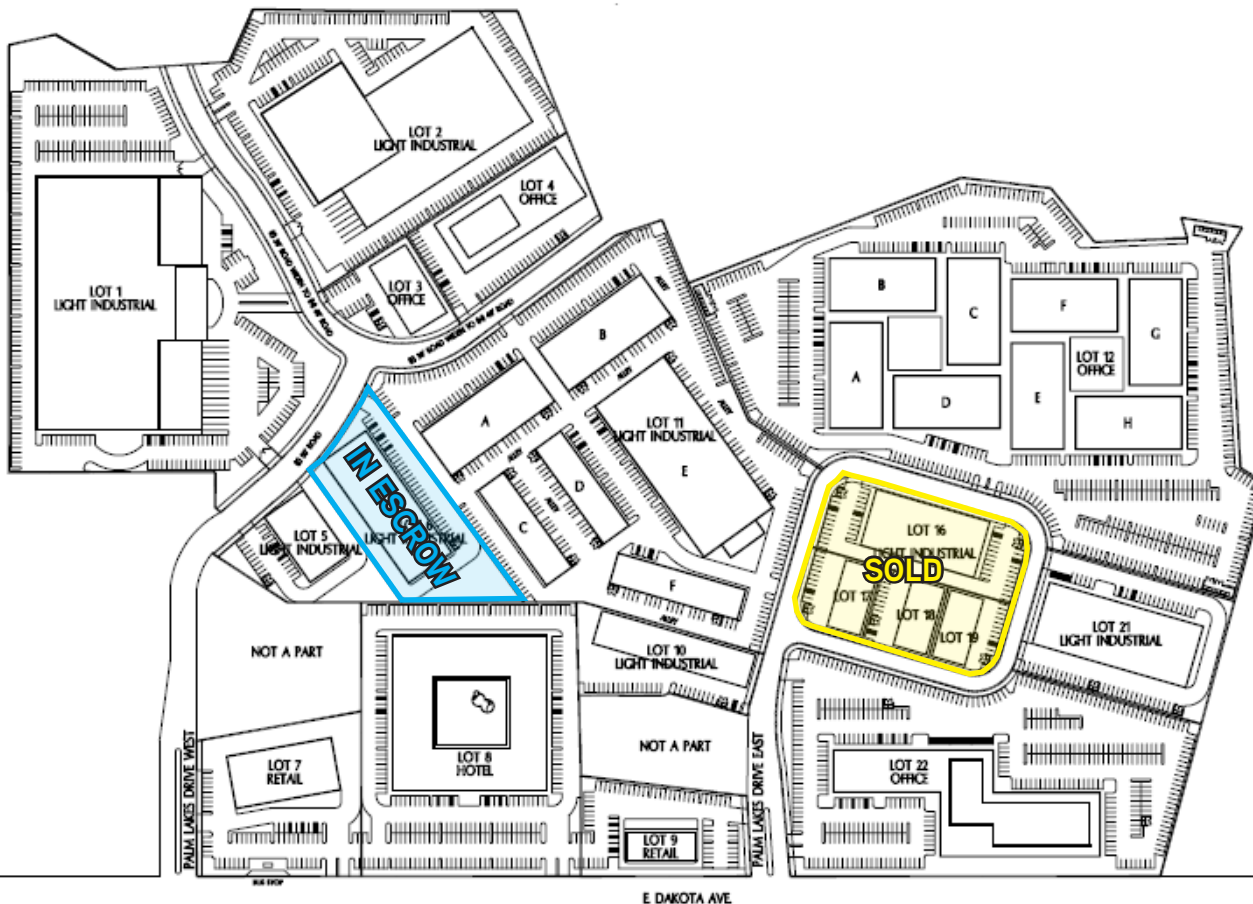
➤ ALL PARCELS CAN BE MODIFIED VIA LOT-LINE ADJUSTMENT TO ACCOMMODATE BUYER'S REQUIREMENT

VARIOUS LOT SIZES STARTING

**\$5.00/SF** for Fully Improved Parcels

## CONCEPTUAL SITE PLAN

Located just north of the Fresno Yosemite International Airport between Peach Avenue and Chestnut Avenue on Dakota Avenue



## Contact Us:

**BUK WAGNER**

559 256 2451

buk.wagner@colliers.com

BRE #01296746

**CHARLIE SCHUH**

559 221 7393

charlie.schuh@colliers.com

BRE #01992259

**CHAD MCCARDELL**

559 256 0157

chad.mccardell@colliers.com

BRE #01313658

COLLIERS INTERNATIONAL

7485 N. Palm Avenue, #110

Fresno, California 93711

[www.colliers.com/fresno](http://www.colliers.com/fresno)

559 221 1271



# LOTS FOR SALE/LEASE OR BUILD-TO-SUIT

Fresno, California



## PALM LAKES BUSINESS PARK

BUILDING	LOT SF	BUILDING SF	BUILDING TYPE	LOT COVERAGE	
Lot 1	508,290	148,340	Light Industrial	29.2%	
Lot 2	232,851	132,428*	Light Industrial	41.4%	
Lot 3	30,832	12,000	Office	38.9%	
Lot 4	62,709	28,944	Office	46.2%	
Lot 5	45,520	13,500	Light Industrial	29.7%	
Lot 6	72,934	28,000	Light Industrial	38.4%	In Escrow
Lot 7	86,442	20,000	Retail	23.1%	
Lot 8	209,326	130,254	Hotel	31.1%	
Lot 9	53,058	6,634	Retail	12.5%	
Lot 10	46,066	19,500	Light Industrial	42.3%	
Lot 11	379,231	24,000 x 2 13,200 x 2 56,000 15,000	Light Industrial	38.3%	
Lot 12	530,894	40,000 x 8*	Office	30.1%	
Lot 16	58,370	24,259	Light Industrial	41.6%	SOLD
Lot 17	21,344	8,450	Light Industrial	39.6%	SOLD
Lot 18	17,424	8,450	Light Industrial	48.5%	SOLD
Lot 19	20,473	8,450	Light Industrial	41.3%	SOLD
Lot 21	86,930	36,000	Light Industrial	41.4%	
Lot 22	280,152	82,782*	Office	21.4%	
<b>TOTAL</b>	<b>2,742,846</b>				

\*2 Story Building

This document has been prepared by Colliers International for advertising and general information only. Colliers International makes no guarantees, representations or warranties of any kind, expressed or implied, regarding the information including, but not limited to, warranties of content, accuracy and reliability. Any interested party should undertake their own inquiries as to the accuracy of the information. Colliers International excludes unequivocally all inferred or implied terms, conditions and warranties arising out of this document and excludes all liability for loss and damages arising there from. This publication is the copyrighted property of Colliers International and/or its licensor(s). ©2018 All rights reserved.

### Contact Us:

**BUK WAGNER**

559 256 2451

buk.wagner@colliers.com

BRE #01296746

**CHARLIE SCHUH**

559 221 7393

charlie.schuh@colliers.com

BRE #01992259

**CHAD MCCARDELL**

559 256 0157

chad.mccardell@colliers.com

BRE #01313658

COLLIERS INTERNATIONAL

7485 N. Palm Avenue, #110

Fresno, California 93711

[www.colliers.com/fresno](http://www.colliers.com/fresno)

559 221 1271

# PALM LAKES BUSINESS PARK

## Ground Package Delivery Transit Days from Fresno

Reach over 38 million customers with guaranteed next-day ground service, without the additional cost of expedited shipping.

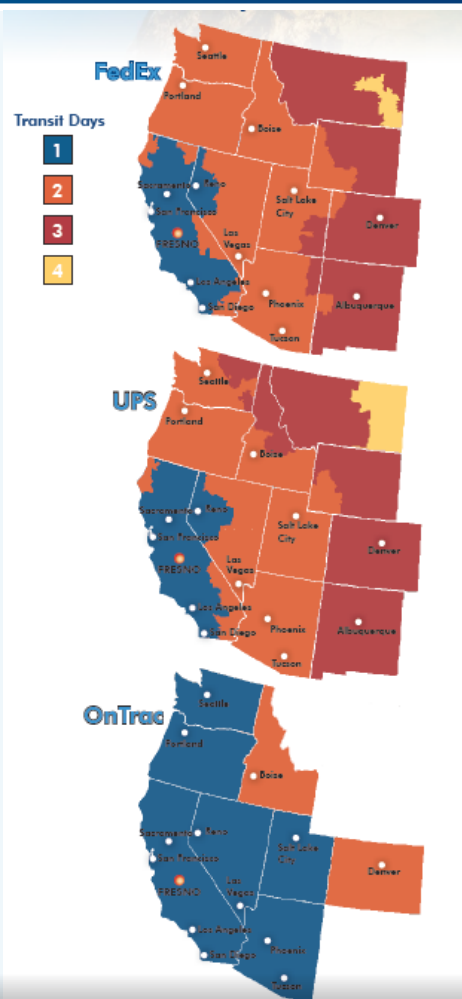
Due to Fresno's unique location in the middle of the state, FedEx, UPS and OnTrac, can reach all of California's major market within 1 day with their standard ground shipping, guaranteed. OnTrac even has the ability to reach the entire west coast with their standard ground shipping service.

Distances to Deep Water Ports

Port	Miles from Fresno
Stockton	116
Oakland	165
LA/Long Beach	241

Source: Fresno EDC

This document has been prepared by Colliers International for advertising and general information only. Colliers International makes no guarantees, representations or warranties of any kind, expressed or implied, regarding the information including, but not limited to, warranties of content, accuracy and reliability. Any interested party should undertake their own inquiries as to the accuracy of the information. Colliers International excludes unequivocally all inferred or implied terms, conditions and warranties arising out of this document and excludes all liability for loss and damages arising there from. This publication is the copyrighted property of Colliers International and/or its licensor(s). ©2018. All rights reserved.



## Contact Us:

**BUK WAGNER**

559 256 2451

buk.wagner@colliers.com

BRE #01296746

**CHARLIE SCHUH**

559 221 7393

charlie.schuh@colliers.com

BRE #01992259

**CHAD MCCARDELL**

559 256 0157

chad.mccardell@colliers.com

BRE #01313658

**COLLIERS INTERNATIONAL**  
7485 N. Palm Avenue, #110  
Fresno, California 93711  
[www.colliers.com/fresno](http://www.colliers.com/fresno)  
559 221 1271



# LOTS FOR SALE/LEASE OR BUILD-TO-SUIT

Fresno, California



# PALM LAKES BUSINESS PARK



## Park Information

<b>Water:</b>	In street
<b>Sewer:</b>	In street
<b>Zoning:</b>	IL (Indust. Light)

## Features

- Centrally Located just north of Fresno Yosemite International Airport
- 1.6 miles from North Bound/ South Bound Highway 168 via Shields Avenue
- Developer will Build-to-Suit
- Flexible Parcel Sizes
- Concrete Tilt/Block Construction Preferred
- Dakota Avenue Traffic Counts: 12,125 ADT



## Contact Us:

**BUK WAGNER**

559 256 2451

[buk.wagner@colliers.com](mailto:buk.wagner@colliers.com)

BRE #01296746

**CHARLIE SCHUH**

559 221 7393

[charlie.schuh@colliers.com](mailto:charlie.schuh@colliers.com)

BRE #01992259

**CHAD MCCARDELL**

559 256 0157

[chad.mccardell@colliers.com](mailto:chad.mccardell@colliers.com)

BRE #01313658

**COLLIERS INTERNATIONAL**

7485 N. Palm Avenue, #110

Fresno, California 93711

[www.colliers.com/fresno](http://www.colliers.com/fresno)

559 221 1271

This document has been prepared by Colliers International for advertising and general information only. Colliers International makes no guarantees, representations or warranties of any kind, expressed or implied, regarding the information including, but not limited to, warranties of content, accuracy and reliability. Any interested party should undertake their own inquiries as to the accuracy of the information. Colliers International excludes unequivocally all inferred or implied terms, conditions and warranties arising out of this document and excludes all liability for loss and damages arising there from. This publication is the copyrighted property of Colliers International and/or its licensor(s). ©2018. All rights reserved.