

FOR LEASE > OFFICE/MEDICAL

2008 General Booth Blvd | Virginia Beach, VA 23454



## CONTACT

**Sharon Holmstrom**

+1 757 441 3636

Sharon.holmstrom@colliers.com



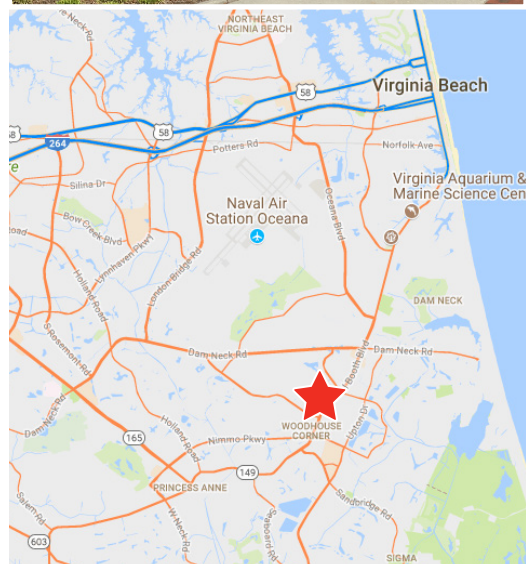
COLLIERS INTERNATIONAL  
500 E Main Street  
Suite 808  
Norfolk, VA 23510  
www.colliers.com/norfolk

## PROPERTY FEATURES

- Population over 104,000 within 15 minutes
- Large monument signage available
- Located in the sought after Red Mill General Booth corridor
- 2,150 - 4,300 SF available
- Lease rate: \$18.00/SF, net of electric/water

DEMOGRAPHIC FACTS	1 mile	3 mile	5 mile
POPULATION	11,518	52,690	99,869
DAYTIME POPULATION	7,590	17,777	50,270
AVG HH INCOME	\$117,954	\$118,098	\$112,324
TRAFFIC COUNTS	General Booth Blvd- ±32,409		

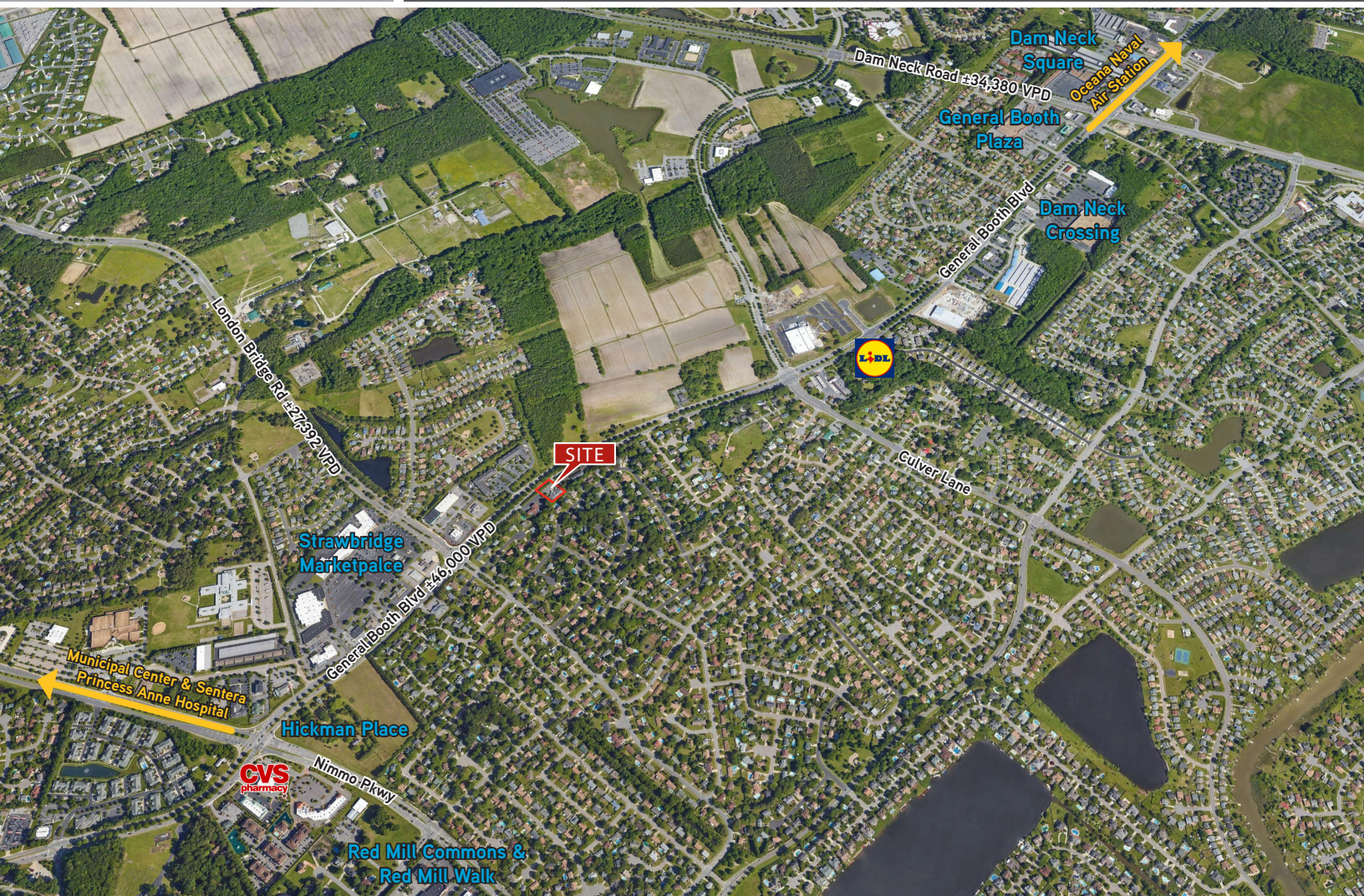
Accelerating success.





FOR LEASE >

## General Booth Medical Center

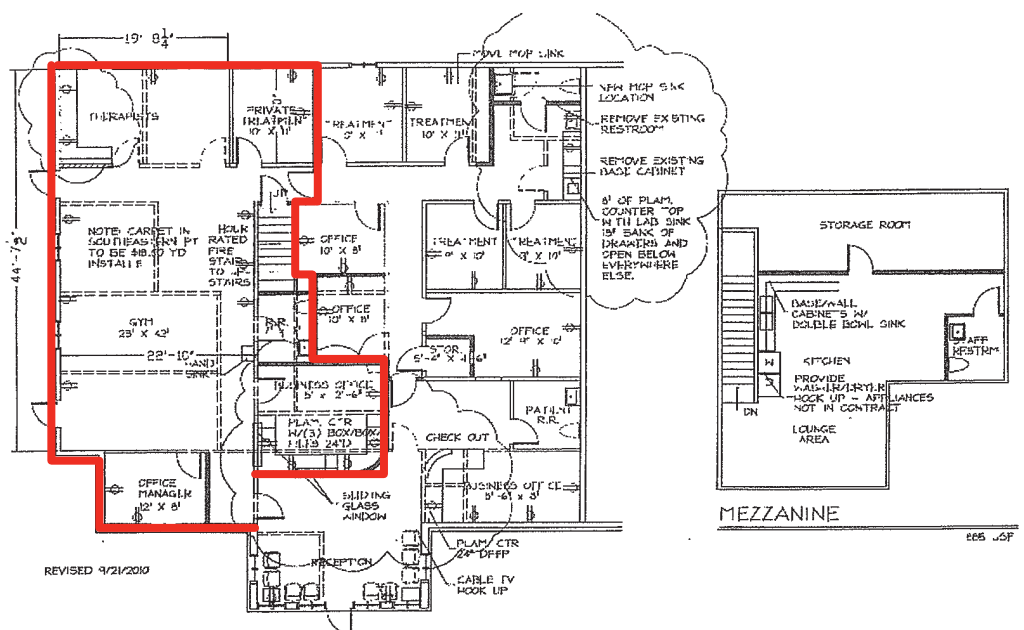


## CONTACTS

Sharon Holmstrom  
+1 757 441 3636  
sharon.holmstrom@colliers.com



COLLIERS INTERNATIONAL  
500 E Main Street  
Suite 808  
Norfolk, VA 23510  
www.colliers.com/norfolk



The information contained herein was obtained from sources, believed reliable, makes no guarantees, warranties or representations as to the completeness or accuracy thereof. The presentation of this property is submitted subject to errors, omissions, change of price or conditions prior to sale or lease, or withdrawal without notice. GeneralBoothBlvd\_2800\_Lease rev 4-10-2018