

3,272± SF OFFICE FOR LEASE > KEYS CROSSING

# 429 Roper Mountain Road

BUILDING 100, GREENVILLE, SC 29615



## Office Suite for Lease

- > 3,272± SF office space available
- > Conveniently located near I-385 and I-85 facing Roper Mountain Rd.
- > New Office Park
- > NEWLY AVAILABLE
- > Dedicated reception area and entrance
- > Large flexible common area for work stations
- > 8 individual offices and large conference room
- > Break room
- > Parking Ratio: 2.85 spaces per 1,000 SF with additional parking nearby
- > **LEASE RATE: \$17.25/SF NNN**

## Contact Us

RICHARD BARRETT, MCR  
864 527 5448 DIRECT  
864 297 4950 MAIN  
[ro.barrett@colliers.com](mailto:ro.barrett@colliers.com)

BRANNAN HUDSON  
864 527 5443 DIRECT  
864 297 4950 MAIN  
[brannan.hudson@colliers.com](mailto:brannan.hudson@colliers.com)

COLLIERS INTERNATIONAL  
55 E. Camperdown Way, Suite 200  
Greenville, South Carolina 29601  
[www.colliers.com/southcarolina](http://www.colliers.com/southcarolina)

3,272± SF OFFICE FOR LEASE > KEYS CROSSING

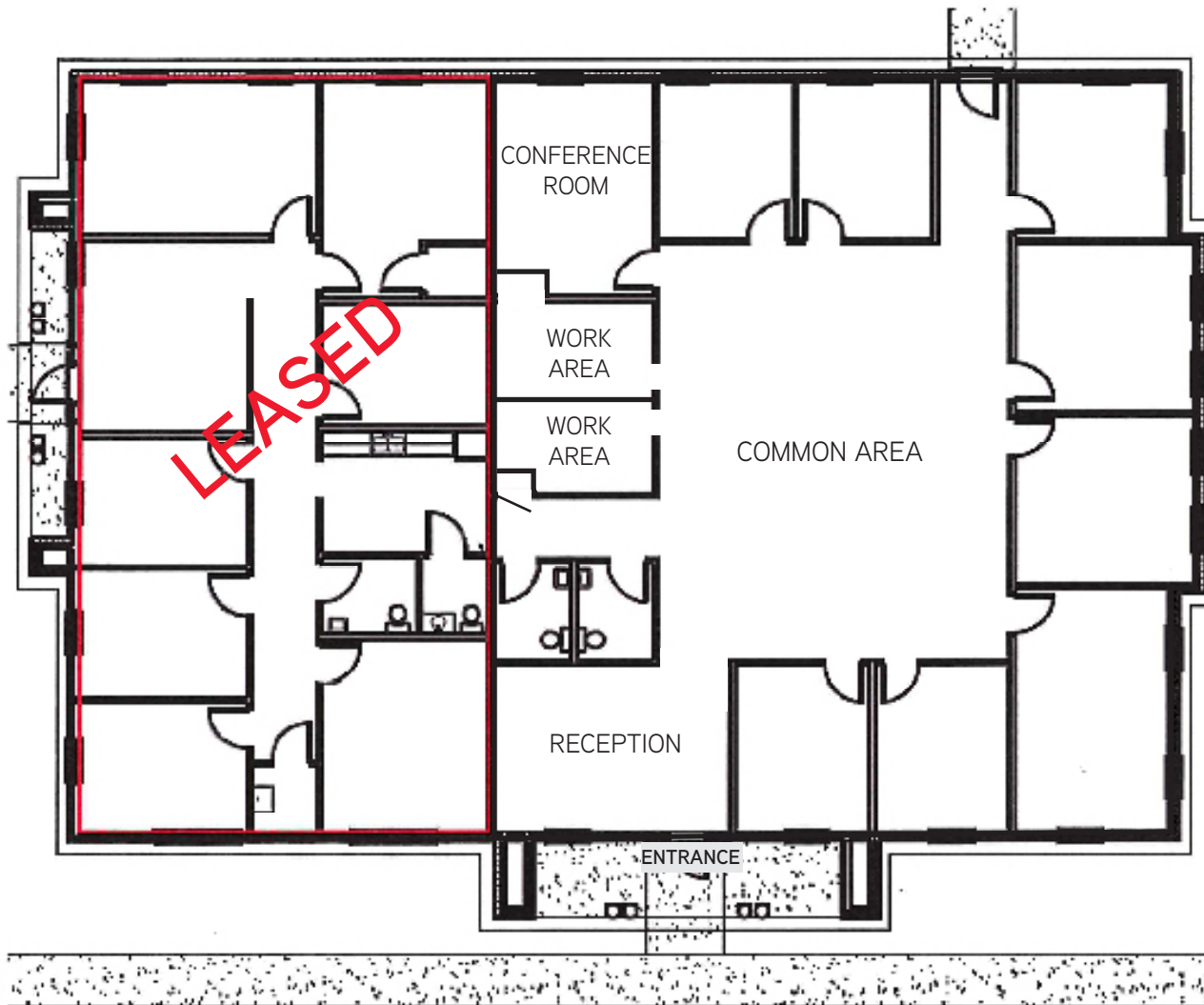


# 429 Roper Mountain Road

BUILDING 100, GREENVILLE, SC 29615

## FLOORPLAN

Well-designed for growing practices or other professional office users.



Office is well appointed with restrooms, break room, conference room, storage and reception area. The property is ready for occupancy and is conveniently located near both I-385 and I-85.



3,272± SF OFFICE FOR LEASE > KEYS CROSSING



# 429 Roper Mountain Road

BUILDING 100, GREENVILLE, SC 29615



COMMON AREA



OFFICE



OFFICE



CONFERENCE ROOM



BREAK ROOM

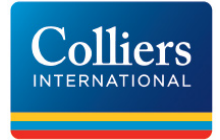


OFFICE



3,272± SF OFFICE FOR LEASE > KEYS CROSSING

# 429 Roper Mountain Road



BUILDING 100, GREENVILLE, SC 29615



## GREENVILLE, SC FAST FACTS

- Greenville is one of the fastest growing areas in South Carolina. Greenville MSA population in 2015 is 850,965 - the most populous in the state.
- With a revitalized downtown listed as one of the top 10 small downtowns in America, Greenville draws visitors and new businesses alike.
- The Roper Mountain area has a thriving office and retail climate, along with the Roper Mountain Science Center, one of the area's best planetariums.
- With the proximity to both I-385 and I-85, the Roper Mountain Road area is an ideal location for expanding or starting a business.

RICHARD BARRETT, MCR  
864 527 5448 DIRECT  
864 297 4950 MAIN  
ro.barrett@colliers.com

BRANNAN HUDSON  
864 527 5443 DIRECT  
864 297 4950 MAIN  
brannan.hudson@colliers.com

COLLIERS INTERNATIONAL  
55 E. Camperdown Way, Suite 200  
Greenville, South Carolina 29601  
www.colliers.com/southcarolina