



Office For Lease

Lincoln Place Office Park

3520 - 3564 Lincoln Ave. | Ogden, UT

Now Available!

- Class B Office Space
- Zoned PUD Office/Professional
- On-site management
- On-site security
- Ample parking
- Good lighting at night
- Convenient freeway access
- Close to Downtown Ogden and Riverdale retail area
- Competitive lease rates and flexible terms

Asking Price:

\$17.40

PSF Full Service

(Utilities/Janitorial services included)

Colliers

Welcome to Lincoln Place

Professional suites in a spacious, well-maintained enclave of office space. Various sizes available, most featuring reception areas, conference rooms and private offices.

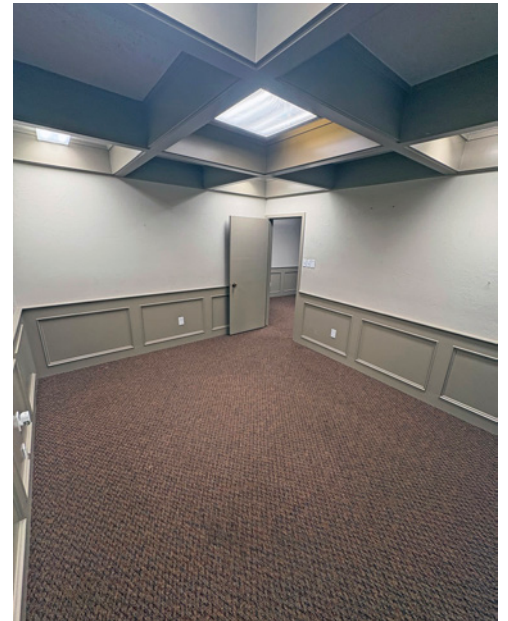
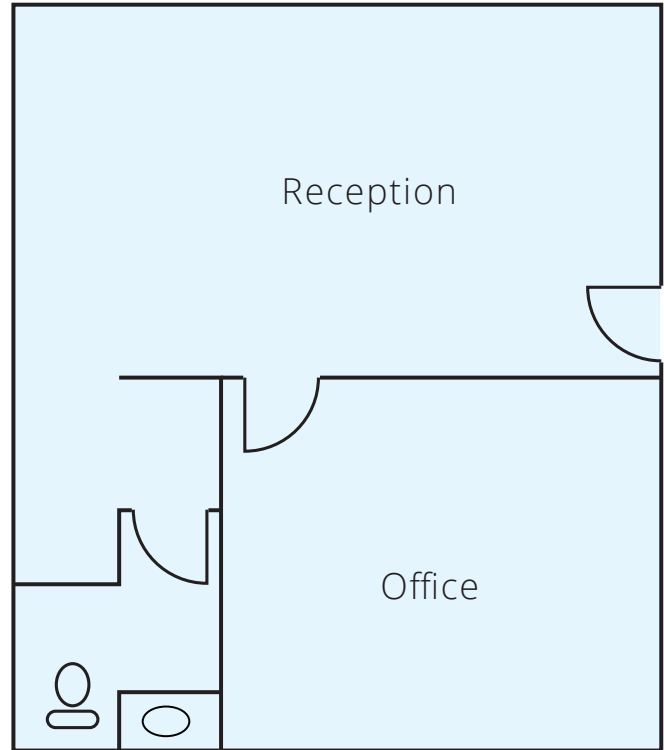
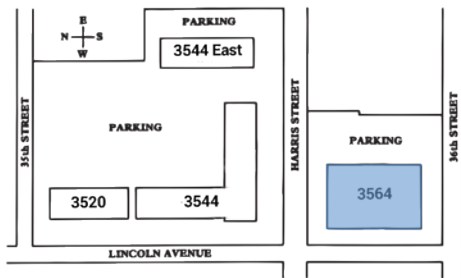
Lincoln Place provides convenient freeway access, and is located near Downtown Ogden, Newgate Mall and Riverdale Road which offers retailers including Costco, restaurants, convenience stores and much more.



Building 3564 Suite 2A

Suite Features

- 500 SF
- One Private Office
- Reception area / large open area
- Restroom





Colliers
 6440 S. Millrock Dr., Suite 500
 Salt Lake City, UT 84121
 Main: +1 801 947 8300
 colliers.com

Don L. Enlow, Sior
 Executive Vice President
 +1 801 560 3551
 don.enlow@colliers.com

Marcy Pitman
 Branch Broker
 +1 801 947 8330
 marcy.pitman@colliers.com

This document has been prepared by Colliers International for advertising and general information only. Colliers International makes no guarantees, representations or warranties of any kind, expressed or implied, regarding the information including, but not limited to, warranties of content, accuracy and reliability. Any interested party should undertake their own inquiries as to the accuracy of the information. Colliers International excludes unequivocally all inferred or implied terms, conditions and warranties arising out of this document and excludes all liability for loss and damages arising there from. This publication is the copyrighted property of Colliers International and/or its licensor(s). ©2025. All rights reserved.