

FOR SALE >



COMMERCIAL LAND - 0.93 Acres

CALIFORNIA BUSINESS ROUTE 41, NORTH OF AVENUE 11, MADERA, CA



- > **LOCATION:** Midblock on California Business Route 41, North of Avenue 11, Madera, California
- > **THE PROPERTY:** Approximately 0.93 acres (40,647 sf) APN: 049-271-005-000
- > **PRICE:** **\$225,000 (\$5.54 PSF)**
- > **ZONING:** CRM/MHA
- > **TERMS:** All Cash.
- > **COMMENTS:** Excellent Highway 41 frontage property with high visibility & exposure. Property is located 5 minutes north of Fresno and close to commercial businesses along Highway 41. Also located within minutes of Children's Hospital Central California. In addition, McCaffrey Homes is under construction just north of this site offering 121 new home lots. The first phase is "Santera-at-Riverstone", followed by "Ive-at-Riverstone"!

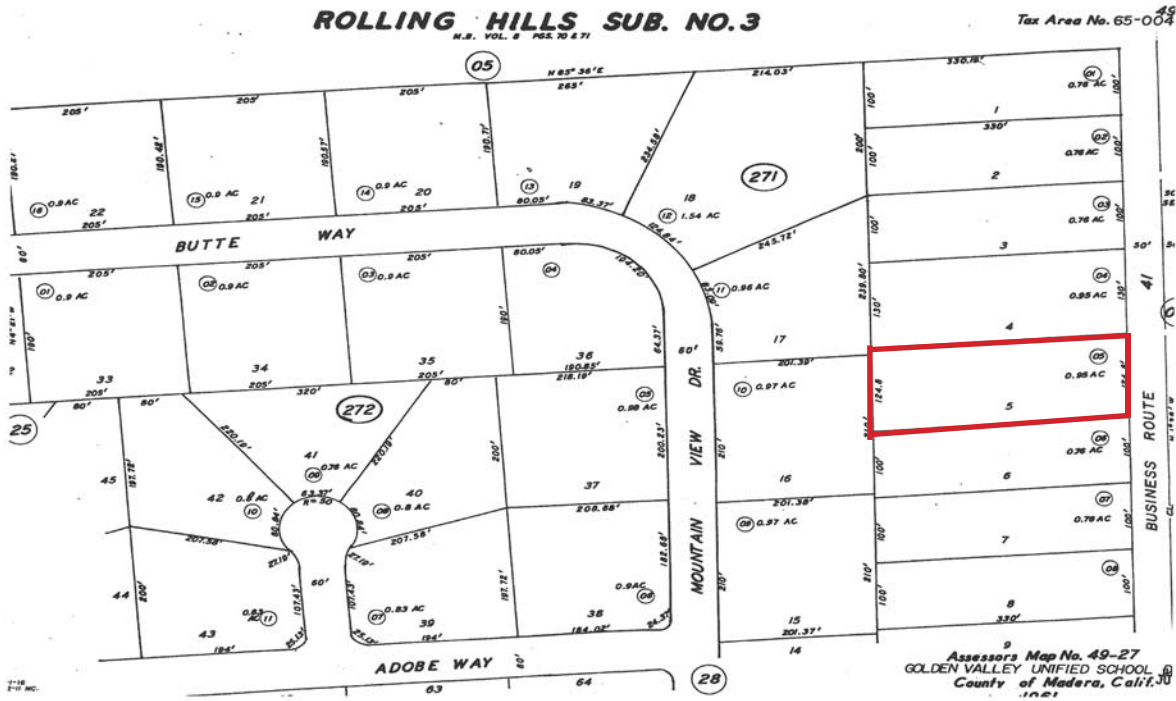
GERALD CROSS
559 221 1271 | EXT. 103
FRESNO, CA
gerald.cross@colliers.com
BRE #00992292

COLLIERS INTERNATIONAL
7485 N. Palm Avenue, Suite 110
Fresno, CA 93711
www.colliers.com/fresno

FOR SALE >

Commercial Land - 0.93 Acres - 40,647 SF

CALIFORNIA BUSINESS ROUTE 41, NORTH OF AVENUE 11, MADERA, CA



- Excellent Highway Access, Visibility & Exposure
- Proximate to Children's Hospital Central California
- Located on the Business corridor and adjacent to Rolling Hills Estate Homes

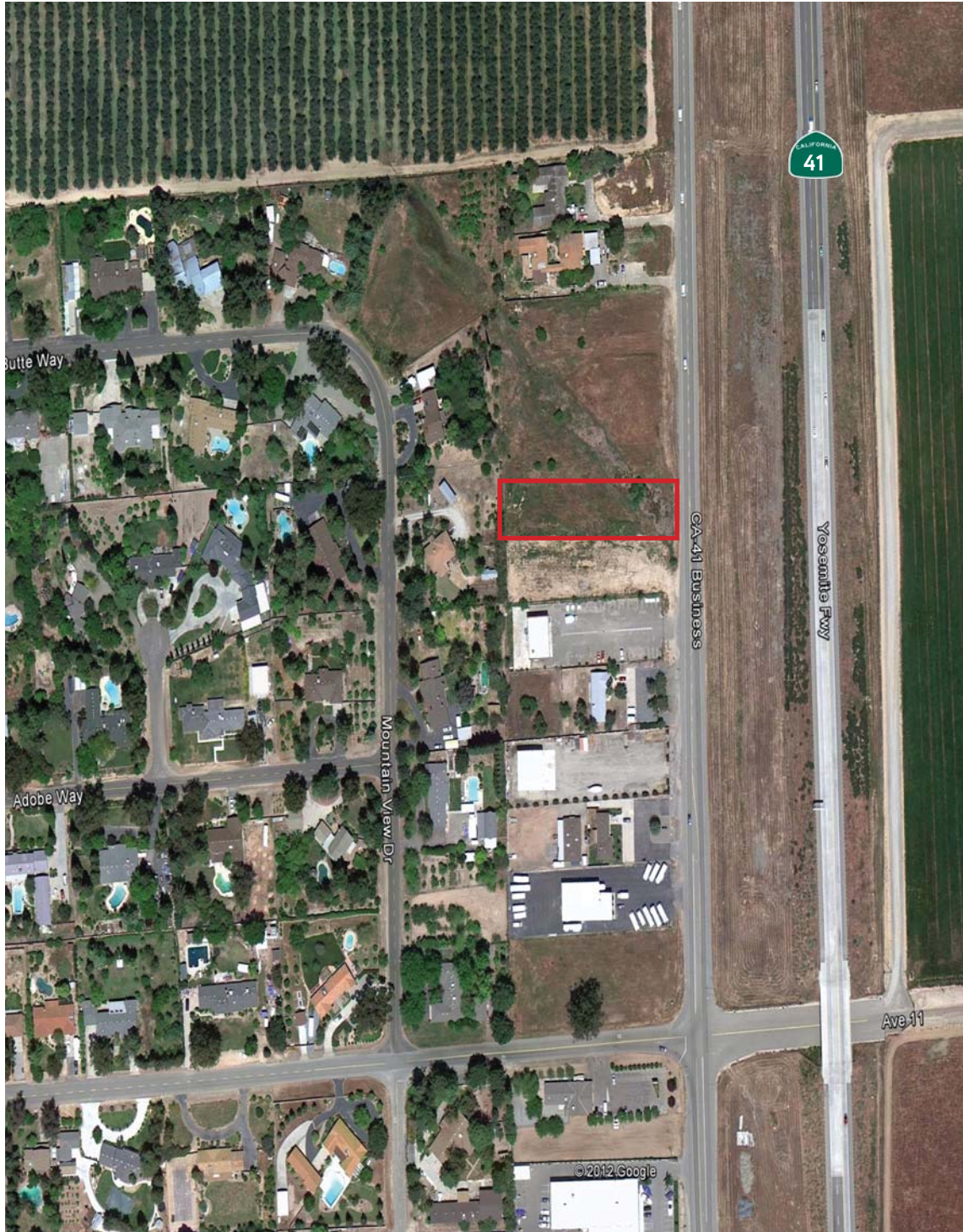
This document has been prepared by Colliers International for advertising and general information only. Colliers International makes no guarantees, representations or warranties of any kind, expressed or implied, regarding the information including, but not limited to, warranties of content, accuracy and reliability. Any interested party should undertake their own inquiries as to the accuracy of the information. Colliers International excludes unequivocally all inferred or implied terms, conditions and warranties arising out of this document and excludes all liability for loss and damages arising there from. This publication is the copyrighted property of Colliers International and/or its licensor(s). ©2016. All rights reserved.



FOR SALE >

Commercial Land - 0.93 Acres - 40,647 SF

CALIFORNIA BUSINESS ROUTE 41, NORTH OF AVENUE 11, MADERA, CA



Contact Us

GERALD CROSS

559 221 1271 | EXT. 103

FRESNO, CA

gerald.cross@colliers.com

BRE #00992292

COLLIERS INTERNATIONAL
7485 N. Palm Avenue, Suite 110
Fresno, CA 93711
www.colliers.com/fresno

This document has been prepared by Colliers International for advertising and general information only. Colliers International makes no guarantees, representations or warranties of any kind, expressed or implied, regarding the information including, but not limited to, warranties of content, accuracy and reliability. Any interested party should undertake their own inquiries as to the accuracy of the information. Colliers International excludes unequivocally all inferred or implied terms, conditions and warranties arising out of this document and excludes all liability for loss and damages arising there from. This publication is the copyrighted property of Colliers International and/or its licensor(s). ©2016. All rights reserved.

