

FOR LEASE > OFFICE SPACE

Capitol Station

1330 LADY STREET, COLUMBIA, SOUTH CAROLINA 29201



Capitol Station > Office Space

Capitol Station is centrally located within Columbia's Central Business District (CBD). The property is only one block from the State Capitol Complex and within walking distance of the popular Main Street restaurant and retail corridor.

Building Amenities

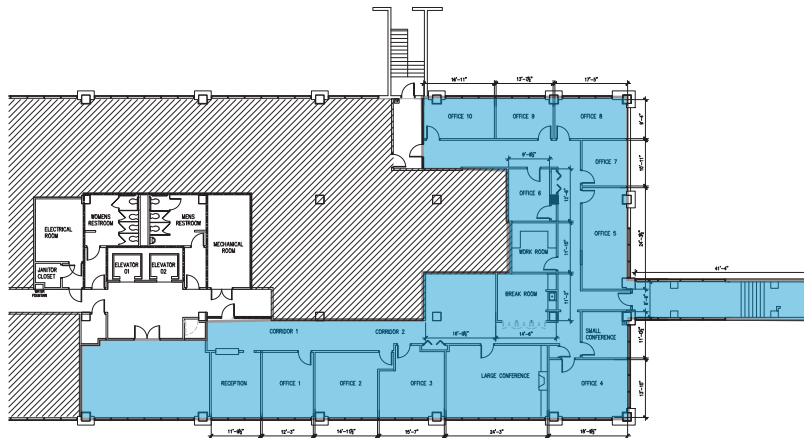
- > Full service leases include all building services, inclusive of utilities and janitorial service
- > 900 space, private attached garage for the use of tenants and visitors, offers direct access to each floor of the building. 4.5 per 1,000 SF
- > Availabilities: 4th Floor $\pm 6,310$ RSF
5th Floor $\pm 6,208$ RSF
- > Street level monument signage opportunity on Lady Street at the building's main entrance
- > The Capitol Station branch of the U.S. Postal Service is located on the ground level.
- > Rental Rate: \$18.50/SF

TOMMY JOHNSON
803 401 4228
tommy.johnson@colliers.com

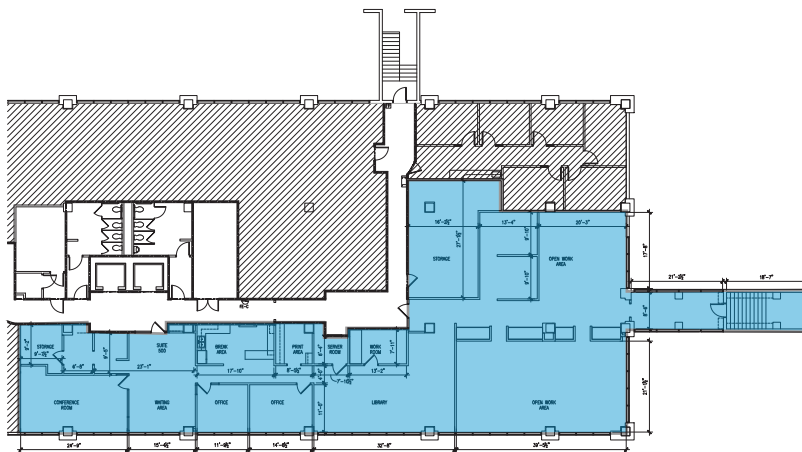
HUNTER SUGGS
803 401 4245
hunter.suggs@colliers.com

COLLIERS INTERNATIONAL
1301 Gervais Street, Suite 600
Columbia, SC 29201
www.colliers.com/columbia

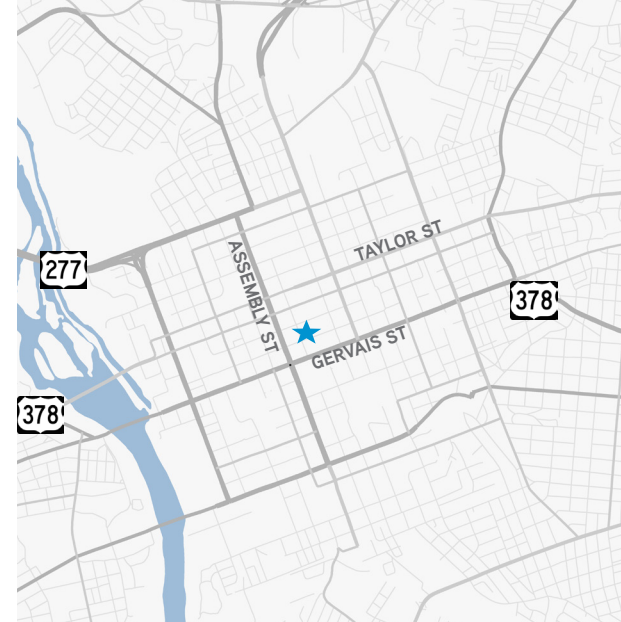
Capitol Station › Floor Plans



SUITE 400 ±6,311 RSF



SUITE 500 ±6,208 RSF



Contact Us

TOMMY JOHNSON

803 401 4228

tommy.johnson@colliers.com

HUNTER SUGGS

803 401 4245

hunter.suggs@colliers.com

COLLIERS INTERNATIONAL
1301 Gervais Street, Suite 600
Columbia, SC 29201

www.colliers.com/columbia

This document has been prepared by Colliers International for advertising and general information only. Colliers International makes no guarantees, representations or warranties of any kind, expressed or implied, regarding the information including, but not limited to, warranties of content, accuracy and reliability. Any interested party should undertake their own inquiries as to the accuracy of the information. Colliers International excludes unequivocally all inferred or implied terms, conditions and warranties arising out of this document and excludes all liability for loss and damages arising there from. This publication is the copyrighted property of Colliers International and/or its licensor(s). ©2012. All rights reserved.

