

FOR LEASE

# Murrayhill Professional Suites

14780 SW OSPREY DRIVE BEAVERTON, OREGON 97007

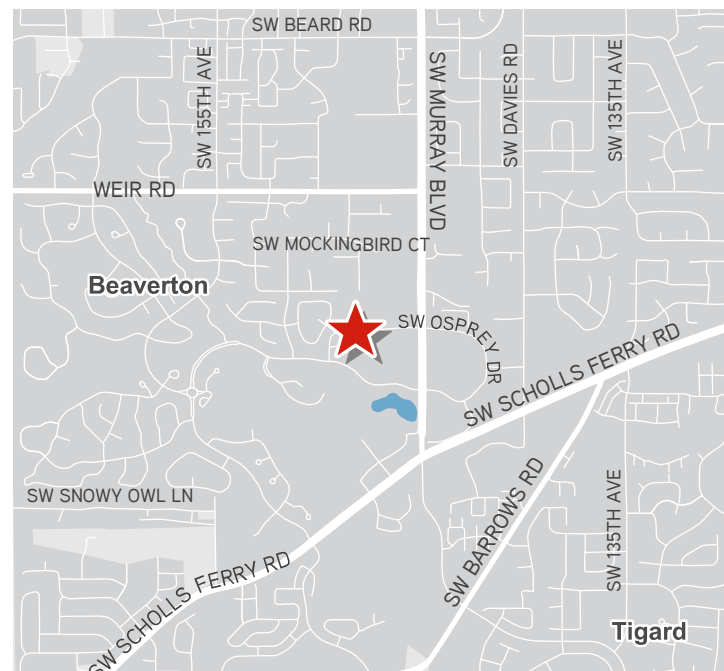


## THE BUILDING

- Built in 1988
- 149,000 SF Mixed-Use Center
- Conveniently located in Murrayhill
- Ample parking
- Access to many major retailers

## AVAILABILITIES - \$24.00/SF Full Service

- Suite 241 3,520 SF
- Suite 255 616 SF
- Suite 285 1,752 SF
- Suite 310 415 SF
- Suite 365 2,499 SF
- Suite 817 6,000 SF



JOE BEEHLER  
503 499 0065  
PORTLAND, OR  
[joe.beehler@colliers.com](mailto:joe.beehler@colliers.com)

GREG GONZALEZ  
503 499 0060  
PORTLAND, OR  
[greg.gonzalez@colliers.com](mailto:greg.gonzalez@colliers.com)

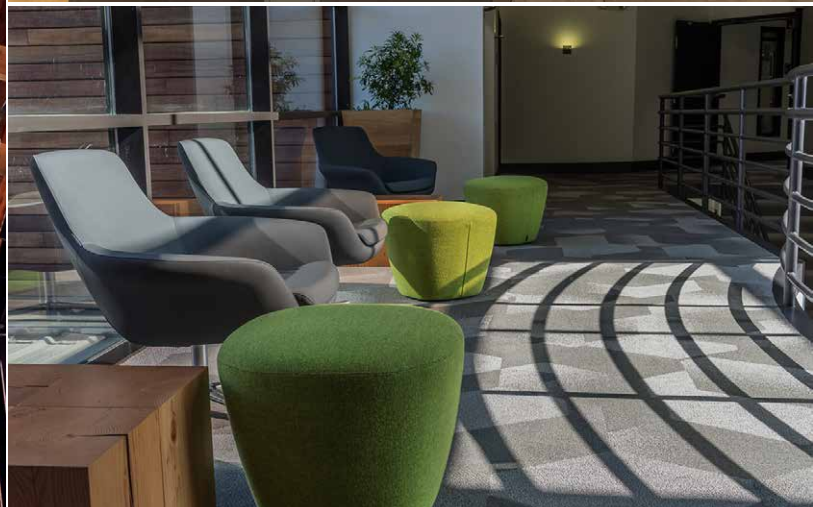
COLLIERS INTERNATIONAL  
851 SW Sixth Avenue, Suite 1200  
Portland, OR 97204  
[www.colliers.com](http://www.colliers.com)



FOR LEASE

# Murrayhill Professional Suites

14780 SW OSPREY DRIVE BEAVERTON, OR 97007



This document has been prepared by Colliers International for advertising and general information only. Colliers International makes no guarantees, representations or warranties of any kind, expressed or implied, regarding the information including, but not limited to, warranties of content, accuracy and reliability. Any interested party should undertake their own inquiries as to the accuracy of the information. Colliers International excludes unequivocally all inferred or implied terms, conditions and warranties arising out of this document and excludes all liability for loss and damages arising there from. This publication is the copyrighted property of Colliers International and/or its licensor(s). ©2016. All rights reserved. 10/19/17

