

FOR LEASE > NEW OFFICE / FLEX PARK DEVELOPMENT

Century Business Park

ROUTE 19 & EHRMAN ROAD, CRANBERRY TOWNSHIP, PA 16066



SAMPSON·MORRIS GROUP



NEW OFFICE / FLEX DEVELOPMENT ON ROUTE 19 IN CRANBERRY TOWNSHIP

COMPLETED: 26,800 SF

- > Shell condition
- > Subdividable to 5,000 SF
- > Single story 16' clear construction
- > Two dock high doors
- > Drive-in doors available

PROPOSED: 31,300 SF

PROPOSED: 15,400 SF

Site Information

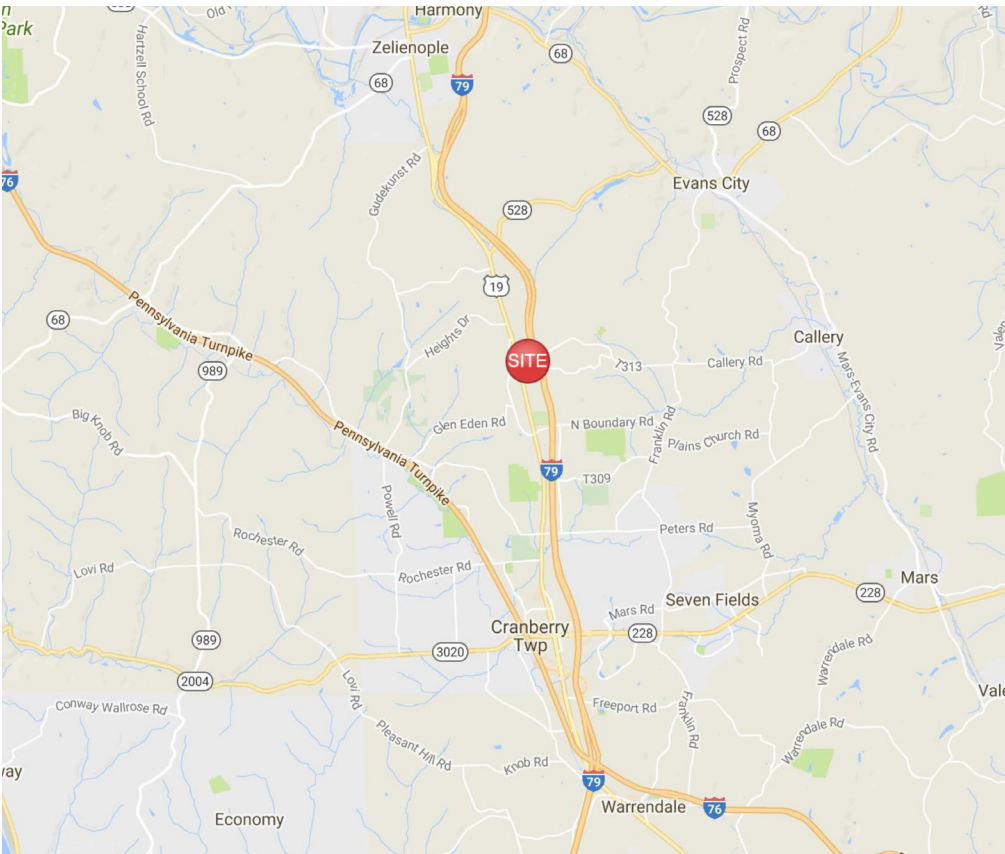
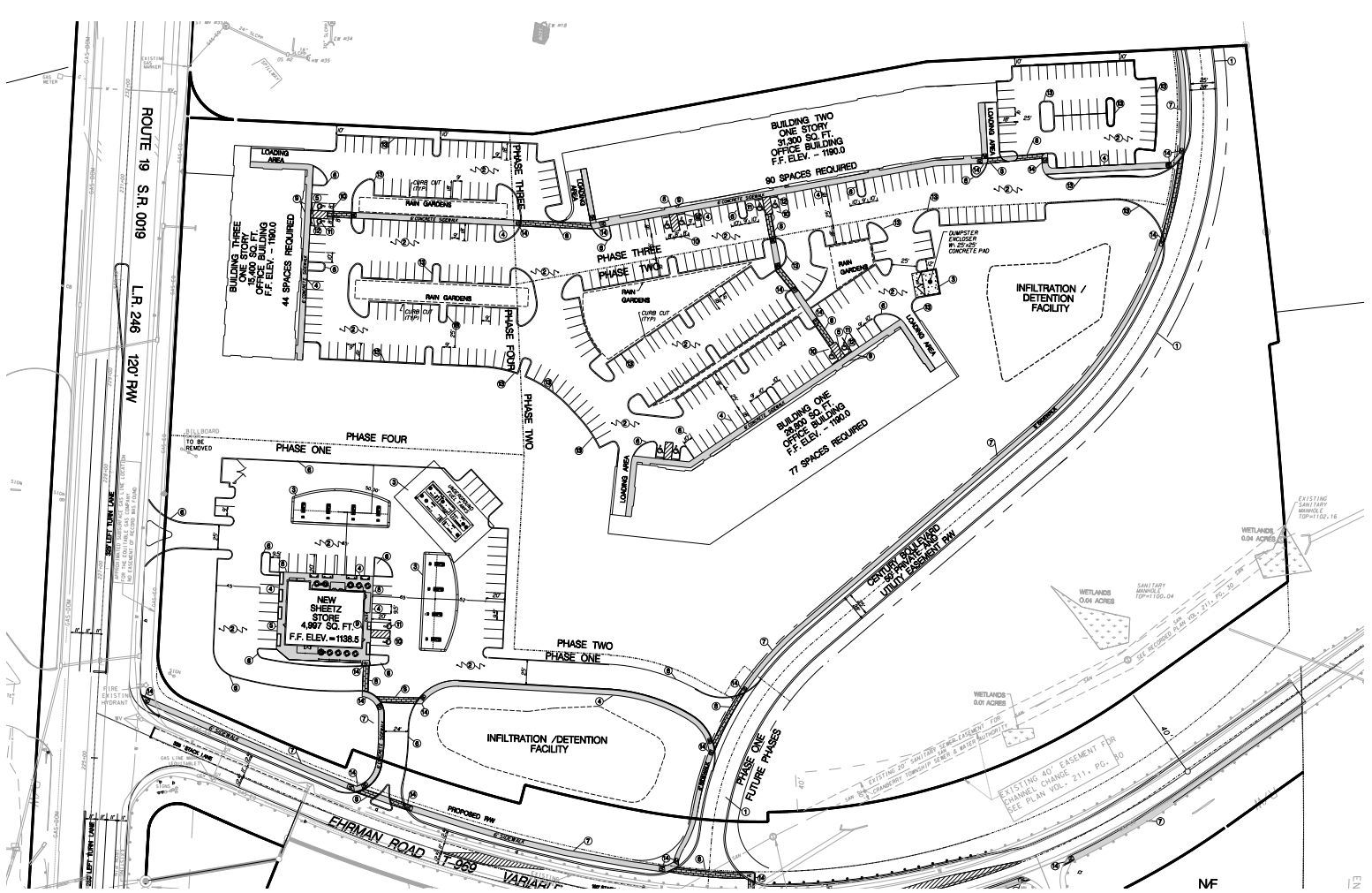
- > Five (5) parking spaces per 1,000 SF
- > No add on factor
- > Visibility from I-79 and Route 19 with signage potential
- > Great accessibility to I-79 and I-76



JOHN BILYAK SIOR, CCIM
PRINCIPAL | PITTSBURGH
INDUSTRIAL BROKERAGE
412 321 4200 | EXT. 209
john.bilyak@colliers.com

MAMADOU BALDÉ JD
VICE PRESIDENT | PITTSBURGH
INDUSTRIAL BROKERAGE
412 321 4200 | EXT. 224
mamadou.balde@colliers.com

COLLIERS INTERNATIONAL | PITTSBURGH
Two Gateway Center
603 Stanwix Street, Suite 125
Pittsburgh, PA 15222
www.colliers.com/pittsburgh



Contact Us

JOHN BILYAK SIOR, CCIM
PRINCIPAL | PITTSBURGH
INDUSTRIAL BROKERAGE
412 321 4200 | EXT. 209
john.bilyak@colliers.com

MAMADOU BALDÉ JD
VICE PRESIDENT | PITTSBURGH
INDUSTRIAL BROKERAGE
412 321 4200 | EXT. 224
mamadou.balde@colliers.com

COLLIERS INTERNATIONAL | PITTSBURGH
Two Gateway Center, Suite 125
603 Stanwix Street
Pittsburgh, PA 15222
www.colliers.com/pittsburgh

The information contained herein has been given to us by the owner of the property or other sources we deem reliable. We have no reason to doubt its accuracy, but we do not guarantee it. All information should be verified prior to purchase or lease.

