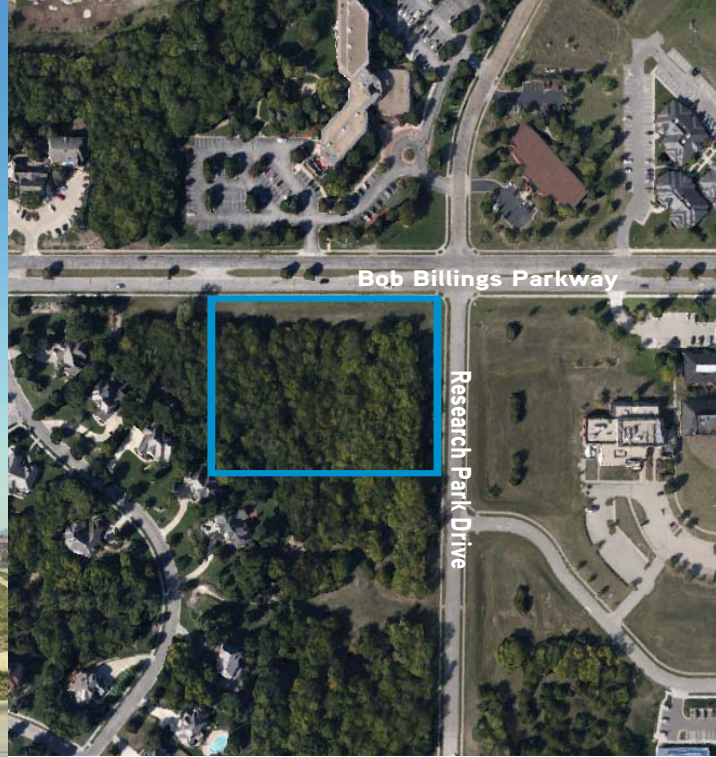


FOR SALE > DEVELOPMENT LAND



# 5015 Bob Billings Parkway

LAWRENCE, KANSAS 66049



## Property Description

This is a rare corner lot with an excellent location at the corner of Research Park Drive and Bob Billings Parkway, the gateway to the University of Kansas. The 2.6 acre lot has been approved for 25,000 square feet of building or buildings. The adjacent lot is also for sale and could be combined for a total of 4 acres.

## Property Highlights

- > Lot size: 2.6 acres
- > Zoning: IBP – Industrial/Business Park District
- > Sale price: \$475,000.00

AGENT: MARILYN BITTENBENDER, SIOR, CCIM  
+1 785 865 5100 | EXT. 105  
LAWRENCE, KS  
marilyn.bittenbender@colliers.com

COLLIERS INTERNATIONAL  
805 New Hampshire, Suite C  
Lawrence, KS 66044  
www.colliers.com

This document has been prepared by Colliers International for advertising and general information only. Colliers International makes no guarantees, representations or warranties of any kind, expressed or implied, regarding the information including, but not limited to, warranties of content, accuracy and reliability. Any interested party should undertake their own inquiries as to the accuracy of the information. Colliers International excludes unequivocally all inferred or implied terms, conditions and warranties arising out of this document and excludes all liability for loss and damages arising there from. This publication is the copyrighted property of Colliers International and/or its licensor(s). © 2016. All rights reserved.