



FOR LEASE

663 W. 4330 S.

Murray, Utah 84123

PROPERTY HIGHLIGHTS

- Clear Height: 24'
- Grade Level Doors: Two (2) 12' x 14'
- ½ Acre Secure Yard
- Zoning: MG
- Less than a mile from the 4500 South exit off I-15
- Outdoor patio
- Easy access to Jordan River Parkway Trail

Call for pricing

Available

9,414 SF

4,388 SF Warehouse

5,026 SF Office

CONTACT US

Jeremy Terry

Vice President
+1 801 671 9349
jeremy.terry@colliers.com

Tom Freeman, SIOR

Vice Chair
+1 801 947 8309
tom.freeman@colliers.com

Travis Healey, SIOR

Vice Chair
+1 801 947 8335
travis.healey@colliers.com

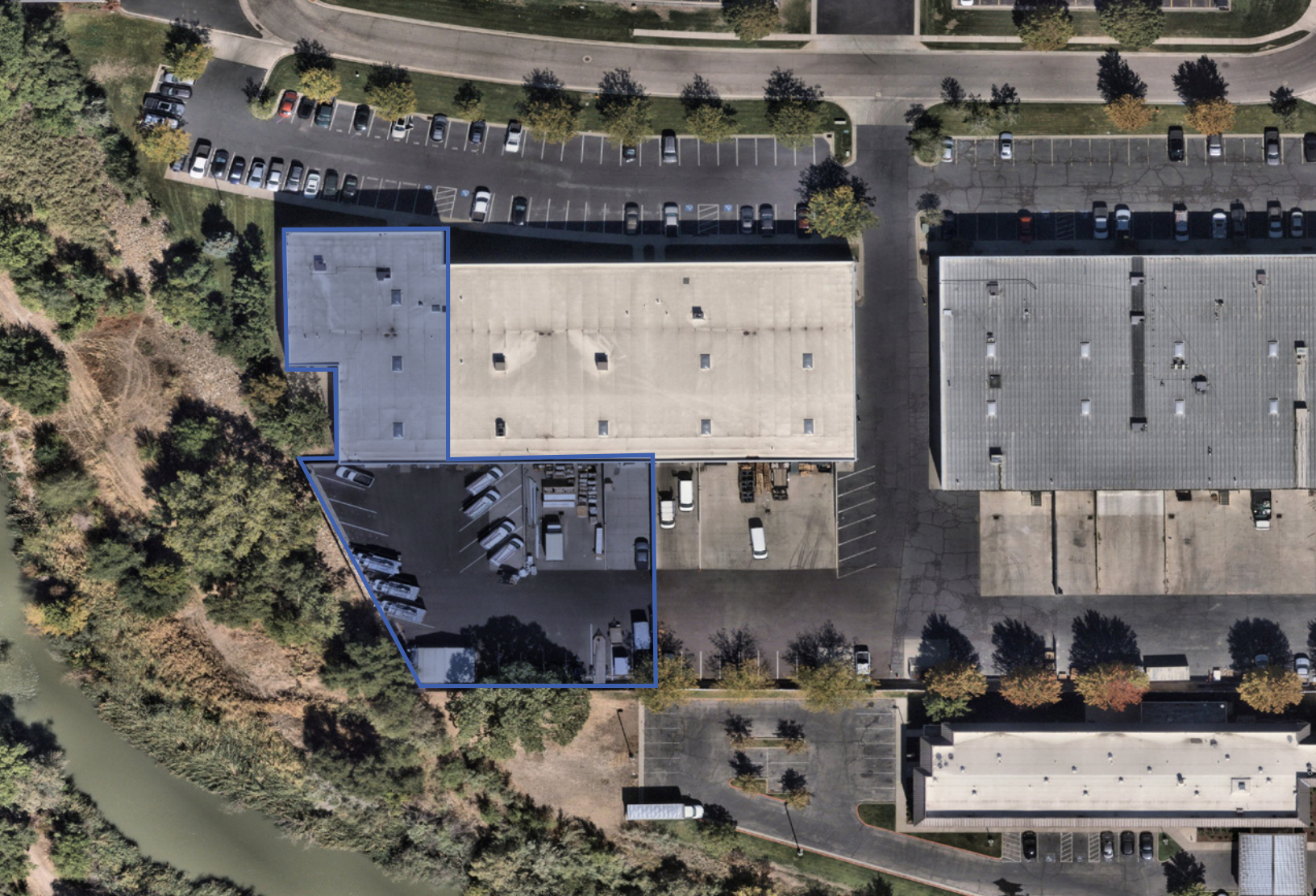
Jeremy Jensen, SIOR, CCIM

Executive Vice President
+1 801 441 1207
jeremy.jensen@colliers.com

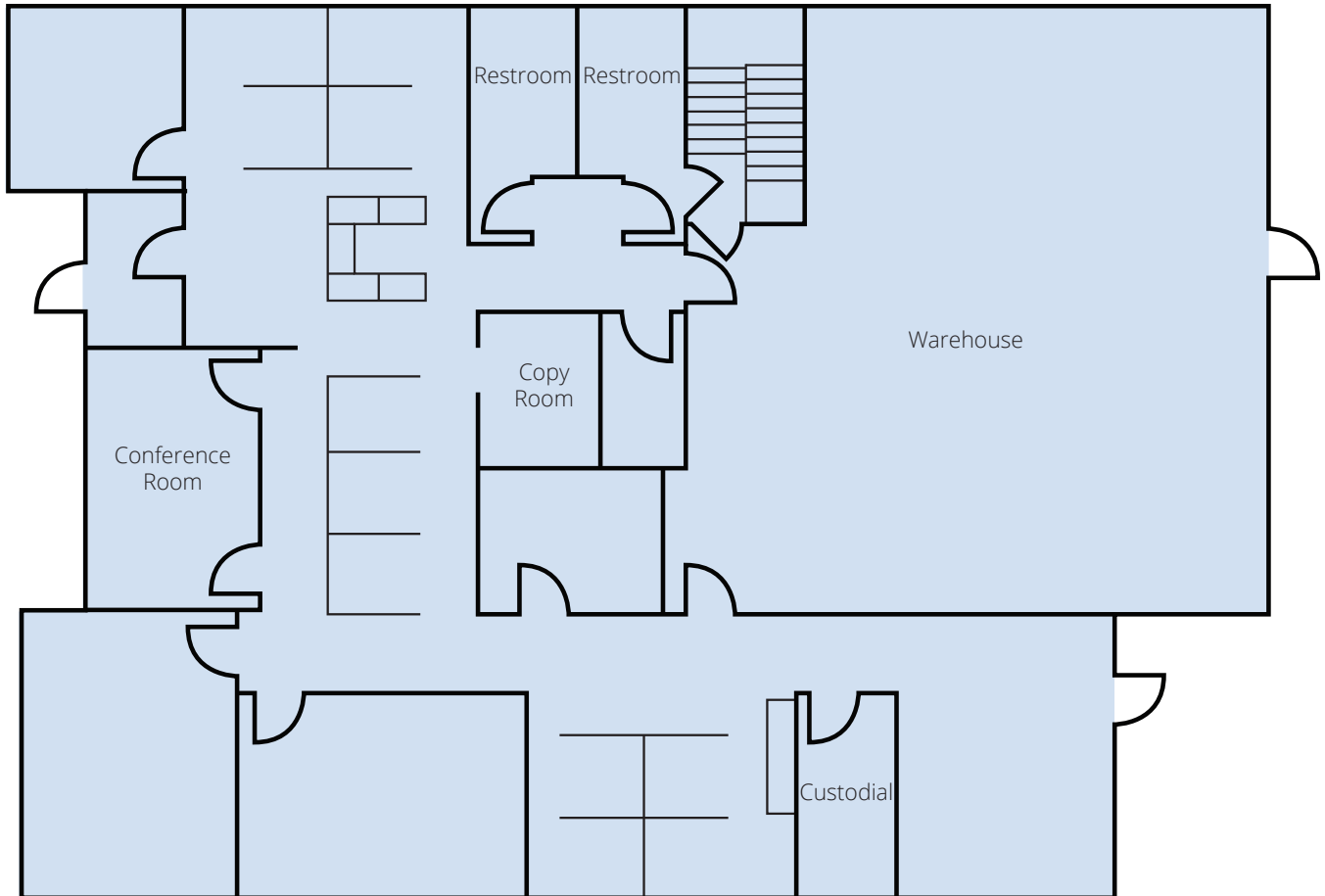
FOR LEASE

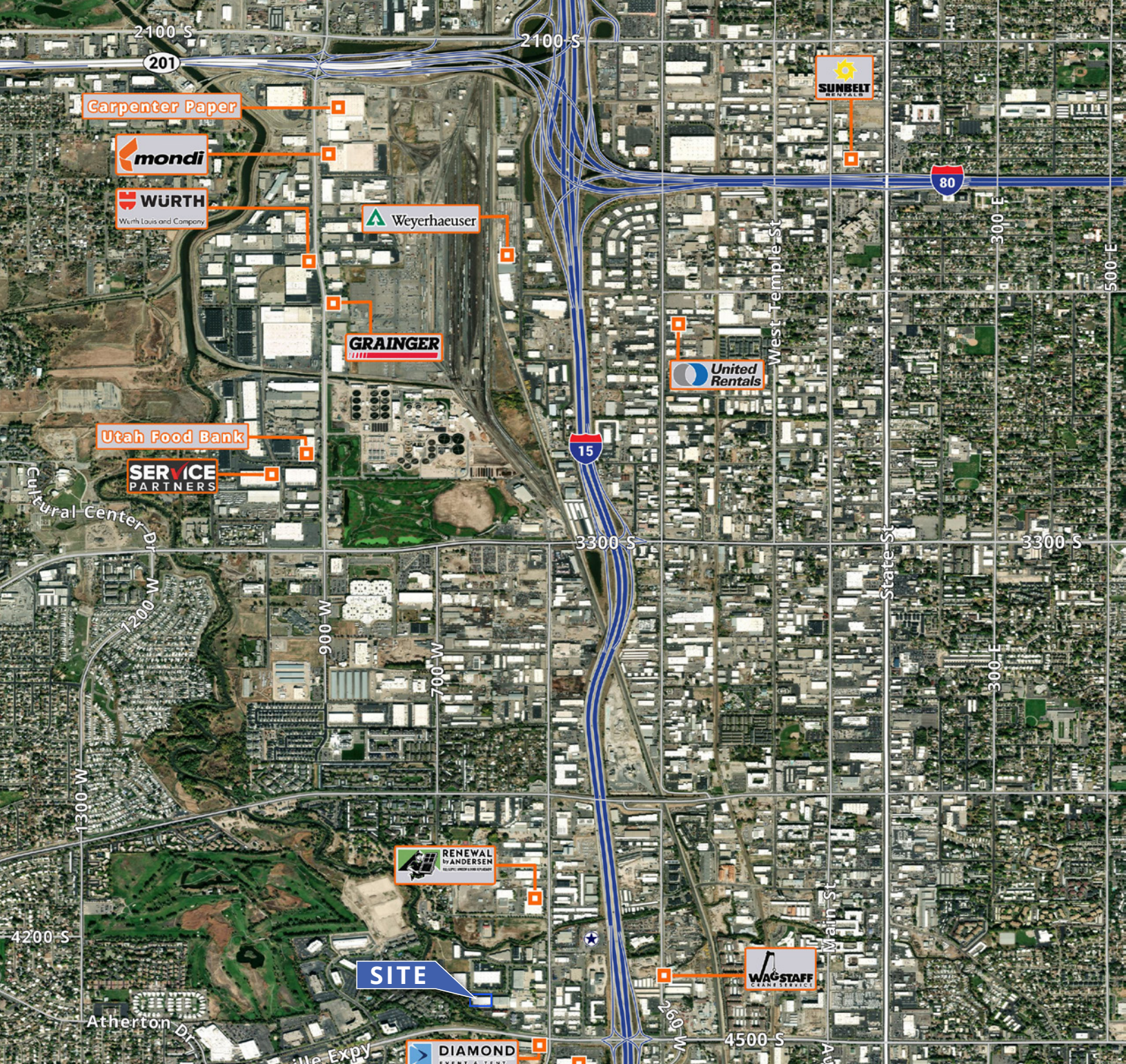
663 W. 4330 S.

Murray, Utah 84123



FLOOR PLAN





CONTACT US

Jeremy Terry
 Vice President
 +1 801 671 9349
 jeremy.terry@colliers.com

Tom Freeman, SIOR
 Vice Chair
 +1 801 947 8309
 tom.freeman@colliers.com

Travis Healey, SIOR
 Vice Chair
 +1 801 947 8335
 travis.healey@colliers.com

Jeremy Jensen, SIOR, CCIM
 Executive Vice President
 +1 801 441 1207
 jeremy.jensen@colliers.com



Colliers
 111 S. Main St., Suite 2200
 Salt Lake City, UT 84111
 Main: +1 801 947 8300
 colliers.com

This document has been prepared by Colliers International for advertising and general information only. Colliers International makes no guarantees, representations or warranties of any kind, expressed or implied, regarding the information including, but not limited to, warranties of content, accuracy and reliability. Any interested party should undertake their own inquiries as to the accuracy of the information. Colliers International excludes unequivocally all inferred or implied terms, conditions and warranties arising out of this document and excludes all liability for loss and damages arising there from. This publication is the copyrighted property of Colliers International and/or its licensor(s). ©2025. All rights reserved.