

FOR LEASE > OFFICE/ MEDICAL SPACE

8826 SANTA FE DRIVE

OVERLAND PARK, KS



PROPERTY HIGHLIGHTS

- > 342 to 3,146 SF available
- > Renovated common areas with new carpet, paint and ceiling tiles
- > Upgraded elevators
- > Located in downtown Overland Park
- > Aggressive market rental rates
- > 4 minutes to I-35 and 7 minutes to I-435
- > On-site ownership
- > Building conference room
- > Signage opportunity available
- > Office space available:
 - > Suite 100 - 1,204 SF
 - > Suite 110 - 2,031 SF
 - > Suite 150 - 2,993 SF
 - > Suite 165 - 342 SF
 - > Suite 170 - 3,146 SF
 - > Suite 219 - 745 SF
 - > Suite 312 - 1,729 SF

ROSS SIMPSON
+1 816 556 1157
KANSAS CITY, MO
ross.simpson@colliers.com

REAGAN O'TOOLE
+1 816 556 1120
KANSAS CITY, MO
reagan.otoole@colliers.com



FOR LEASE > OFFICE/MEDICAL SPACE

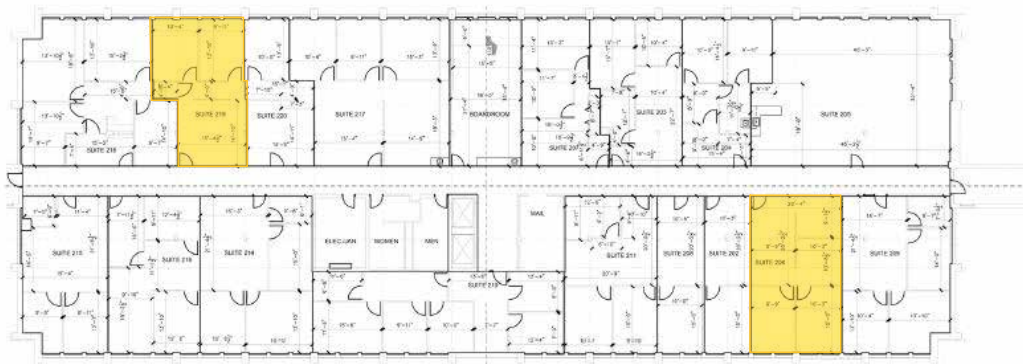
8826 SANTA FE DRIVE

OVERLAND PARK, KS

FLOOR PLANS



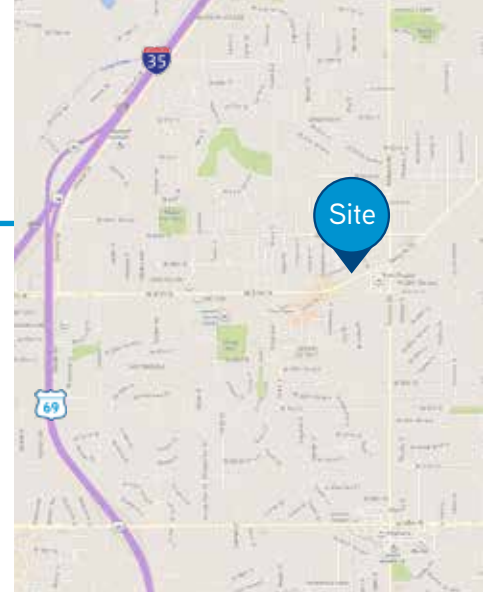
1ST FLOOR



2ND FLOOR



3RD FLOOR



CONTACT US

ROSS SIMPSON
+1 816 556 1157
KANSAS CITY, MO
ross.simpson@colliers.com

REAGAN O'TOOLE
+1 816 556 1120
KANSAS CITY, MO
reagan.otoole@colliers.com