

FOR LEASE > OFFICE/ MEDICAL SPACE

8826 SANTA FE DRIVE

OVERLAND PARK, KS



PROPERTY HIGHLIGHTS

- > 342 to 3,146 SF available
- > Renovated common areas with new carpet, paint and ceiling tiles
- > Upgraded elevators
- > Located in downtown Overland Park
- > Aggressive market rental rates
- > 4 minutes to I-35 and 7 minutes to I-435
- > On-site ownership
- > Building conference room
- > Signage opportunity available
- > Office space available:
 - > Suite 110 - 2,031 SF
 - > Suite 150 - 2,993 SF
 - > Suite 165 - 342 SF
 - > Suite 170 - 3,146 SF
 - > Suite 219 - 745 SF
 - > Suite 312 - 1,729 SF

ROSS SIMPSON
+1 816 556 1157
KANSAS CITY, MO
ross.simpson@colliers.com

REAGAN O'TOOLE
+1 816 556 1120
KANSAS CITY, MO
reagan.otoole@colliers.com



FOR LEASE > OFFICE/MEDICAL SPACE

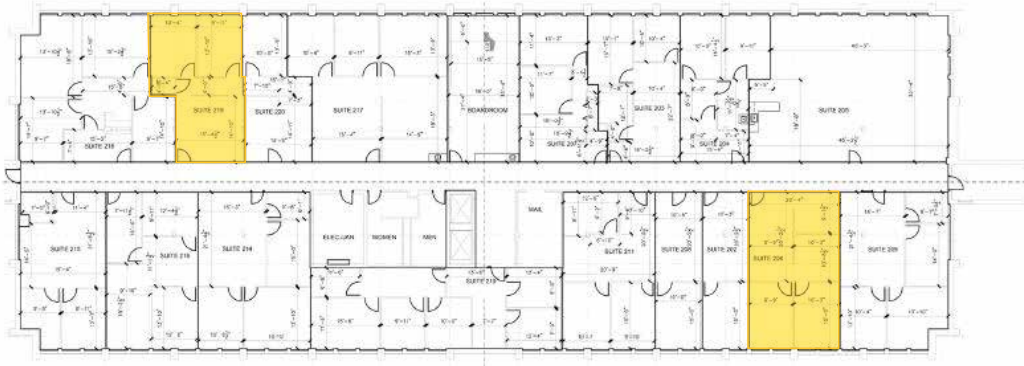
8826 SANTA FE DRIVE

OVERLAND PARK, KS

FLOOR PLANS



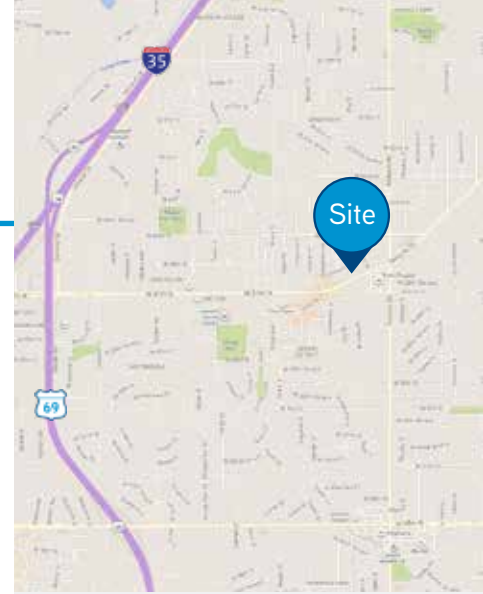
1ST FLOOR



2ND FLOOR



3RD FLOOR



CONTACT US

ROSS SIMPSON
+1 816 556 1157
KANSAS CITY, MO
ross.simpson@colliers.com

REAGAN O'TOOLE
+1 816 556 1120
KANSAS CITY, MO
reagan.otoole@colliers.com

This document has been prepared by Colliers International for advertising and general information only. Colliers International makes no guarantees, representations or warranties of any kind, expressed or implied, regarding the information including, but not limited to, warranties of content, accuracy and reliability. Any interested party should undertake their own inquiries as to the accuracy of the information. Colliers International excludes unequivocally all inferred or implied terms, conditions and warranties arising out of this document and excludes all liability for loss and damages arising there from. This publication is the copyrighted property of Colliers International and/or its licensor(s). ©2018. All rights reserved.

