

STRATEGIC CORNER LOCATION AT  
ROOSEVELT AVENUE AND LIPPMAN PLAZA

# FLUSHING QUEENS

136-61 ROOSEVELT AVENUE

TIMOTHY G. POND  
Real Estate Salesperson  
Associate Director  
**(212) 716-3780**  
timothy.pond@colliers.com

STEVE CHASANOFF  
Real Estate Associate Broker  
Executive Managing Director  
**(212) 716-3595**  
steve.chasanoff@colliers.com

ROBERT L. FREEDMAN  
Real Estate Associate Broker  
Chairman  
**(212) 716-3780**  
robertL.freedman@colliers.com

**Colliers**  
INTERNATIONAL



# FLUSHING QUEENS

136-61 ROOSEVELT AVENUE

## SPACE DETAILS

- GROUND: **2,500 SF**  
+ FULL BASEMENT WITH **10' CEILINGS**
- 10 – 15 YEARS TERM
- DIRECT LEASE
- SPACE HAS NOT BEEN AVAILABLE FOR 50 YEARS
- **MAJOR NATIONAL RETAILERS IN VICINITY:**  
SPRINT, MACYS, CVS, DUANE READE, WELLS FARGO, & CAPITAL ONE
- EXTREMELY HIGH VOLUME FOOT TRAFFIC
- FLAG SIGNAGE AVAILABLE

## RECENTLY CONCLUDED TRANSACTIONS

- HAI DI LAO HOTPOT
- ATELIER
- METRO CITY BANK
- HANOVER BANK
- SONIC DRIVE-IN







# FLUSHING QUEENS

136-61 ROOSEVELT AVENUE

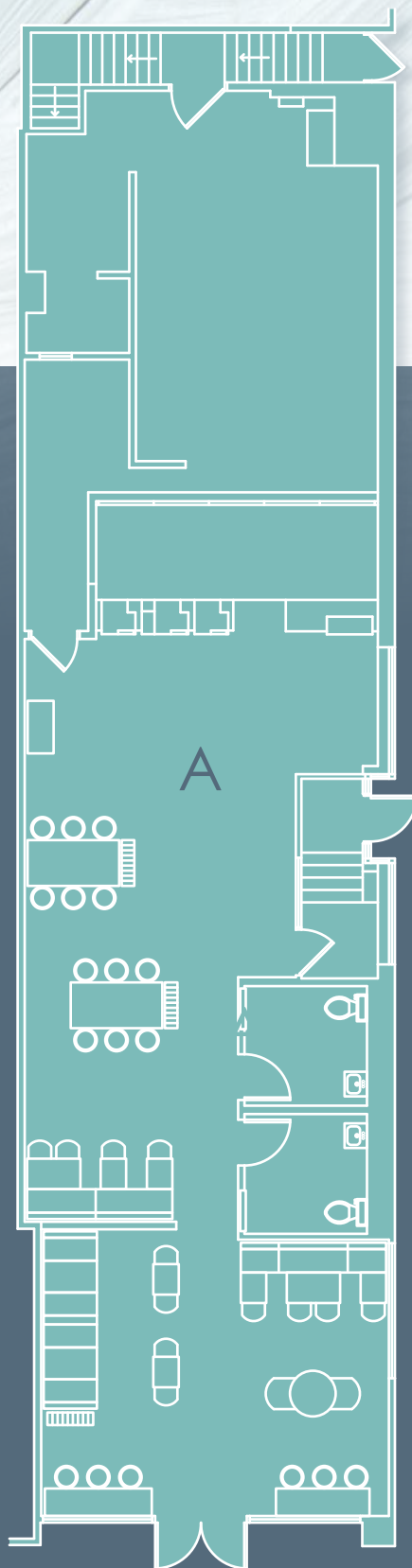
## FLOOR PLANS

### A

GROUND:  
2,500 SF

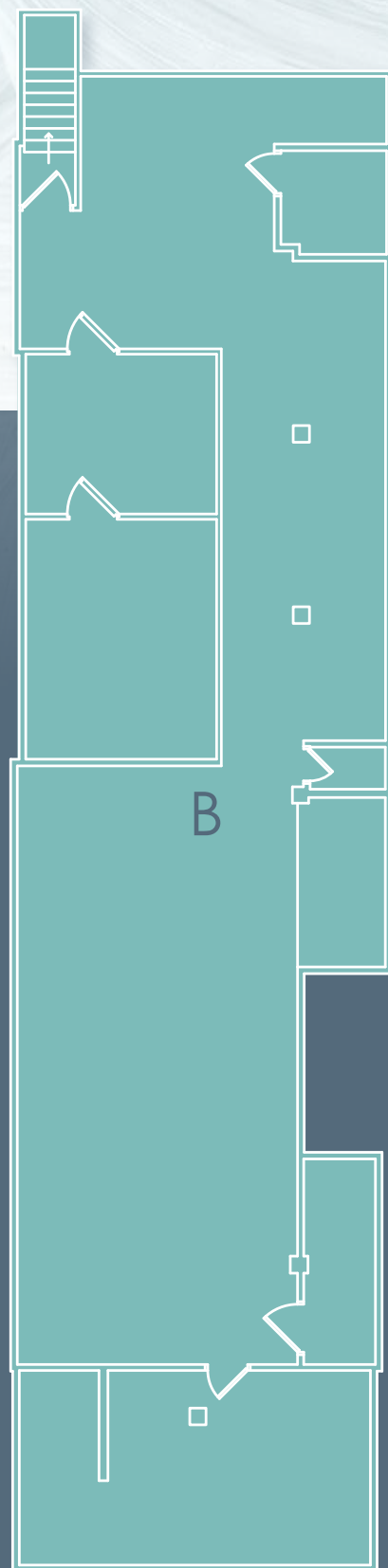
### B

CELLAR:  
**FULL BASEMENT**  
10' CEILINGS



LIPPMAN PLAZA

ROOSEVELT AVENUE



LIPPMAN PLAZA

ROOSEVELT AVENUE