



# Law Firm Layout with Great Views

The Commons at Renaissance  
2011 Renaissance Boulevard, King of Prussia, PA



- Two contiguous suites available at 3,575 SF & 3,805 SF for a total of 7,380 SF
- Ideal for professional uses
- Abundant parking available at 4 spaces per 1,000 SF
- Energy efficient HVAC systems with individual utility metering
- Park setting with landscaped jogging trails, picnic areas and beautiful pond
- Best in/out access in entire park - 1st right from main entrance
- Amenities abound - child care, hotels, retail & restaurants within minutes of site
- Served by SEPTA Bus Route 95
- Strong ownership - professional on-site management

FOR MORE INFORMATION,  
PLEASE CONTACT:

**SANDY RICHARDSON**

Senior Vice President

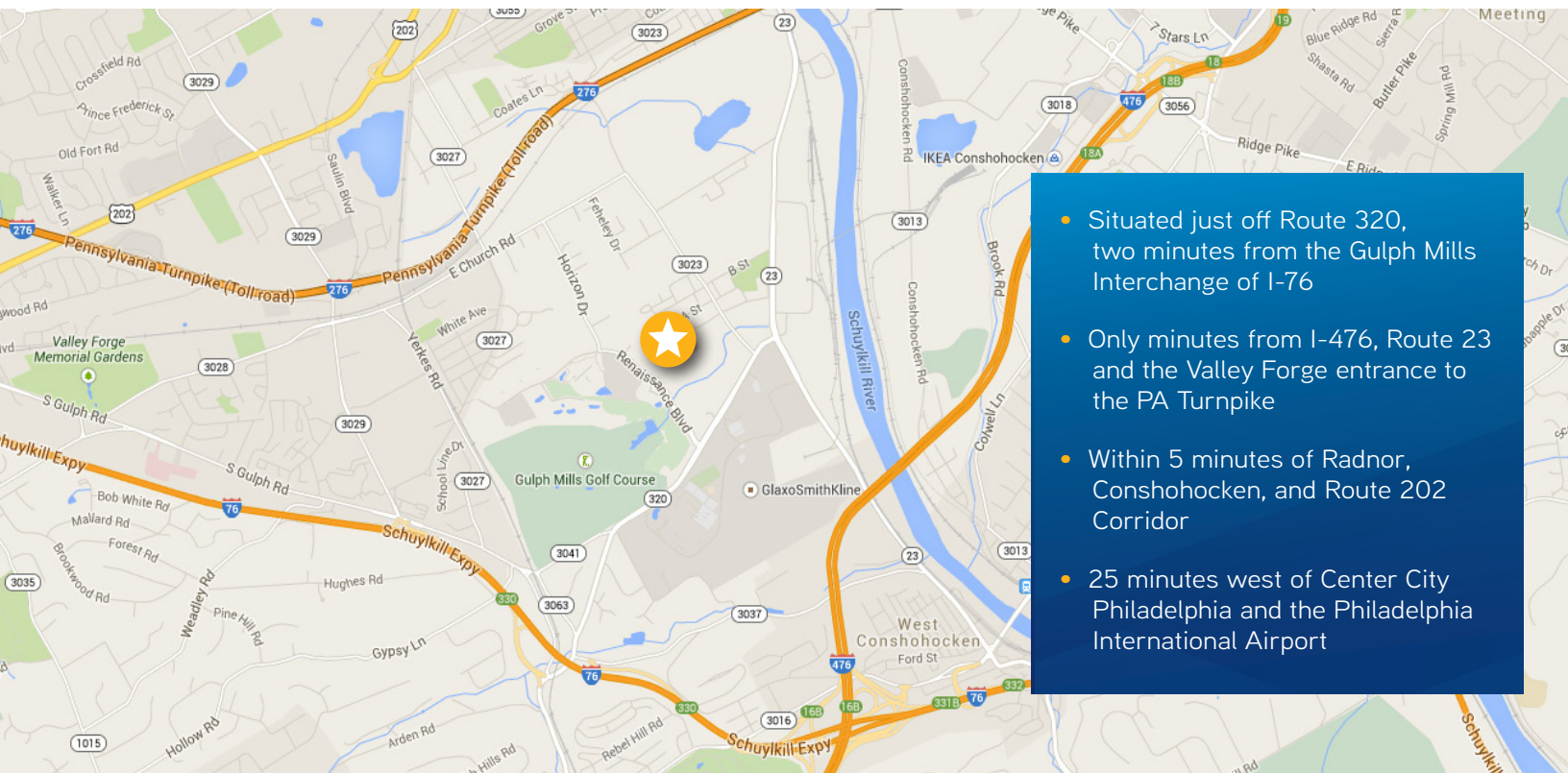
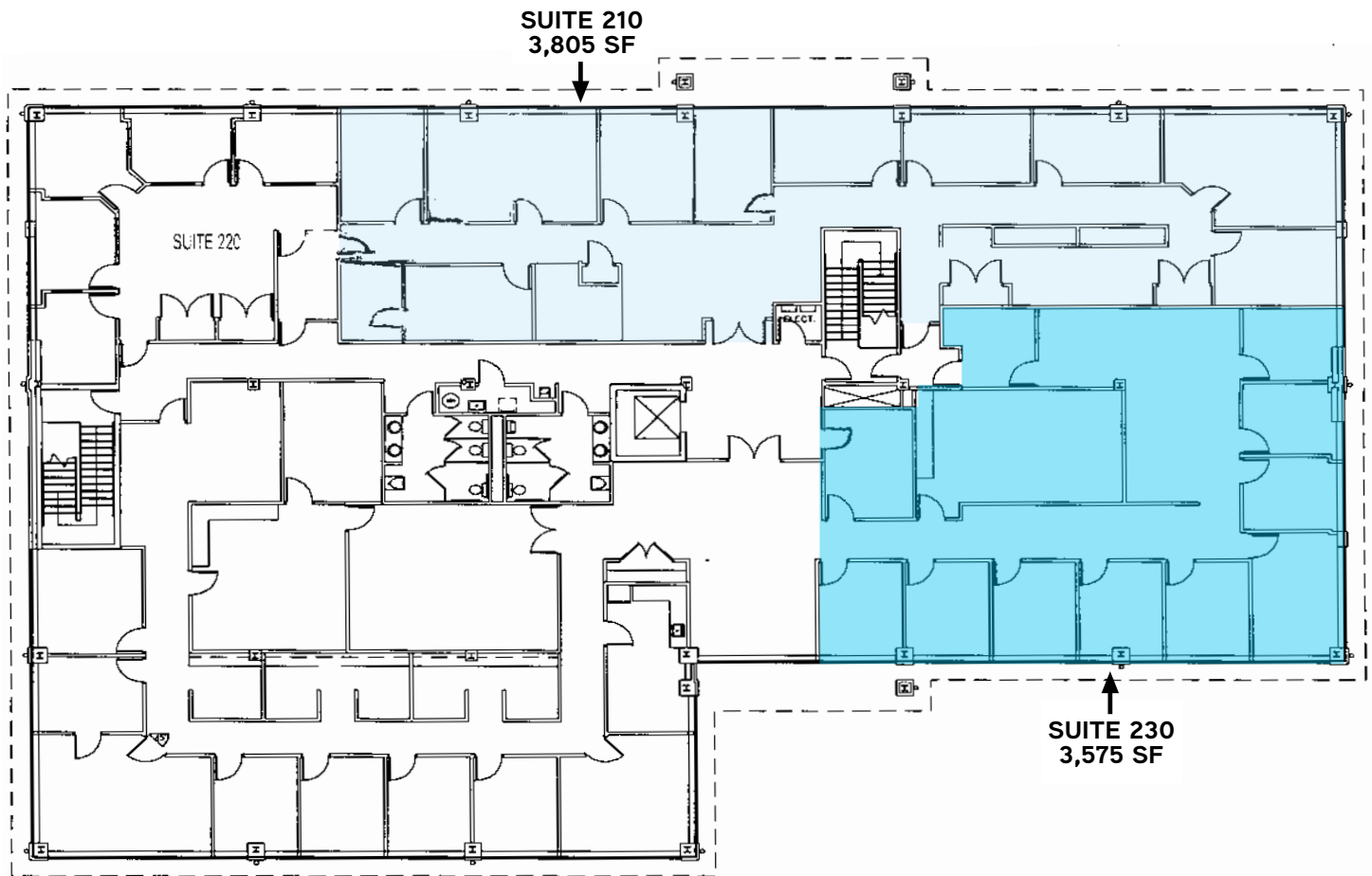
+1 215 928 7533

[sandy.richardson@colliers.com](mailto:sandy.richardson@colliers.com)





# 2011 Renaissance Boulevard, King of Prussia, PA



@colliersphilly



colliersphilly



colliers.com/philadelphia

The foregoing information was furnished to us by sources which we deem to be reliable, but no warranty or representation is made as to the accuracy thereof. Subject to correction of errors, omissions, change of price, prior sale or withdrawal from market without notice. The aerial image is intended to provide a general outline of the subject property. It is not a survey nor should it be relied upon for purposes of determining property lines or boundaries.

**COLLIERS INTERNATIONAL**  
Ten Penn Center  
1801 Market Street Street, Suite 550  
Philadelphia, PA 19103  
+1 215 925 4600

**Colliers**  
INTERNATIONAL