

FOR SALE > MULTIFAMILY

MIDTOWN APARTMENTS

680 W FOREST AVENUE | DETROIT, MICHIGAN



IN THE HEART OF MIDTOWN DETROIT

INVESTMENT HIGHLIGHTS

- 9,092 SF Established Apartment Community
- 8 Units: 6 Three Bedroom and 2 Two Bedroom
- 100% Occupied
- Located in Opportunity Zone
- Situated in Midtown

COLLIERS INTERNATIONAL
2 Corporate Drive | Suite 300
Southfield, Michigan 48076

[For More Information Call:](#)

TONY FAYNE
SENIOR ASSOCIATE
PHONE 248 540 1000 EXT 1608
EMAIL tony.fayne@colliers.com



colliers.com/detroit



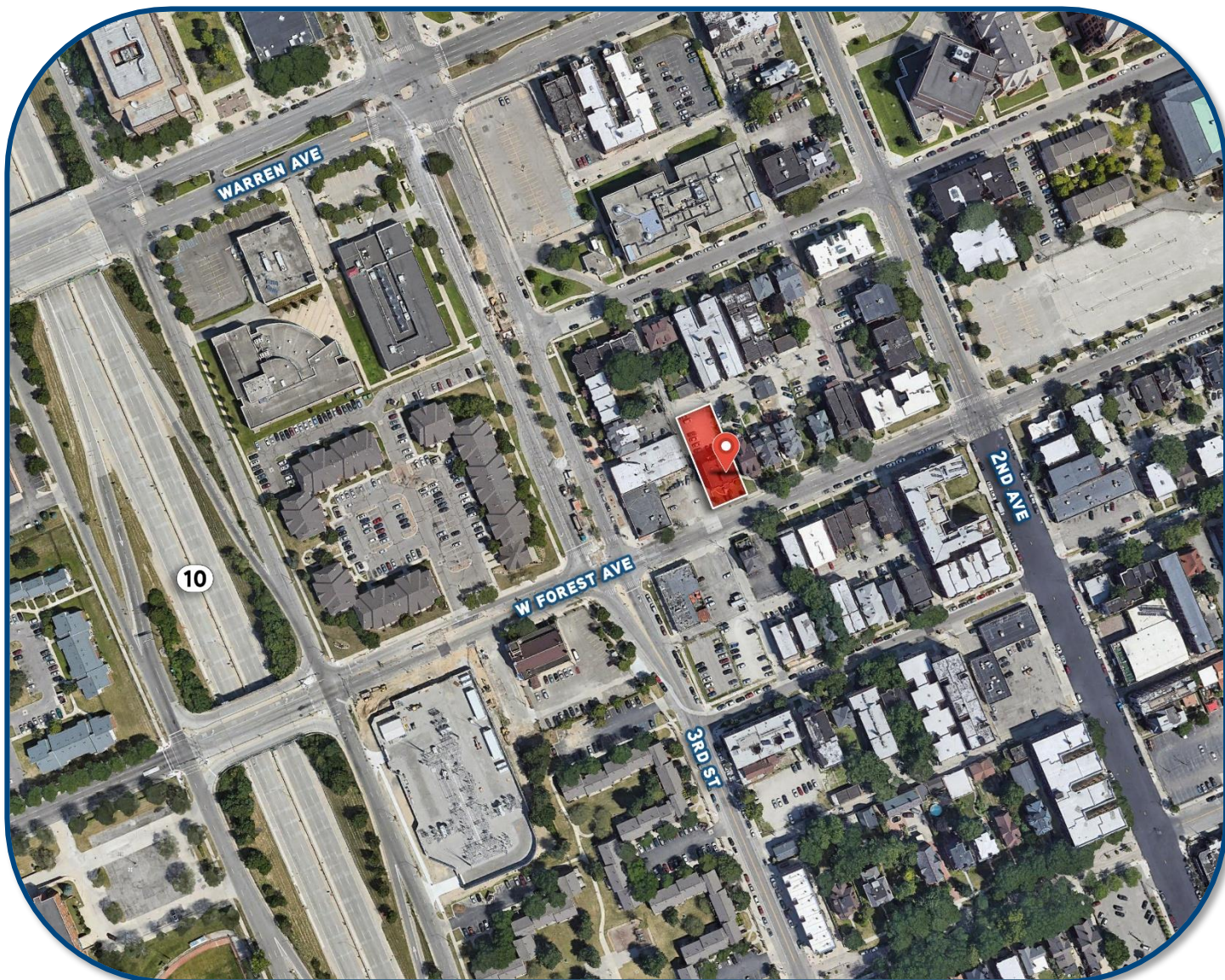
FOR SALE > MULTIFAMILY

MIDTOWN APARTMENTS

680 W FOREST AVENUE | DETROIT, MICHIGAN



> AERIAL MAP



TONY FAYNE
PHONE 248 540 1000 EXT 1608
EMAIL tony.fayne@colliers.com



COLLIERS INTERNATIONAL
2 Corporate Dr. | Suite 300
Southfield, Michigan 48076

FOR SALE > MULTIFAMILY

MIDTOWN APARTMENTS

680 W FOREST AVENUE | DETROIT, MICHIGAN

Colliers
INTERNATIONAL

> LOCATION MAP



TONY FAYNE

PHONE 248 540 1000 EXT 1608

EMAIL tony.fayne@colliers.com

Colliers
INTERNATIONAL

COLLIERS INTERNATIONAL

2 Corporate Dr. | Suite 300
Southfield, Michigan 48076