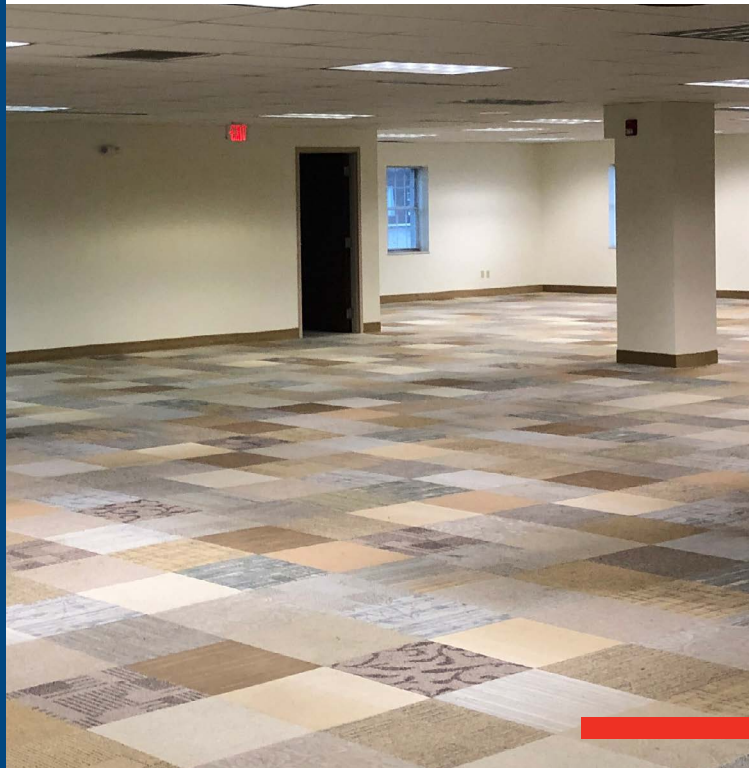


OFFICE SPACE FOR LEASE

King James 2

24650 Center Ridge Road
Westlake, Ohio 44145

- Prime office property in Westlake, one of Cleveland's premier office submarkets
- Four Suites Available: 1,500 SF - 13,025 SF
- Move-In Ready
- Full floor option available 13,025 SF
- Common areas and restrooms recently renovated
- Easy access to I-480 and I-90; minutes from Cleveland-Hopkins Airport and downtown Cleveland
- Building signage available

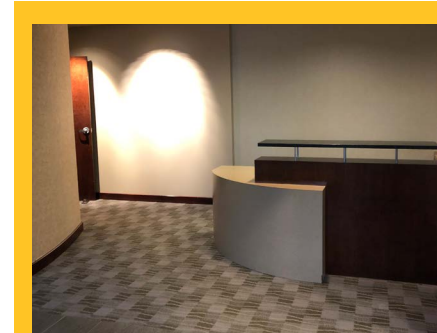
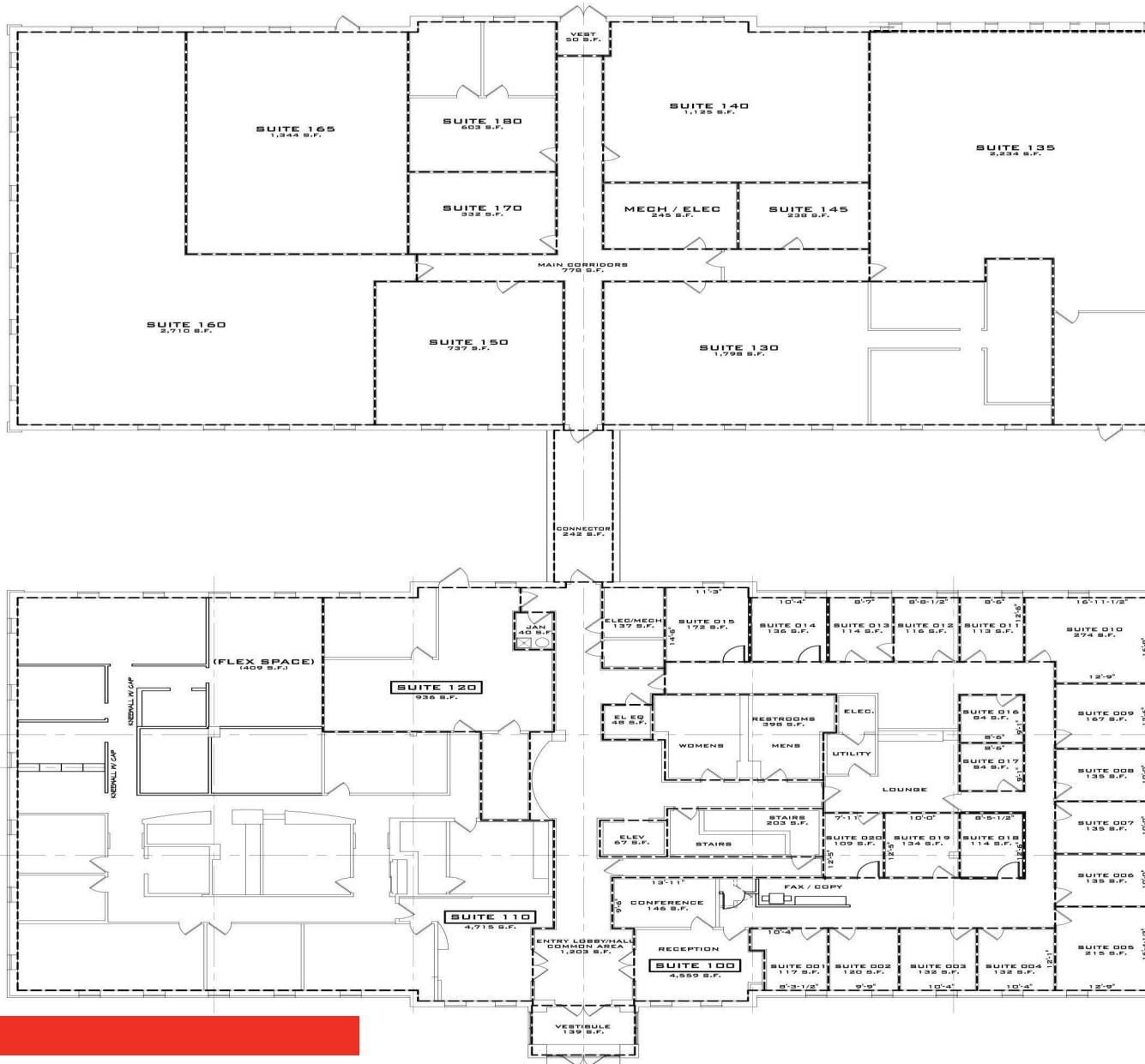


RYAN FISHER | Vice President | +1 216 239 5069 | ryan.fisher@colliers.com

COLLIERS INTERNATIONAL | 200 Public Square, Suite 1200 | Cleveland, OH 44114 | +1 216 239 5060 | www.colliers.com/cleveland

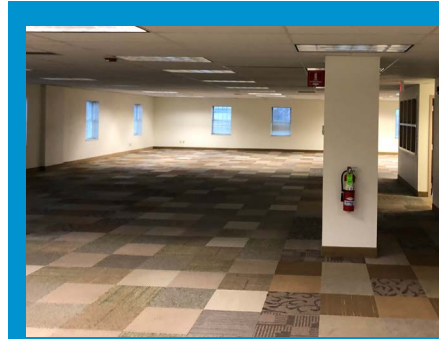
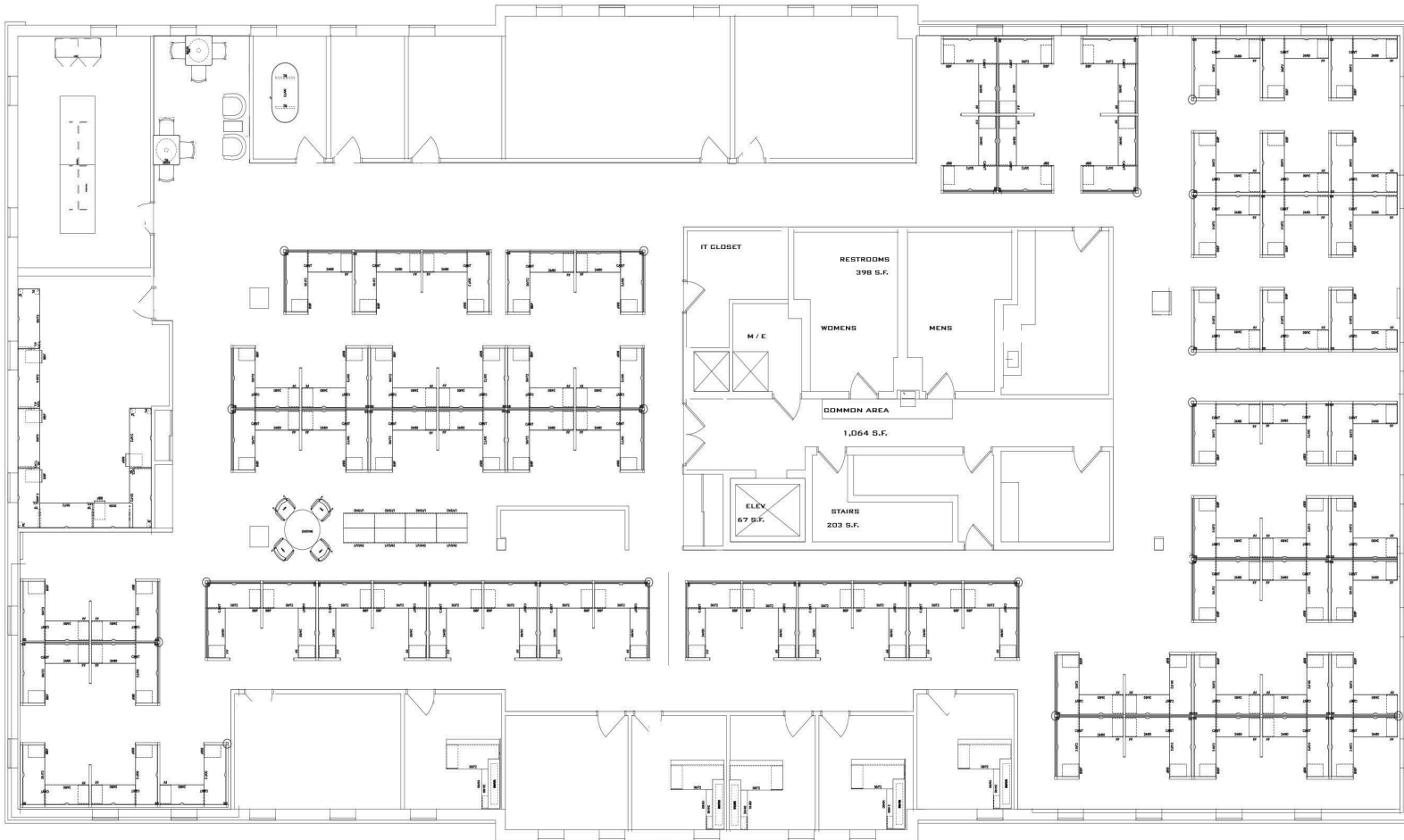
OFFICE SPACE FOR LEASE

King James 2 | First Floor



OFFICE SPACE FOR LEASE

King James 2 | Fourth Floor



RYAN FISHER | Vice President | +1 216 239 5069 | ryan.fisher@colliers.com

COLLIERS INTERNATIONAL | 200 Public Square, Suite 1200 | Cleveland, OH 44114 | +1 216 239 5060 | www.colliers.com/cleveland

OFFICE SPACE FOR LEASE



24650 Center Ridge Road | Westlake, Ohio 44145



[VIEW INTERACTIVE MAP](#)