

# 600 Col. Glenn Plaza Loop

LITTLE ROCK, AR 72210



**Isaac Smith, CCIM, SIOR**  
Principal  
501.372.6161 | 736  
isaac.smith@colliers.com

**Lee Strother, CCIM**  
Principal & VP of Brokerage  
501.372.6161 | 703  
lee.strother@colliers.com



1 Allied Drive,  
Suite 1500  
Little Rock, AR 72202  
501.372.6161  
colliers.com/arkansas



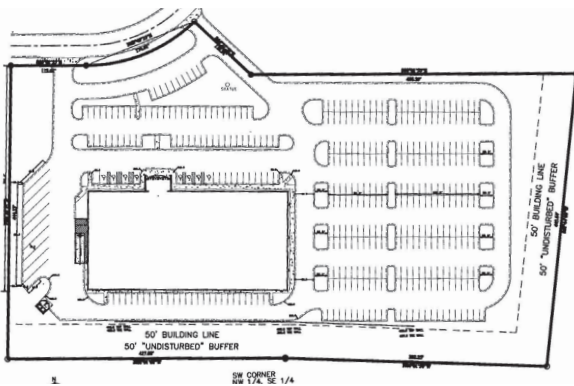


# Unique Mutlipurpose Facility

This former Playtime Pizza facility contains 70,420 SF of conditioned space and is well positioned just off Colonel Glenn Road and Interstate 430. The interior provides an open / flexible layout with several party / conference rooms and large commercial kitchen. In addition, the property is situated on approximately 8.51 acres with an existing parking ration of 5.5/1,000 SF.

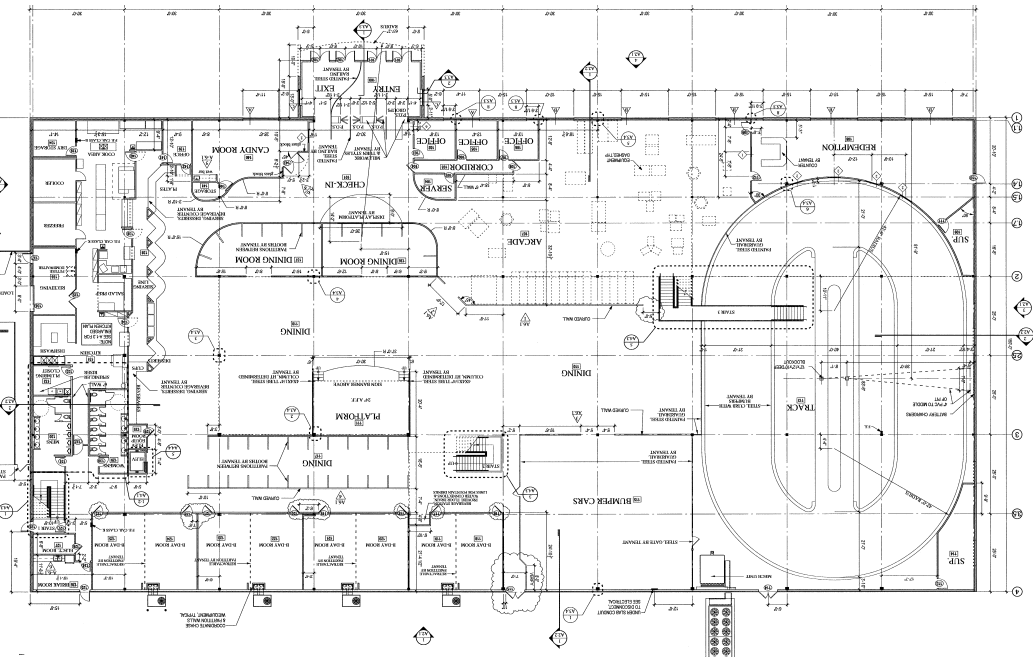
## Property Information

- Sale price: \$9,200,000
- Lease rate: negotiable
- Total building size: 70,420 SF
- First floor: approx. 45,000 SF
- Second floor: approx. 25,420 SF
- Land area: 8.51 acres
- Zoned: "C-3," General Commercial District
- Year built: 2008
- 387 parking spaces
- Parking ratio: 5.5/1,000 SF

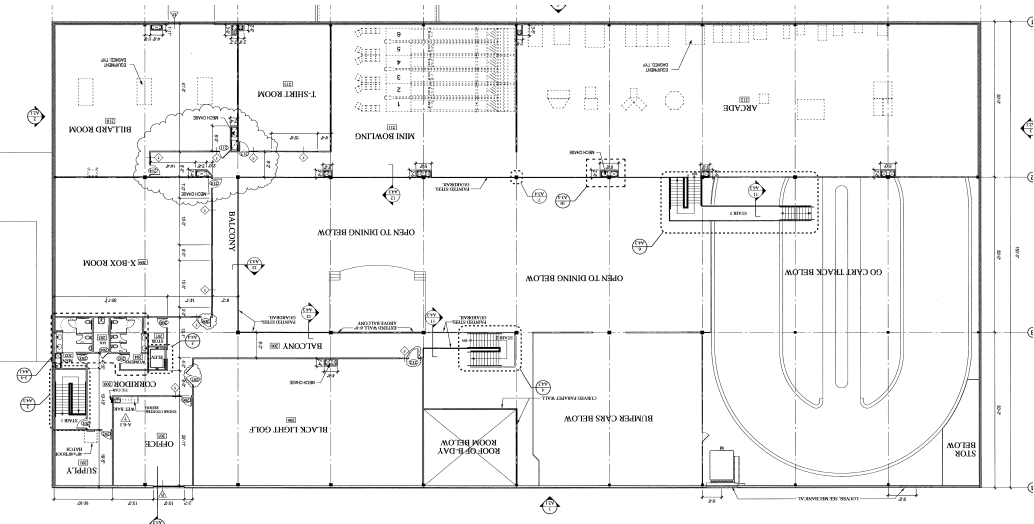


# Floor Plans

## FIRST FLOOR



## SECOND FLOOR



## Bird's Eye Aerial

