

FOR LEASE



Centennial Plaza

45 West 10000 South **Sandy, Utah**



GREG PAVICH

6550 South Millrock Drive, Suite 200 | Salt Lake City, Utah 84121 | 801.947.8300 phone | 801.947.8301 fax | www.colliers.com



GREG PAVICH
greg.pavich@colliers.com
801.947.8304

6550 South Millrock Drive, Suite 200 | Salt Lake City, Utah 84121 | 801.947.8300 phone | 801.947.8301 fax | www.colliers.com

This document has been prepared by Colliers International for advertising and general information only. Colliers International makes no guarantees, representations or warranties of any kind, expressed or implied, regarding the information including, but not limited to, warranties of content, accuracy and reliability. Any interested party should undertake their own inquiries as to the accuracy of the information. Colliers International excludes unequivocally all inferred or implied terms, conditions and warranties arising out of this document and excludes all liability for loss and damages arising therefrom. This publication is the copyrighted property of Colliers International and/or its licensor(s). ©2018. All rights reserved.



GREG PAVICH
greg.pavich@colliers.com
801.947.8304

Centennial Plaza

45 West 10000 South **Sandy, Utah**

FOR LEASE

SPACE AVAILABILITY

- Suite 107 – 3,566 RSF
- Suite 307 – 1,573 RSF



Centracom



CenturyLink

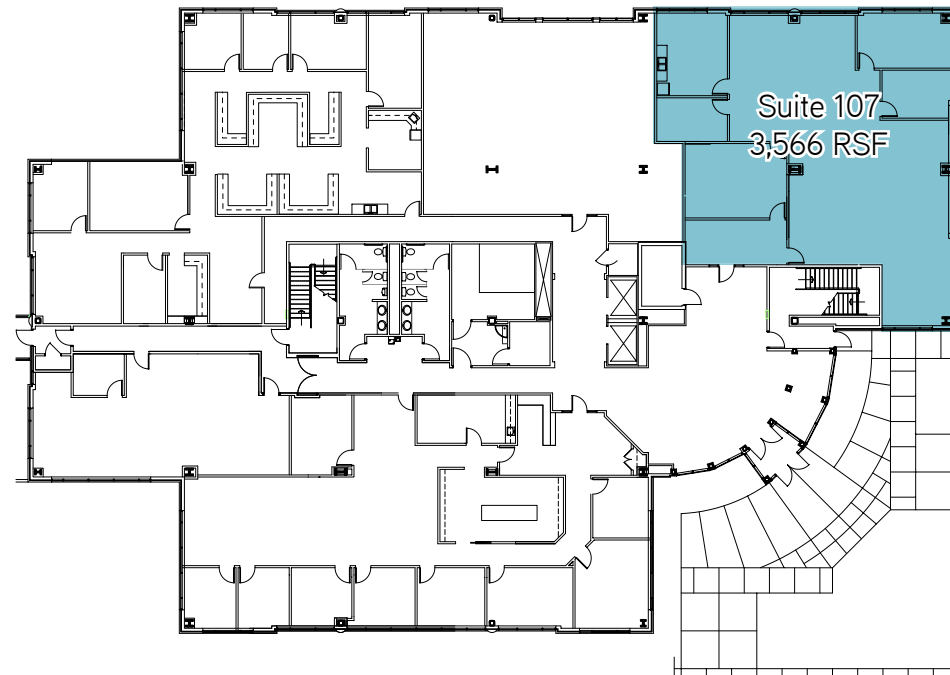


Comcast

Property Highlights:

- **\$23.00 - \$24 RSF Full Service**
- Interior Upgrades: Remodeled bathrooms w/ granite counter-tops
 - New doors with glass inserts
 - New maple baseboards
 - Brushed aluminum accents
 - Other numerous cosmetic upgrades
- Within convenient walking distance (0.4 Mile) to Trax Station
- High visibility, well located office building with convenient I-15 freeway access from 9000 S and 10600 S Exits
- In the heart of the Cairns Redevelopment Area within Sandy City (see insert Aerial)
- The Cairns Project is the most significant redevelopment area along the Wasatch front
- Adjacent to South Towne Mall
- Newer finishes, space in excellent condition

First FLOOR



Third Floor

