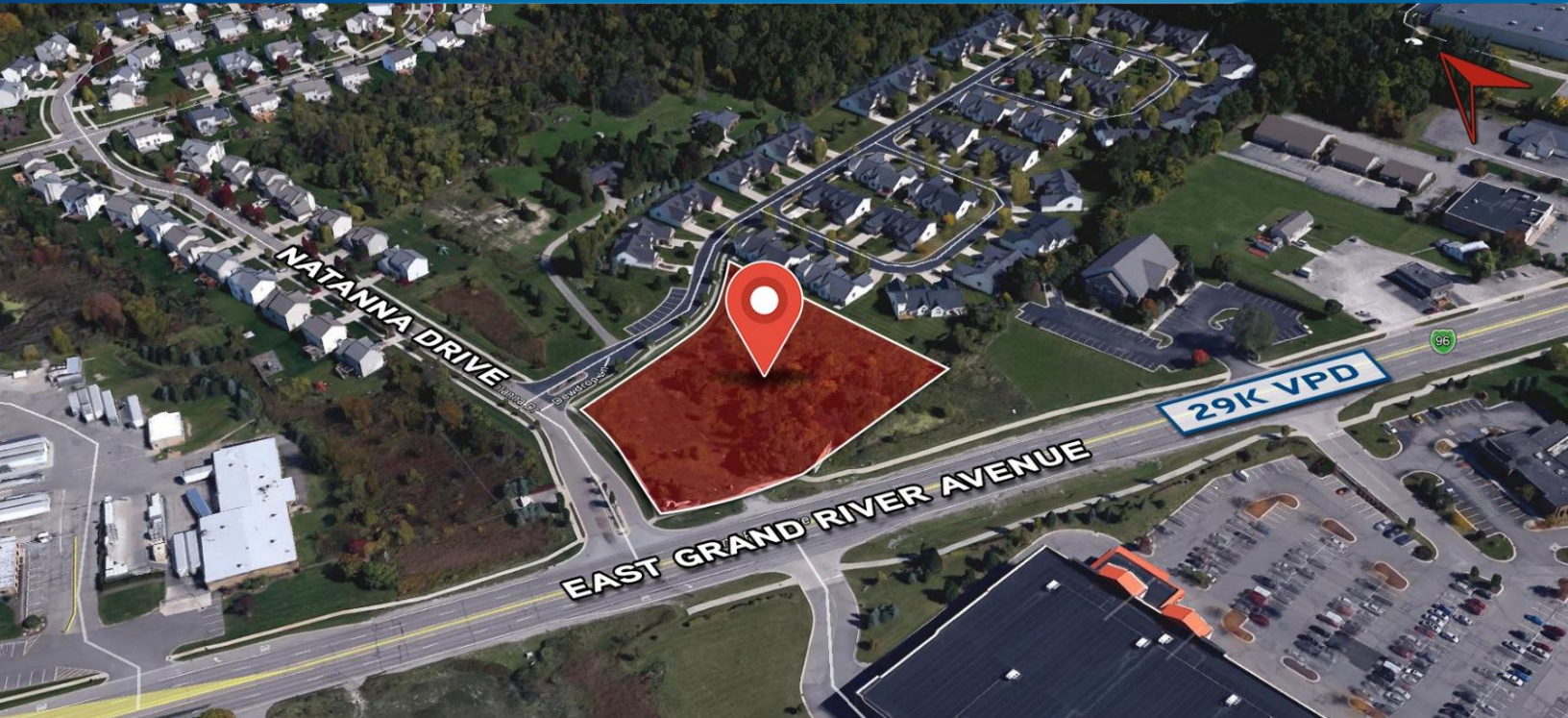


FOR SALE > LAND

# 2 ACRES

E GRAND RIVER AVE & NATANNA DR | GENOA TWP, MICHIGAN



## IDEAL FOR OFFICE, CHILD CARE USES OR BANK

### > PROPERTY HIGHLIGHTS

- Office Service Zoning with All Utilities Available
- Quick Access to I-96 & Latson Road Interchange
- Located in Growing Area

DEMOGRAPHICS	Category	1 Mile	3 Mile	5 Mile
	Population	2,871	23,818	45,536
	Average Income	\$71,849	\$77,439	\$82,650
	Households	1,219	9,654	18,257

**COLLIERS INTERNATIONAL**  
2 Corporate Drive | Suite 300  
Southfield, Michigan 48076

For More Information Call:

**LOU FRANGO**

PHONE 248 540 1000 EXT 1678

EMAIL [lou.frango@colliers.com](mailto:lou.frango@colliers.com)



[colliers.com/detroit](http://colliers.com/detroit)



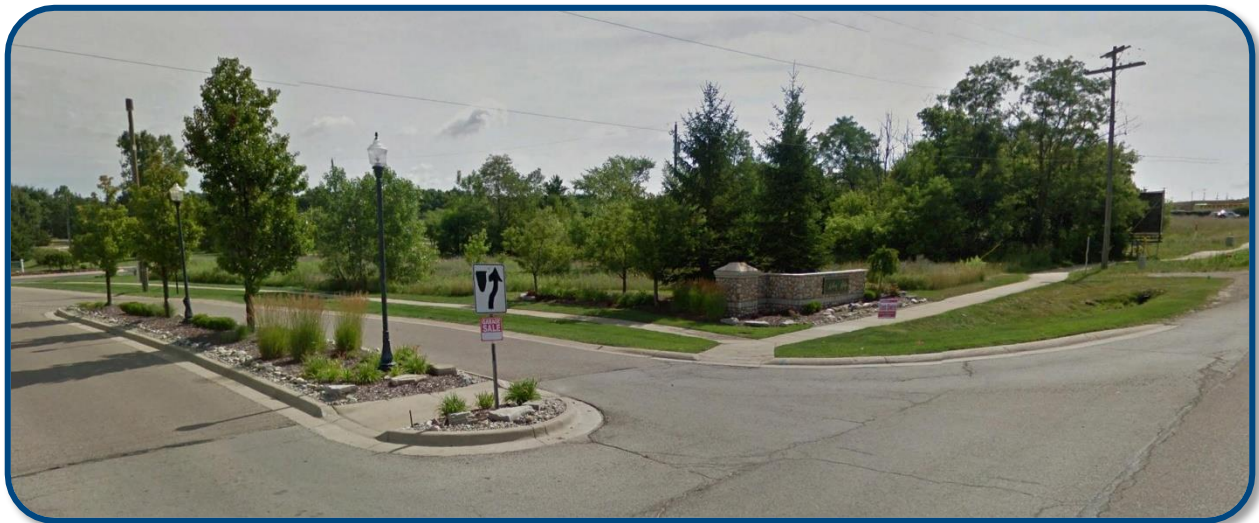
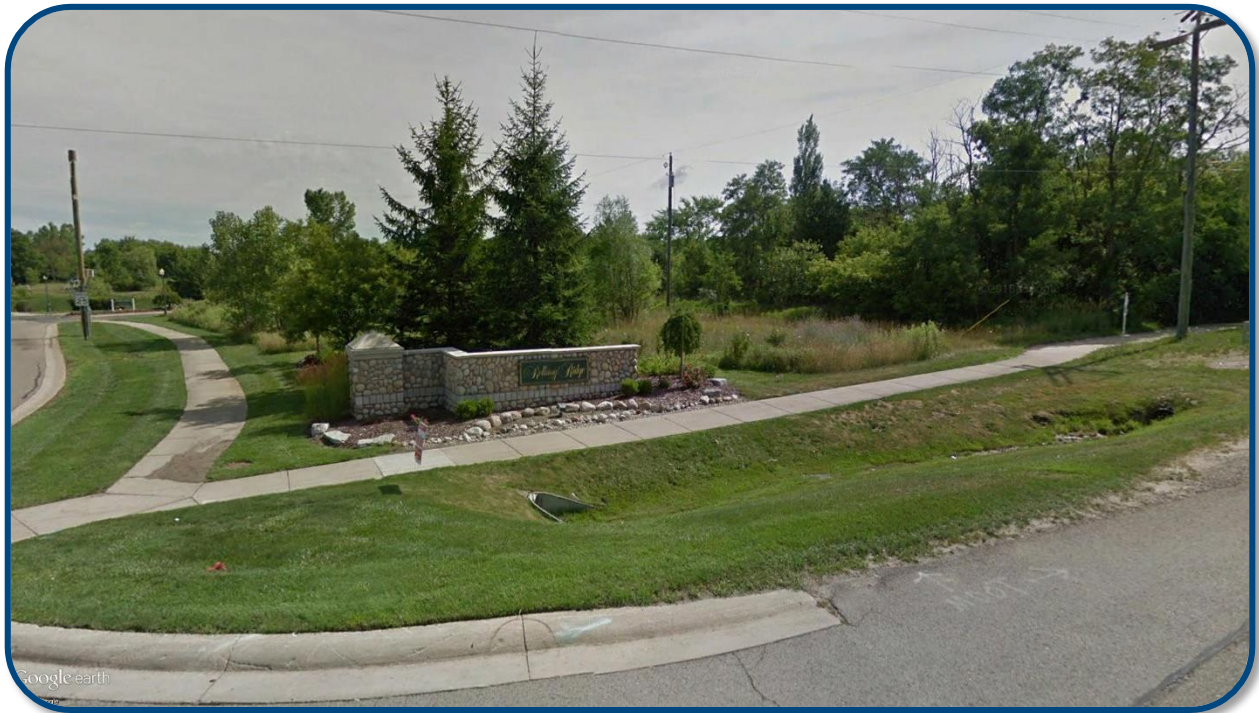
FOR SALE > LAND

# 2 ACRES

E GRAND RIVER AVE & NATANNA DR | GENOA TWP, MICHIGAN



## > PROPERTY PHOTOS



**LOU FRANGO**  
PHONE 248 540 1000 EXT 1678  
EMAIL [lou.frango@colliers.com](mailto:lou.frango@colliers.com)



**COLLIERS INTERNATIONAL**  
2 Corporate Dr. | Suite 300  
Southfield, Michigan 48076

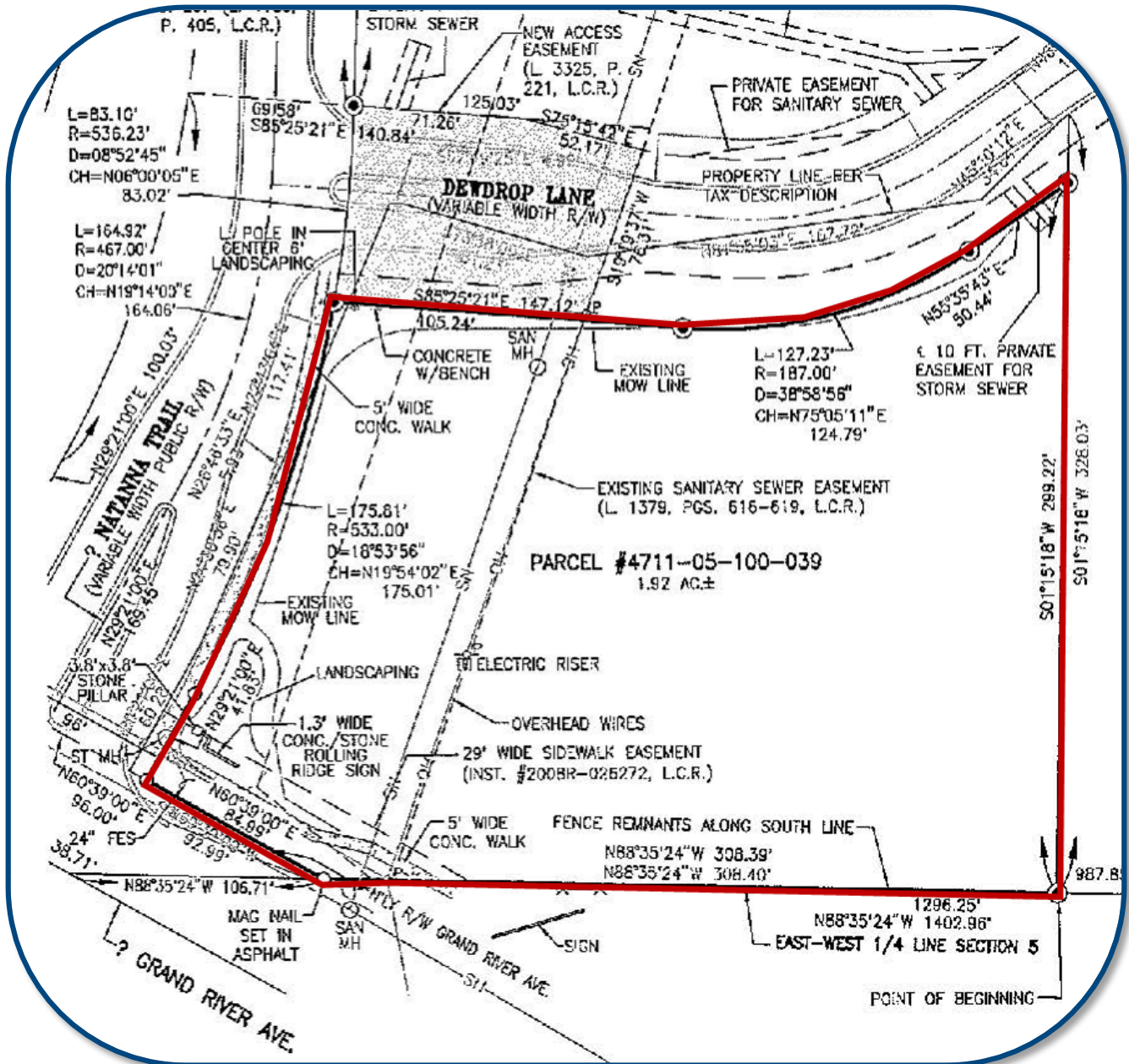
FOR SALE > LAND

# 2 ACRES

E GRAND RIVER AVE & NATANNA DR | GENOA TWP, MICHIGAN



## > SITE MAP



LOU FRANGO

PHONE 248 540 1000 EXT 1678

EMAIL [lou.frango@colliers.com](mailto:lou.frango@colliers.com)



COLLIERS INTERNATIONAL

2 Corporate Dr. | Suite 300  
Southfield, Michigan 48076

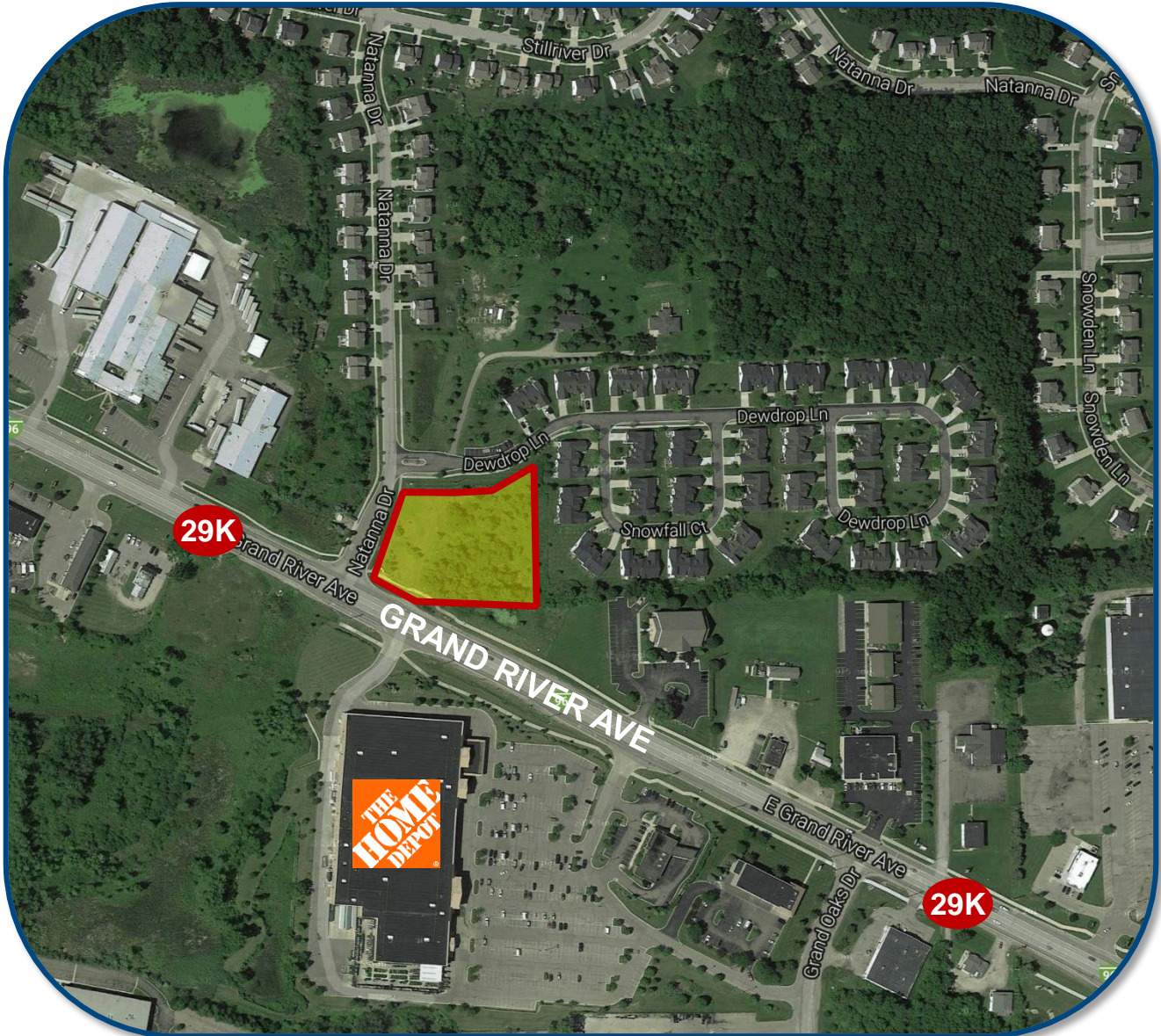
FOR SALE > LAND

# 2 ACRES

E GRAND RIVER AVE & NATANNA DR | GENOA TWP, MICHIGAN



## > AERIAL WITH TRAFFIC COUNTS



**LOU FRANGO**  
PHONE 248 540 1000 EXT 1678  
EMAIL [lou.frango@colliers.com](mailto:lou.frango@colliers.com)



**COLLIERS INTERNATIONAL**  
2 Corporate Dr. | Suite 300  
Southfield, Michigan 48076

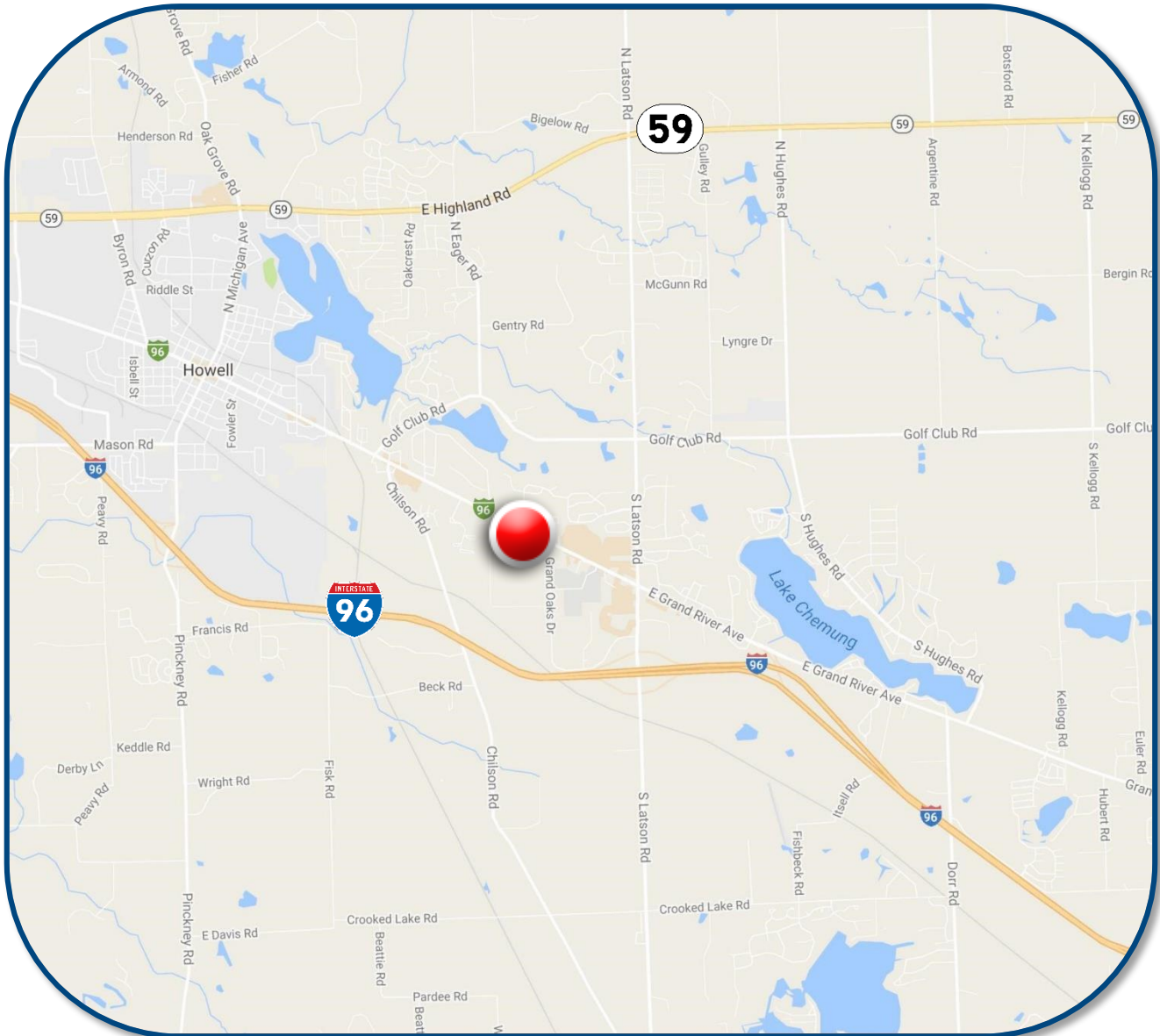
FOR SALE > LAND

# 2 ACRES

E GRAND RIVER AVE & NATANNA DR | GENOA TWP, MICHIGAN



## > LOCATION MAP



**LOU FRANGO**

PHONE 248 540 1000 EXT 1678

EMAIL [lou.frango@colliers.com](mailto:lou.frango@colliers.com)



**COLLIERS INTERNATIONAL**

2 Corporate Dr. | Suite 300

Southfield, Michigan 48076

FOR SALE > LAND

# 2 ACRES

E GRAND RIVER AVE & NATANNA DR | GENOA TWP, MICHIGAN



## > AREA MERCHANT MAP



**LOU FRANGO**  
PHONE 248 540 1000 EXT 1678  
EMAIL [lou.frango@colliers.com](mailto:lou.frango@colliers.com)



**COLLIERS INTERNATIONAL**  
2 Corporate Dr. | Suite 300  
Southfield, Michigan 48076

# SUMMARY PROFILE

2000-2010 Census, 2016 Estimates with 2021 Projections

Calculated using Weighted Block Centroid from Block Groups



Lat/Lon: 42.5923/-83.8892

RS1

E Grand River Ave & Natanna Dr

Howell, MI 48843

1 mi radius

3 mi radius

5 mi radius

POPULATION	2016 Estimated Population	2,871	23,818	45,536
	2021 Projected Population	2,929	24,265	46,378
	2010 Census Population	2,834	22,528	43,737
	2000 Census Population	1,500	16,969	34,214
	Projected Annual Growth 2016 to 2021	0.4%	0.4%	0.4%
	Historical Annual Growth 2000 to 2016	5.7%	2.5%	2.1%
	2016 Median Age	32.5	37.1	40.1
HOUSEHOLDS	2016 Estimated Households	1,219	9,654	18,257
	2021 Projected Households	1,292	10,215	19,315
	2010 Census Households	1,149	8,761	16,851
	2000 Census Households	599	6,412	12,722
	Projected Annual Growth 2016 to 2021	1.2%	1.2%	1.2%
	Historical Annual Growth 2000 to 2016	6.5%	3.2%	2.7%
RACE AND ETHNICITY	2016 Estimated White	93.5%	95.2%	95.5%
	2016 Estimated Black or African American	0.7%	0.6%	0.7%
	2016 Estimated Asian or Pacific Islander	2.1%	1.3%	1.2%
	2016 Estimated American Indian or Native Alaskan	0.4%	0.4%	0.4%
	2016 Estimated Other Races	3.3%	2.5%	2.2%
	2016 Estimated Hispanic	4.5%	3.4%	2.8%
INCOME	2016 Estimated Average Household Income	\$71,849	\$77,439	\$82,650
	2016 Estimated Median Household Income	\$62,577	\$66,603	\$70,407
	2016 Estimated Per Capita Income	\$30,526	\$31,460	\$33,275
EDUCATION (AGE 25+)	2016 Estimated Elementary (Grade Level 0 to 8)	0.9%	1.5%	1.3%
	2016 Estimated Some High School (Grade Level 9 to 11)	3.4%	3.7%	3.7%
	2016 Estimated High School Graduate	27.8%	27.0%	27.2%
	2016 Estimated Some College	31.1%	27.0%	26.4%
	2016 Estimated Associates Degree Only	8.3%	9.6%	9.8%
	2016 Estimated Bachelors Degree Only	21.4%	21.9%	21.1%
	2016 Estimated Graduate Degree	7.0%	9.4%	10.5%
BUSINESS	2016 Estimated Total Businesses	218	1,032	1,974
	2016 Estimated Total Employees	2,081	9,275	20,009
	2016 Estimated Employee Population per Business	9.5	9.0	10.1
	2016 Estimated Residential Population per Business	13.1	23.1	23.1

This report was produced using data from private and government sources deemed to be reliable. The information herein is provided without representation or warranty.