

FOR LEASE > PORTLAND

Portland Distribution Center

19241 NE SAN RAFAEL ST., PORTLAND, OREGON

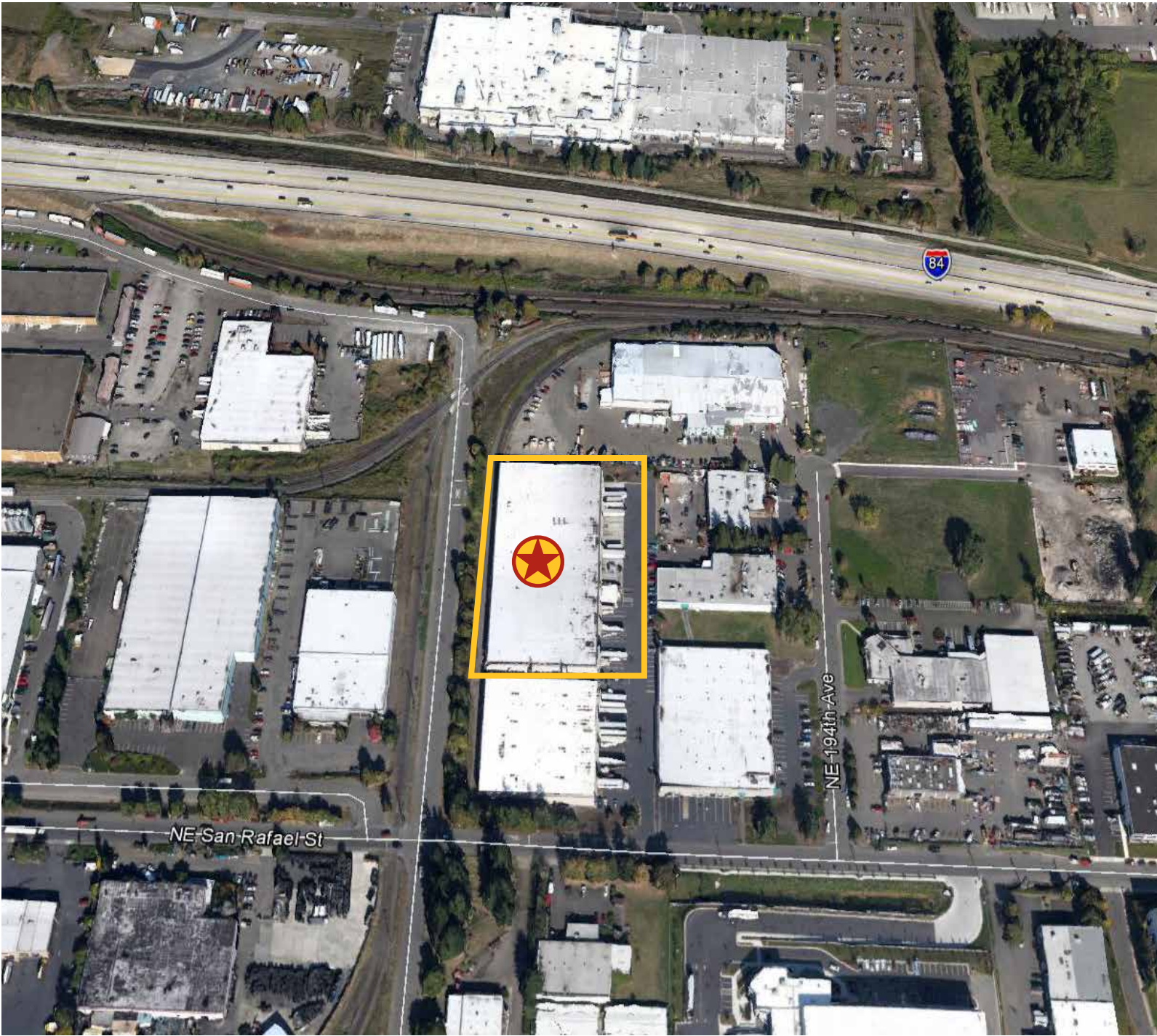
FOR LEASE > PORTLAND

Portland Distribution Center

19241 NE SAN RAFAEL ST., PORTLAND, OREGON



The building recently underwent a major renovation - including new roof, insulation and skylights, updated office, as well as many other improvements.



Size

Shell 82,793 square feet
Office 2,046 square feet
Divisible to 60,000/SF or 40,000/SF

Sprinkler

Wet System/Dry System

Clear Height

27'-28'

Power

Heavy Power - 277/480 Volt 3 Phase

Loading

17 dock doors with 14 load levelers
1 grade door and 8 rail doors

Zoning

GI - General Industrial

This freestanding building has excellent access to I-84.

Rate Reduction

Lease Rate
\$0.37 for Shell
\$0.75 Office Surcharge



This document has been prepared by Colliers International for advertising and general information only. Colliers International makes no guarantees, representations or warranties of any kind, expressed or implied, regarding the information including, but not limited to, warranties of content, accuracy and reliability. Any interested party should undertake their own inquiries as to the accuracy of the information. Colliers International excludes unequivocally all inferred or implied terms, conditions and warranties arising out of this document and excludes all liability for loss and damages arising there from. This publication is the copyrighted property of Colliers International and/or its licensor(s). ©2017. All rights reserved.



SCOTT MACLEAN
503 542 5891
PORTLAND, OR
scott.macleam@colliers.com

KEN BOYKO
503 542 5889
PORTLAND, OR
ken.boyko@colliers.com

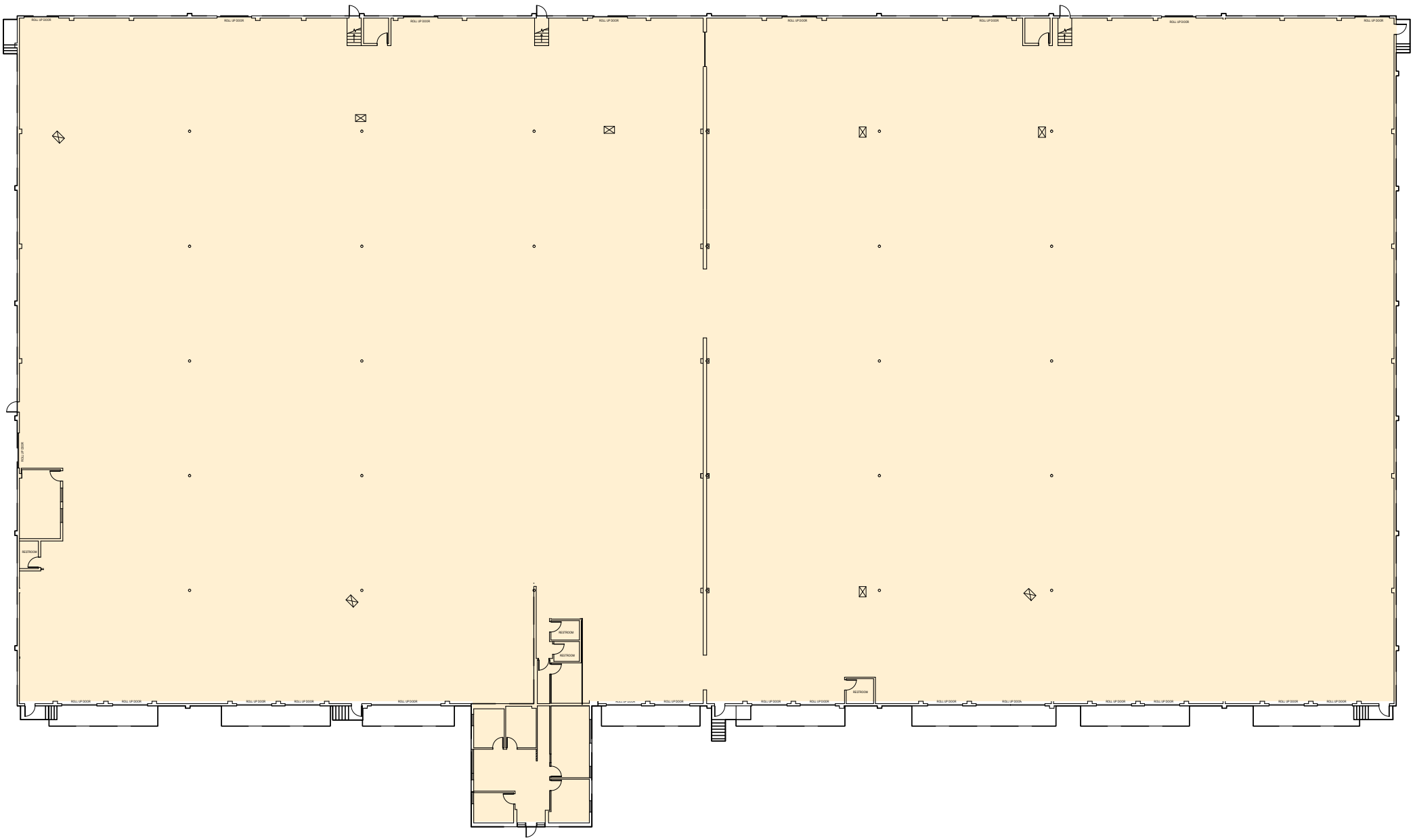
COLLIERS INTERNATIONAL
851 SW Sixth Avenue
Suite 1200
Portland, Oregon 97204
www.colliers.com

FOR LEASE > PORTLAND

Portland Distribution Center

19241 NE SAN RAFAEL ST., PORTLAND, OREGON

FLOOR PLAN



SCOTT MACLEAN
503 542 5891
PORTLAND, OR
scott.maclea@colliers.com

KEN BOYKO
503 542 5889
PORTLAND, OR
ken.boyko@colliers.com

COLLIERS INTERNATIONAL
851 SW Sixth Avenue
Suite 1200
Portland, Oregon 97204
www.colliers.com