

FOR SALE OR LEASE

3001 Davis Boulevard

JOPLIN, MISSOURI



Building Features

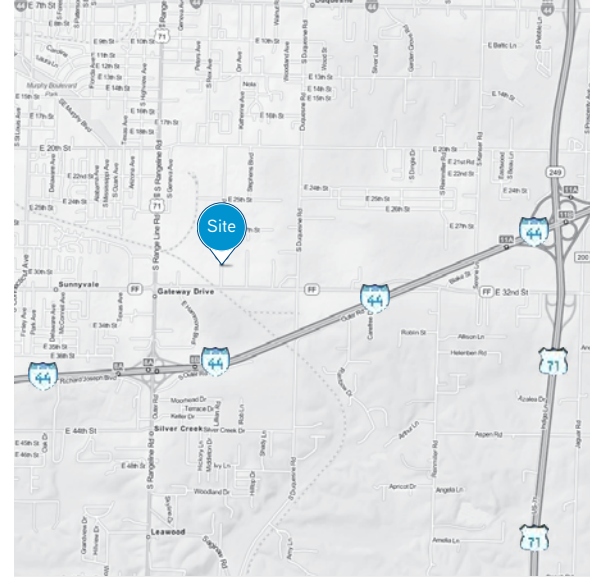
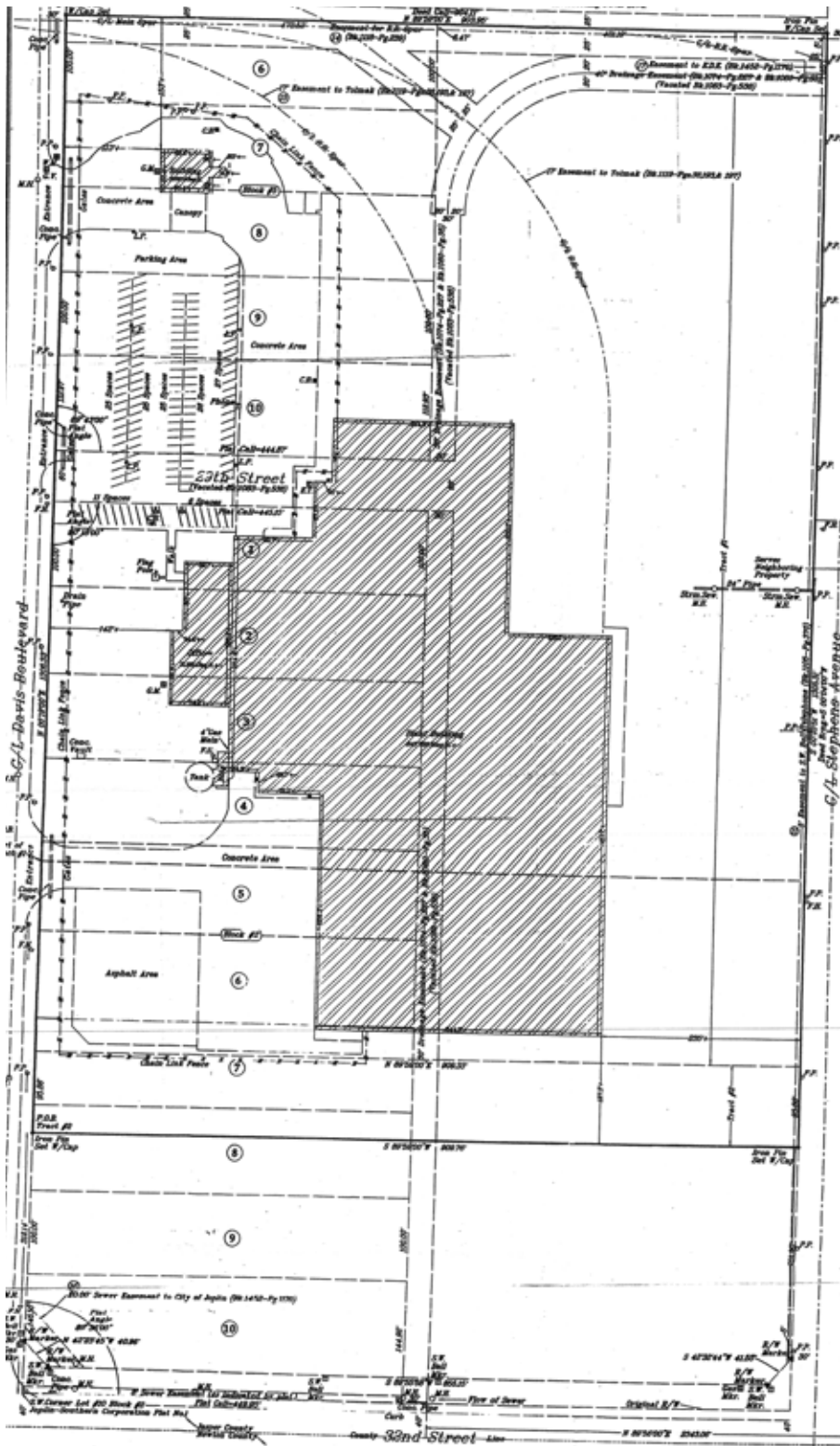
- > Available SF: 125,000 - 137,620 SF
 - > 15,000 SF office in 125,000 SF main warehouse
- > Additional office area: 12,620 SF (not included in the main warehouse)
- > Land area: 27.12 acres
- > Year built: 1962
- > Construction type: concrete / steel frame, metal side walls
- > Roof: new in 2012 (20-year warranty)
- > Loading:
 - > 14 dock-high doors
 - > 1 drive-in door
- > Clear height: 22'
- > Trailer parking: approximately 150 spaces total for building (see site plan)
- > Electrical: 10,000 amp / 440 volt / 3-phase
- > Sprinkler: wet
- > Previously rail-served: Kansas City Southern
- > Zoning: M-2
- > Occupied space is leased to national tenant, Rock-Tenn. Call Broker for details.
- > Lease rate:
 - > \$3.50 PSF, gross industrial on warehouse
 - > \$7.50 PSF, gross industrial on additional office
- > Sale price: \$7,950,000

AGENT: JOHN STAFFORD SIOR, CCIM
+1 816 556 1184
KANSAS CITY, MO
john.stafford@colliers.com

AGENT: DAVID GLENN
+1 417 434 4845
JOPLIN, MO
theglenngroup@yahoo.com



3001 Davis Boulevard > Site Plan



Contact Us

AGENT: JOHN STAFFORD SIOR, CCIM

+1 816 556 1184

KANSAS CITY, MO

john.stafford@colliers.com

COLLIERS INTERNATIONAL
4520 Main Street, Suite 1000
Kansas City, MO 64111

www.colliers.com

AGENT: DAVID GLENN

+1 417 434 4845

JOPLIN, MO

theglenngroup@yahoo.com

THE GLENN GROUP
3929 East 7th Street, Suite G
Joplin, MO 64801