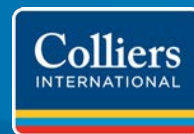
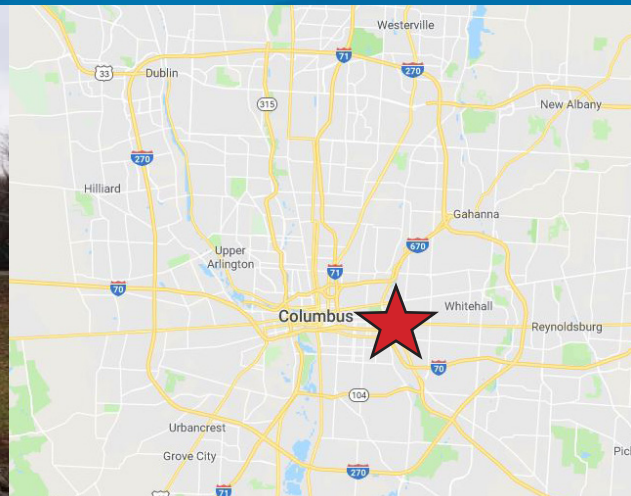


FOR LEASE > INDUSTRIAL SPACE



2000 E Fulton Street

COLUMBUS, OHIO 43205



2000 E Fulton Street > Industrial Space

Two standalone office/warehouse buildings with outdoor storage capabilities available for lease immediately. Located a couple miles east of downtown Columbus, the buildings offer easy access to all the major freeways. The buildings have large drive-in doors, heavy power, and floor drains that could accommodate many different uses.

Building Type:	Building #1: 8,750 SF Building #2: 9,350 SF Total: 18,100 +/- SF industrial facility
Available Space:	18,100 +/- SF
Lease Rate:	\$7.00/SF MG
Lot Size:	2.50 acres
Zoning:	Manufacturing (City of Columbus)

Contact Us

JONATHAN R. SCHUEN, SIOR
614.437.4495
COLUMBUS, OH
jonathan.schuen@colliers.com

MICHAEL R. LINDER, SIOR
614.410.5628
COLUMBUS, OH
michael.linder@colliers.com

SHANE E. WOLOSHAN, SIOR
614.410.5624
COLUMBUS, OH
shane.woloshan@colliers.com

JOEL R. YAKOVAC, SIOR
614.410.5654
COLUMBUS, OH
joel.yakovac@colliers.com

This document has been prepared by Colliers International for advertising and general information only. Colliers International makes no guarantees, representations or warranties of any kind, expressed or implied, regarding the information including, but not limited to, warranties of content, accuracy and reliability. Any interested party should undertake their own inquiries as to the accuracy of the information. Colliers International excludes unequivocally all inferred or implied terms, conditions and warranties arising out of this document and excludes all liability for loss and damages arising there from. This publication is the copyrighted property of Colliers International and/or its licensor(s). ©2019. All rights reserved.

COLLIERS INTERNATIONAL GREATER COLUMBUS REGION

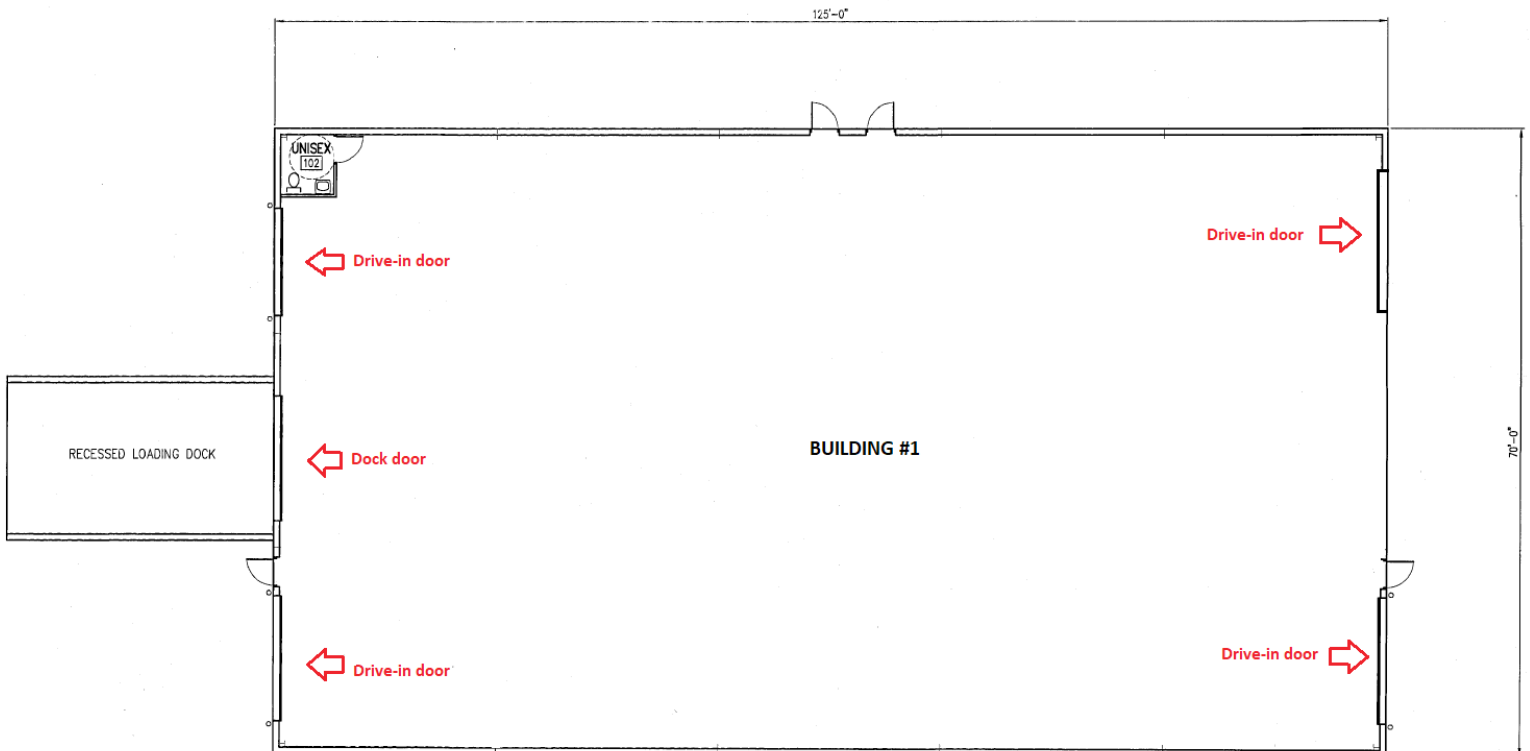
Two Miranova Place, Suite 900
Columbus, OH 43215
www.colliers.com

Building #1

Building Amenities

- 8,750 SF total- 100% clear span warehouse
- Four (4) drive-in doors with drive-thru configuration
 - Three (3) 14' x 14'
 - One (1) 12' x 14'
- One (1) exterior dock door with leveler
- 16'-20' clear height
- Fluorescent lighting
- Radiant & gas fired heat throughout
- Floor drains
- Air compressor lines
- Heavy power
 - 480/277 Volt- 3 phase, 4 wire electric service
 - 120/208 Volt- 3 phase, 4 wire electric service
- Metal construction
- Restroom
- Built in 2012

Floor Plan

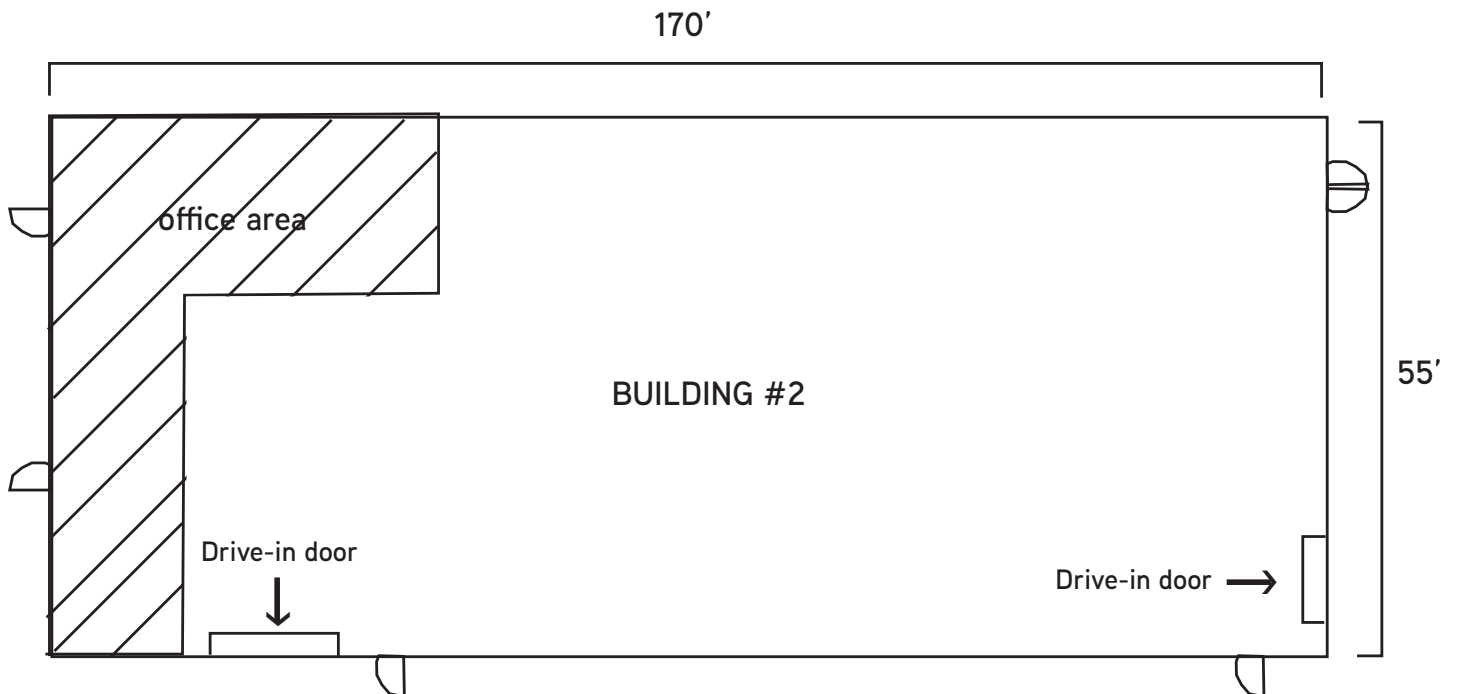


Building #2

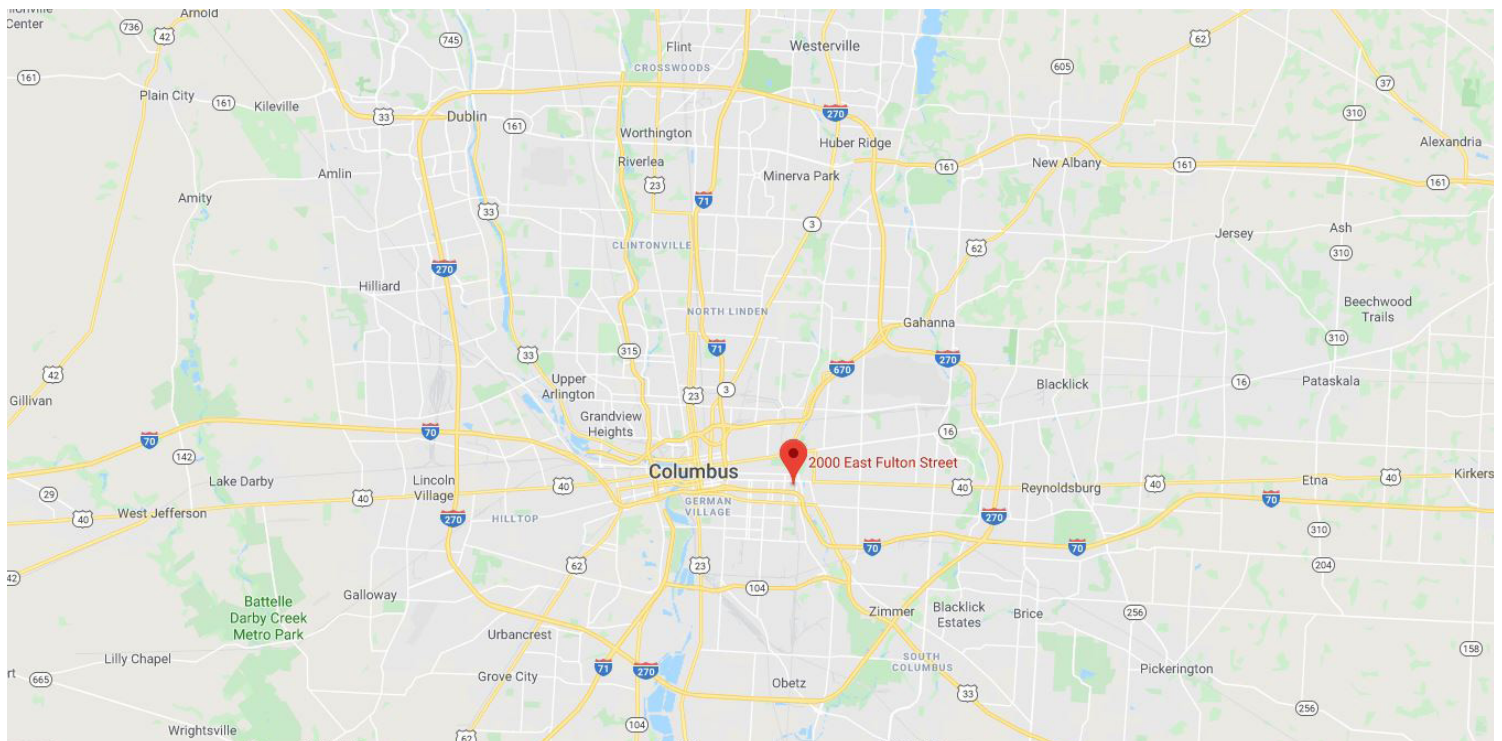
Building Amenities

- 9,350 SF total
- Approximately 1,800 SF office space
- Two (2) drive-in doors
 - One (1) 12' x 12' drive-in door
 - One (1) 10' x 10' drive-in door
- 12' clear height
- Fluorescent lighting
- Gas fired heat throughout
- Floor drains
- Air compressor lines
- Heavy power
 - 480/277 Volt- 3 phase, 4 wire electric service
 - 120/208 Volt- 3 phase, 4 wire electric service
- Block construction
- Restrooms
- Built in 1961

Floor Plan



Aerial



JONATHAN R. SCHUEN, SIOR
614.437.4495
COLUMBUS, OH
jonathan.schuen@colliers.com

MICHAEL R. LINDER, SIOR
614.410.5628
COLUMBUS, OH
michael.linder@colliers.com

SHANE E. WOLOSHAN, SIOR
614.410.5624
COLUMBUS, OH
shane.woloshan@colliers.com

JOEL R. YAKOVAC, SIOR
614.410.5654
COLUMBUS, OH
joel.yakovac@colliers.com

