

FOR LEASE

6,500 SF Office Space



5176 HARDING HIGHWAY, MAYS LANDING, NEW JERSEY



Property Features

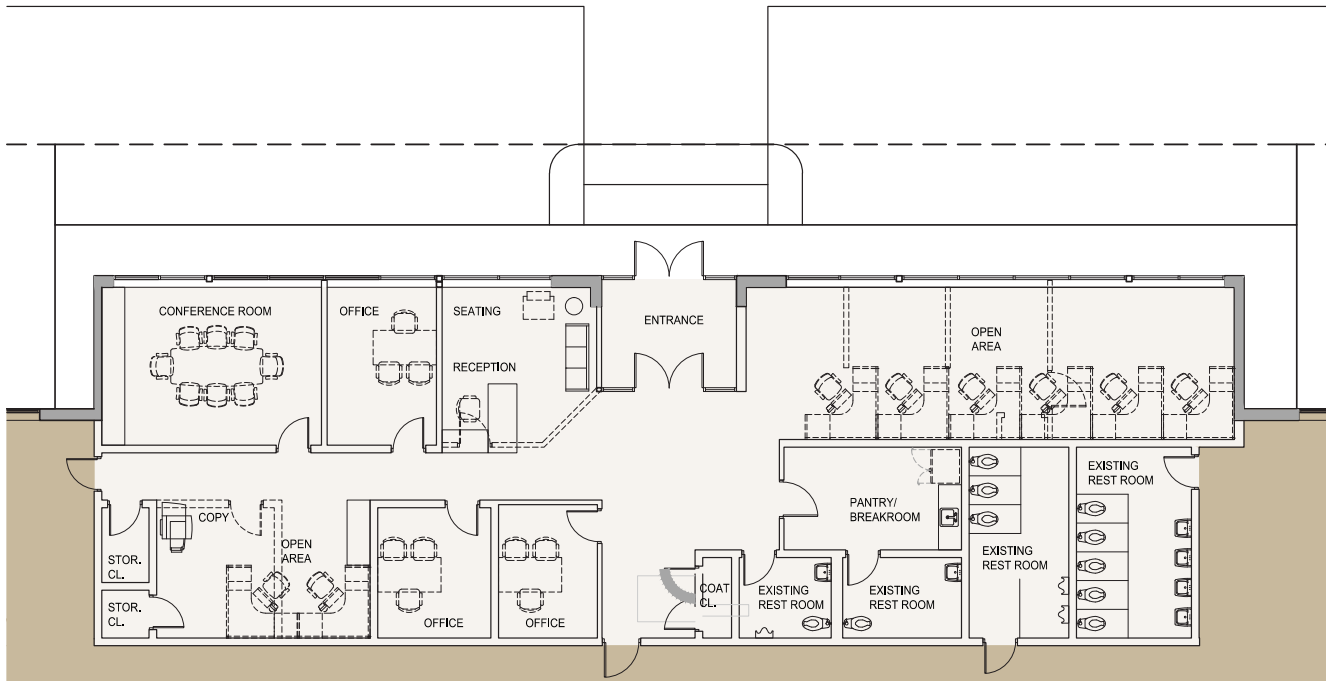
- > 6,500 SF office space
- > Part of large warehouse facility
- > Owner will improve space
- > New roof
- > Signage available - new sign to be installed soon
- > Close proximity to the Atlantic City Expressway and Garden State Parkway
- > Great visibility on Route 40

Contact

TONY DIDIO, SIOR
SENIOR VICE PRESIDENT
+1 609 820 5900
tony.didio@colliers.com

COLLIERS INTERNATIONAL
1317 Route 73
Suite 109
Mount Laurel, NJ 08054
+1 856 234 9300
www.colliers.com/mountlaurel

FLOOR PLAN



Contact

TONY DIDIO, SIOR
SENIOR VICE PRESIDENT
+1 609 820 5900
tony.didio@colliers.com



@ColliersSNJ



ColliersSNJ



colliers.com/mountlaurel

The foregoing information was furnished to us by sources which we deem to be reliable, but no warranty or representation is made as to the accuracy thereof. Subject to correction of errors, omissions, change of price, prior sale or withdrawal from market without notice. The aerial image is intended to provide a general outline of the subject property. It is not a survey nor should it be relied upon for purposes of determining property lines or boundaries.

COLLIERS INTERNATIONAL
1317 Route 73
Suite 109
Mount Laurel, NJ 08054
+1 856 234 9300