

FOR SALE > COMMERCIAL LAND



N. Godley Station Blvd

POOLER, GA 31322



For Sale > N. Godley Station Blvd

This ±2.6 acre property is divisible to ±1 acre and sits between Godley Station Boulevard and Traders Way near the rapidly developing Pooler Parkway/I-95 corridor. This location boasts a dense population, rapid commercial growth and favorable demographics. The site is perfectly positioned for a variety of commercial uses!

Listing Details

- > ±2.6 acres divisible to ±1 acre
- > 55' frontage on Godley Station Blvd
- > Visibility from Pooler Parkway
- > Deed restrictions lifted

Demographics 2016

Radius	1 Mile	3 Mile	5 Mile
Population	5,515	20,037	41,411
Households	2,467	7,979	14,953
Avg. Household Income	\$89,219	\$82,866	\$82,454

ASKING PRICE REDUCED: ~~\$600,000/ACRE~~ **\$500,000/ACRE**

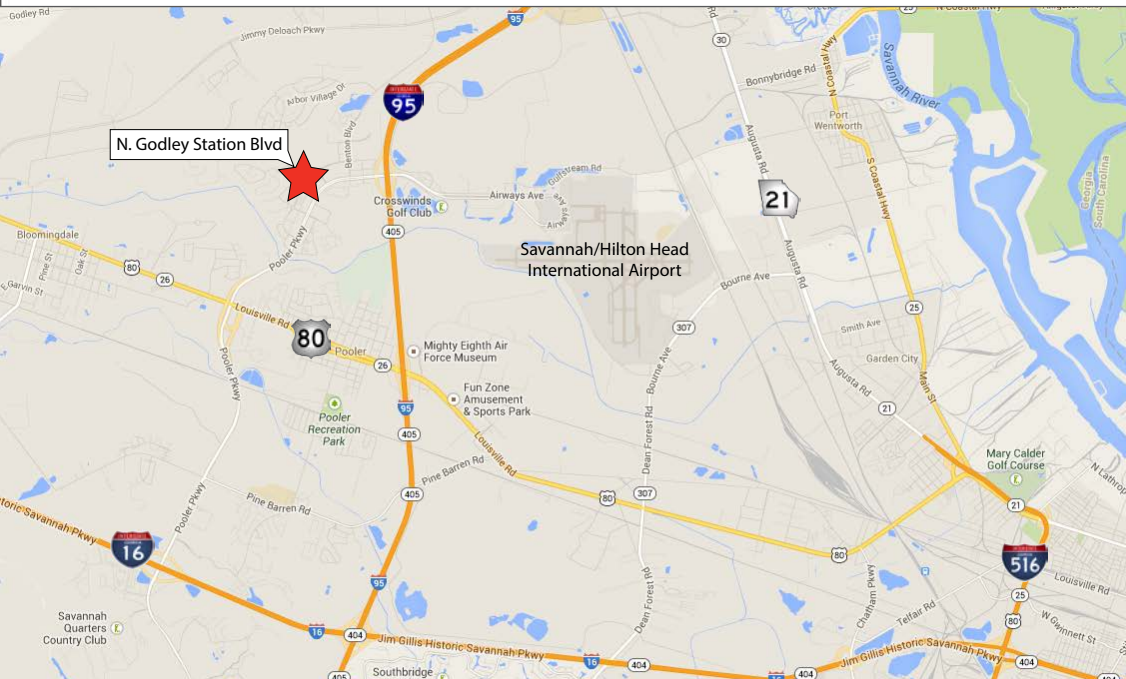
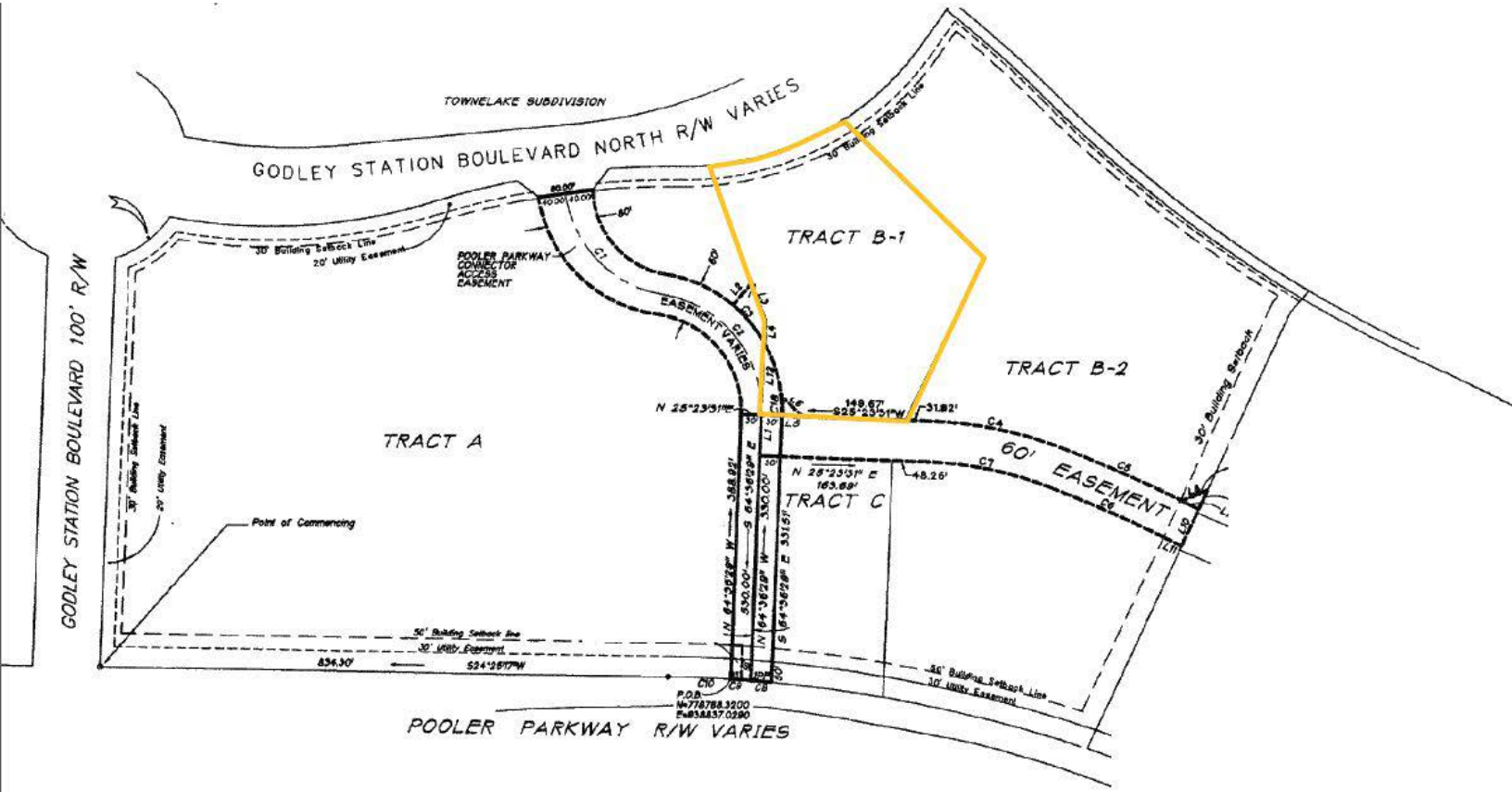
HILARY B. SHIPLEY
912 662 8013
SAVANNAH, GA
hilary.shipley@colliers.com

COLLIERS INTERNATIONAL
545 E. York Street
Savannah, GA 31401
www.colliers.com

FOR SALE > COMMERCIAL LAND

N. Godley Station Blvd

POOLER, GA 31322



Contact Us

HILARY B. SHIPLEY
912 662 8013
SAVANNAH, GA
hilary.shiple@colliers.com

COLLIERS INTERNATIONAL
545 E. York Street
Savannah, GA 31401
www.colliers.com

The information contained herein has been obtained from sources deemed reliable. While every reasonable effort has been made to ensure its accuracy, we cannot guarantee it. No responsibility is assumed for any inaccuracies. Readers are encouraged to consult their professional advisers prior to acting on any of the material contained in this report.

