

OFFICE SPACE FOR LEASE

Riverwood Corporate Center I

N19 W24400 Riverwood Drive - Pewaukee, WI



BUILDING INFORMATION

Available Space: 6,517 RSF *Available 8/2018

Building Size: 89,457 SF

Stories: 3

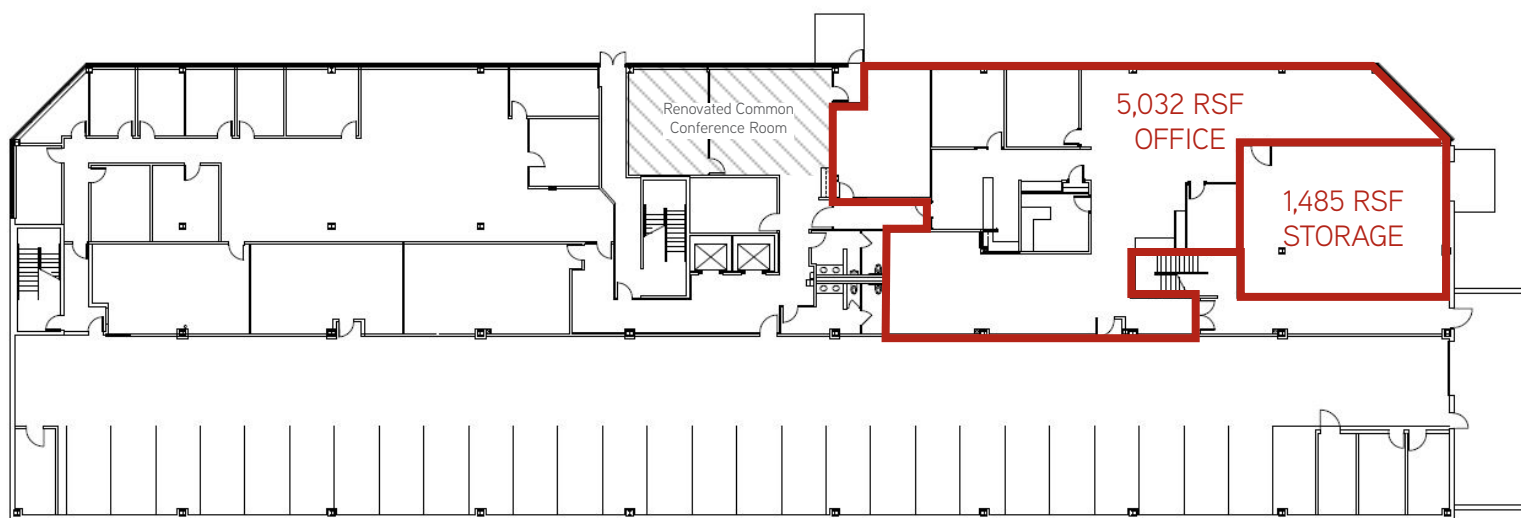
Year Built: 2001

Parking: 5/1,000 SF

Lease Rate: \$10.00/SF NNN

HIGHLIGHTS

- New common area updates
- Attached storage with loading dock
- Great views overlooking the conservancy
- Renovated Common area Conference Room
- Exposed ceilings
- Underground parking available
- Located 1/4 Mile from Interstate 94
- Abundant area amenities including restaurants, banking, residential etc



Common Area Renovation Renderings



CONTACT US

BRANDON CIEBELL
DIRECT: 414 982 6989
MOBILE: 608 751 6501
brandon.ciebell@colliers.com

LYLE LANDOWSKI
DIRECT: 414 278 6827
MOBILE: 262 751 5111
lyle.landowski@colliers.com



COLLIERS INTERNATIONAL
833 E Michigan St, Suite 500
Milwaukee, WI 53202
414 276 9500
www.colliers.com/wisconsin

This document/email has been prepared by Colliers International for advertising and general information only. Colliers International makes no guarantees, representations or warranties of any kind, expressed or implied, regarding the information including, but not limited to, warranties of content, accuracy and reliability. Any interested party should undertake their own inquiries as to the accuracy of the information. Colliers International excludes unequivocally all inferred or implied terms, conditions and warranties arising out of this document and excludes all liability for loss and damages arising there from. This publication is the copyrighted property of Colliers International and/or its licensor(s). © 2016. All rights reserved. This communication is not intended to cause or induce breach of an existing listing agreement.