

**FOR LEASE** OFFICE/WAREHOUSE FLEX SPACE

# HIGHLAND INDUSTRIAL CENTER

2910 - 3010 SOUTH HIGHLAND DRIVE // LAS VEGAS, NEVADA 89109



**Chris Connell**  
+1 702 836 3709  
chris.connell@colliers.com  
License # NV-S.0075502

**Grant Traub,**  **SIR**  
+1 702 836 3789  
grant.traub@colliers.com  
License # NV-S.0039295

3960 Howard Hughes Parkway, Suite 150  
Las Vegas, NV 89169  
T +1 702 735 5700  
[www.colliers.com/lasvegas](http://www.colliers.com/lasvegas)

**FOR LEASE** OFFICE/WAREHOUSE FLEX SPACE

# HIGHLAND INDUSTRIAL CENTER

2910 - 3010 SOUTH HIGHLAND DRIVE // LAS VEGAS, NEVADA 89109




**Highland Industrial Center** is comprised of five separate industrial buildings that offer a wide variety of floor plans with varying office configurations and warehouse clearance heights. All industrial units offer some combination of dock, ramp and ground level loading.

The property is conveniently located just minutes from the Las Vegas “Strip” with easy access to the I-15 Freeway as well as both East and West Corridors via Sahara Avenue. Vacant units are turn-key and available for immediate occupancy.

## PROPERTY DETAILS

- ±238,935 SF Professionally Managed Industrial Park
- Two Units Remaining:
  - > 2950 C-D: ±21,378 SF
  - > 2910 G: ±9,125 SF
- M (Las Vegas) Zoning
- ±18' to ±20' Clear Height
- Grade Level Roll Up Doors
- Fire Sprinklers at 0.21 per ±1,500 SF
- Landscaping, Painting and Exterior Signage Recently Renovated
- 2950 C-D Offers Excellent Frontage on South Highland Drive
- Close Proximity to the Las Vegas “Strip” and I-15

**Chris Connell**  
+1 702 836 3709  
chris.connell@colliers.com  
License # NV-S.0075502

**Grant Traub,**  **SIOR**  
+1 702 836 3789  
grant.traub@colliers.com  
License # NV-S.0039295



The information furnished has been obtained from sources we deem reliable and is submitted subject to errors, omissions and changes. Although Colliers Nevada, LLC has no reason to doubt its accuracy, we do not guarantee it. All information should be verified by the recipient prior to lease, purchase, exchange or execution of legal documents.

**FOR LEASE** OFFICE/WAREHOUSE FLEX SPACE

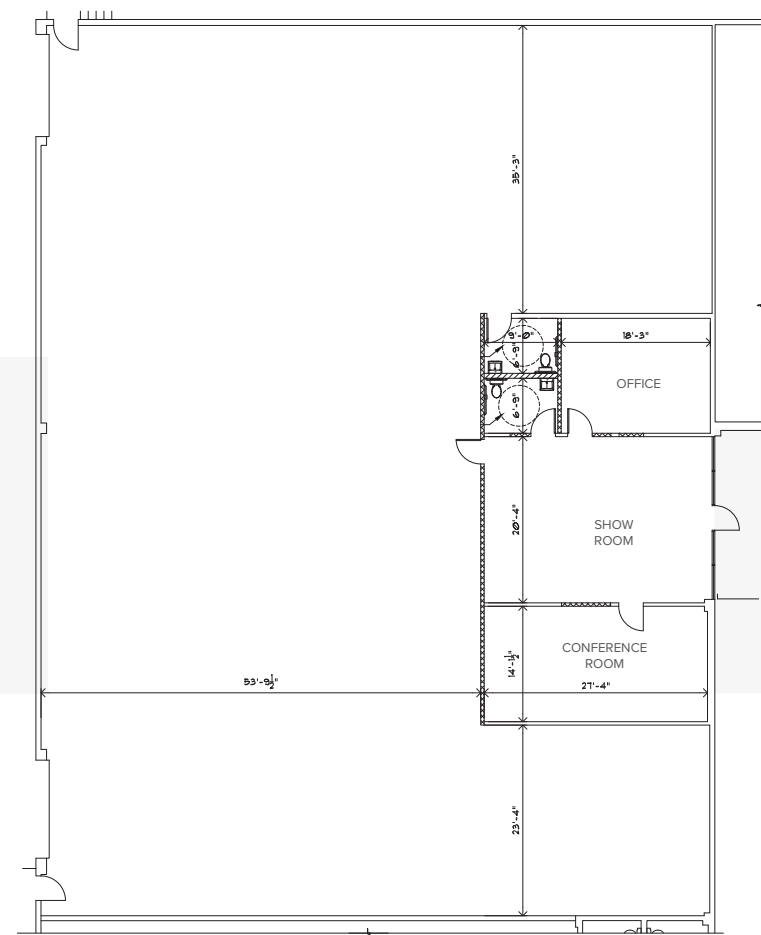
# HIGHLAND INDUSTRIAL CENTER

2910 - 3010 SOUTH HIGHLAND DRIVE // LAS VEGAS, NEVADA 89109



## 2910 SOUTH HIGHLAND DRIVE SUITE G | ±9,125 SF

- Two (2) 12'x14' Grade Level Roll Up Doors
- 18' Average Clear Height
- Power: 200 amps, 120/240 Volt, Single Phase
- **Lease Rate at \$0.85 PSF/Month**
- **CAMs estimated at \$0.14 PSF/Month**



**Chris Connell**

+1 702 836 3709

chris.connell@colliers.com

License # NV-S.0075502

**Grant Traub, SIOR**

+1 702 836 3789

grant.traub@colliers.com

License # NV-S.0039295

The information furnished has been obtained from sources we deem reliable and is submitted subject to errors, omissions and changes. Although Colliers Nevada, LLC has no reason to doubt its accuracy, we do not guarantee it. All information should be verified by the recipient prior to lease, purchase, exchange or execution of legal documents.

**FOR LEASE** OFFICE/WAREHOUSE FLEX SPACE

# HIGHLAND INDUSTRIAL CENTER

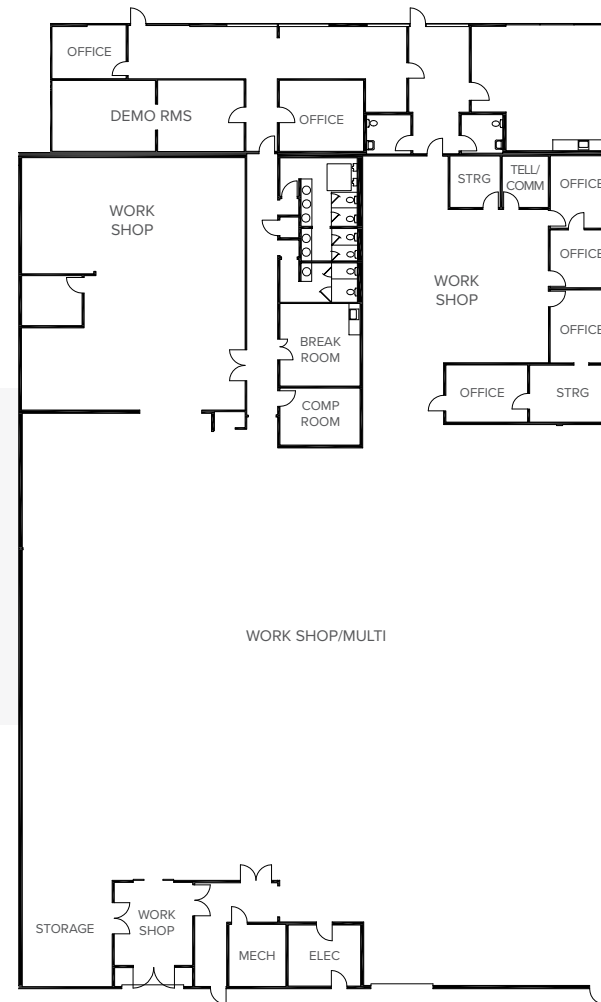
2910 - 3010 SOUTH HIGHLAND DRIVE // LAS VEGAS, NEVADA 89109



## 2950 SOUTH HIGHLAND DRIVE SUITE C-D | ±21,378 SF

- Two (2) 12'x14' Grade Level Roll Up Doors
- 20' Average Clear Height
- Power: 800 amps, 120/240 Volt, 3-Phase Power
- **Lease Rate at \$0.79 PSF/Month**
- **CAMs estimated at \$0.14 PSF/Month**

*Note: Existing floorplan to be verified.*



**Chris Connell**

+1 702 836 3709

chris.connell@colliers.com

License # NV-S.0075502

**Grant Traub, SIOR**

+1 702 836 3789

grant.traub@colliers.com

License # NV-S.0039295

The information furnished has been obtained from sources we deem reliable and is submitted subject to errors, omissions and changes. Although Colliers Nevada, LLC has no reason to doubt its accuracy, we do not guarantee it. All information should be verified by the recipient prior to lease, purchase, exchange or execution of legal documents.



LAS VEGAS "STRIP"



SPRING MOUNTAIN ROAD

DESERT INN ROAD

INDUSTRIAL ROAD

SUBJECT  
PROPERTY

SUBJECT  
PROPERTY

SOUTH HIGHLAND DRIVE



**Chris Connell**

+1 702 836 3709

chris.connell@colliers.com

License # NV-S.0075502

**Grant Traub,**  **SIR**

+1 702 836 3789

grant.traub@colliers.com

License # NV-S.0039295

The information furnished has been obtained from sources we deem reliable and is submitted subject to errors, omissions and changes. Although Colliers Nevada, LLC has no reason to doubt its accuracy, we do not guarantee it. All information should be verified by the recipient prior to lease, purchase, exchange or execution of legal documents.