

FOR LEASE > WAREHOUSE AND OFFICE SPACE



WAIPIO BUSINESS CENTER

94-1388 MOANIANI STREET, UNIT 404, WAIPAHU, HI 96797



Waipio Business Center > Unit 404

Warehouse and office space available for lease in Waipio Business Center. The Unit is 1,830 square feet of warehouse, restroom and break room space on the ground floor with air conditioned office space located at the mezzanine level.

Waipio Business Center is a Class "A" industrial condominium project located on Moaniani Street in Waipio, with access to all areas of the island.

Unit Amenities

- > 2 newly built private offices with a/c at the mezzanine level
- > 3 dedicated parking stalls available
- > Includes 12' rollup door
- > 2 common loading docks on site
- > Great set-up for an operator in the construction industry

TMK No.: (1) 9-4-128-11-88

Size Available: Ground Floor - 1,830 SF
Mezzanine - 525 SF

Base Rent: \$1.30 psf per month

CAM: \$0.48 psf per month

Contact Us

ALIKA W. COSNER (S)

Investment and Industrial Services Divisions
808 523 8339

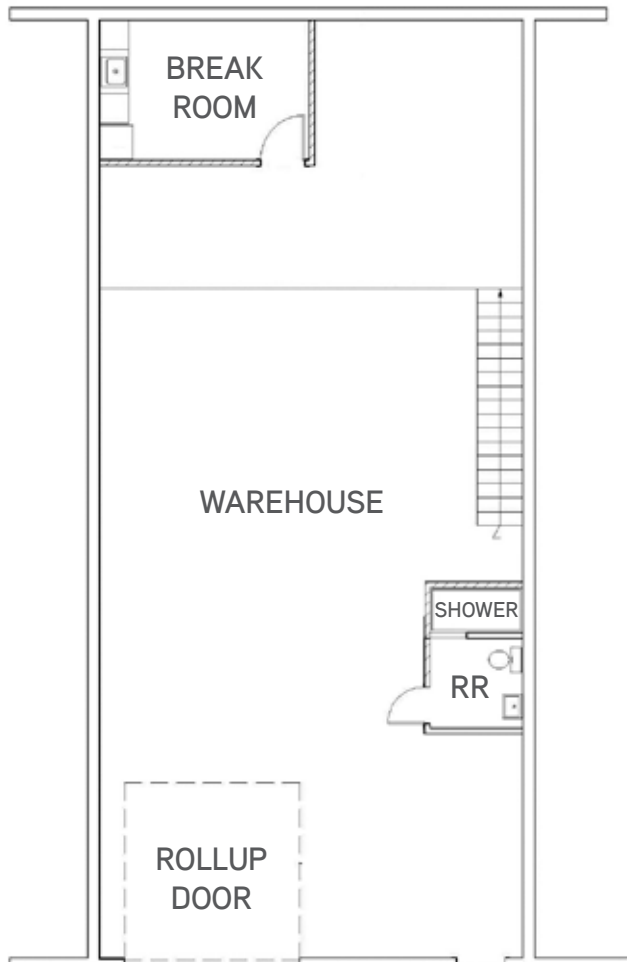
alika.cosner@colliers.com

Copyright © 2016 Colliers International
This document has been prepared by Colliers International for advertising and general information only. Colliers International makes no guarantees, representations or warranties of any kind, expressed or implied, regarding the information including, but not limited to, warranties of content, accuracy and reliability. Any interested party should undertake their own inquiries as to the accuracy of the information. Colliers International excludes unequivocally all inferred or implied terms, conditions and warranties arising out of this document and excludes all liability for loss and damages arising there from. This publication is the copyrighted property of Colliers International and/or its licensor(s). All rights reserved.

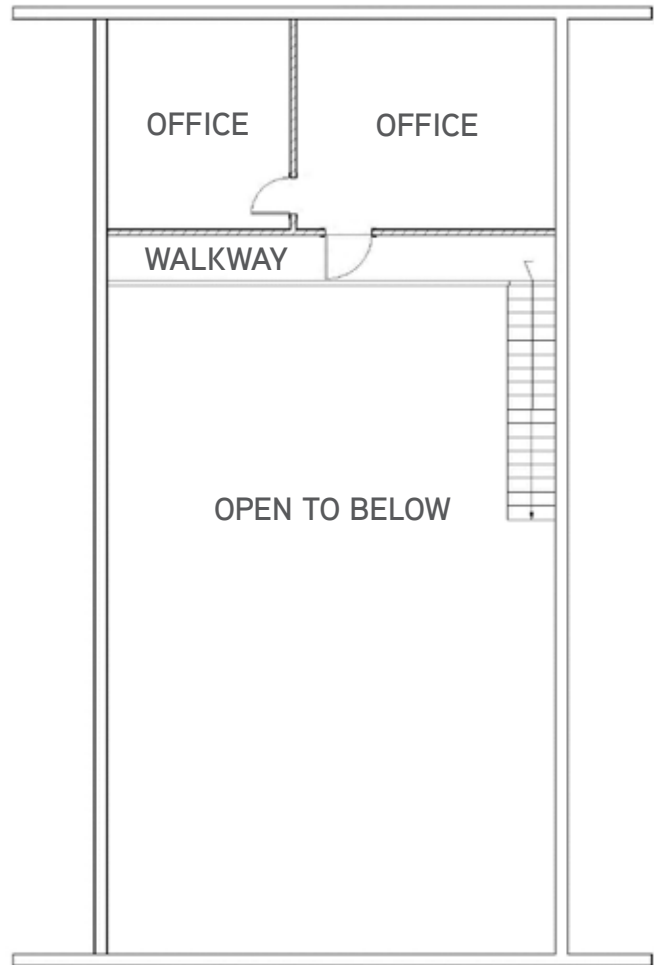
COLLIERS INTERNATIONAL
220 S. King Street, Suite 1800
Honolulu, HI 96813
www.colliers.com/hawaii

Waipio Business Center > Site Plan

GROUND FLOOR



MEZZANINE LEVEL



ELEVATION VIEW

