

FOR SALE > MULTIFAMILY, SINGLE-FAMILY OR SENIOR LIVING LAND

Colliers
INTERNATIONAL

±14.17 Acres on Parklane Road

8444 PARKLANE ROAD, COLUMBIA, SOUTH CAROLINA 29223



Property Details

- > Zoned general commercial
- > **Traffic counts:**
 - Parklane Road- 12,500 VPD
 - Farrow Road- 22,500 VPD
 - Interstate 77- 82,500 VPD
- > **Frontage:**
 - Parklane Road- 400 feet
 - Interstate 77- 450 feet
- > Water and sewer available
- > Property may be subdivided
- > **Price:** \$992,000.00

Richland School District 2:

Elementary

- > Joseph Keels Elementary School

Middle School

- > Dent Middle School

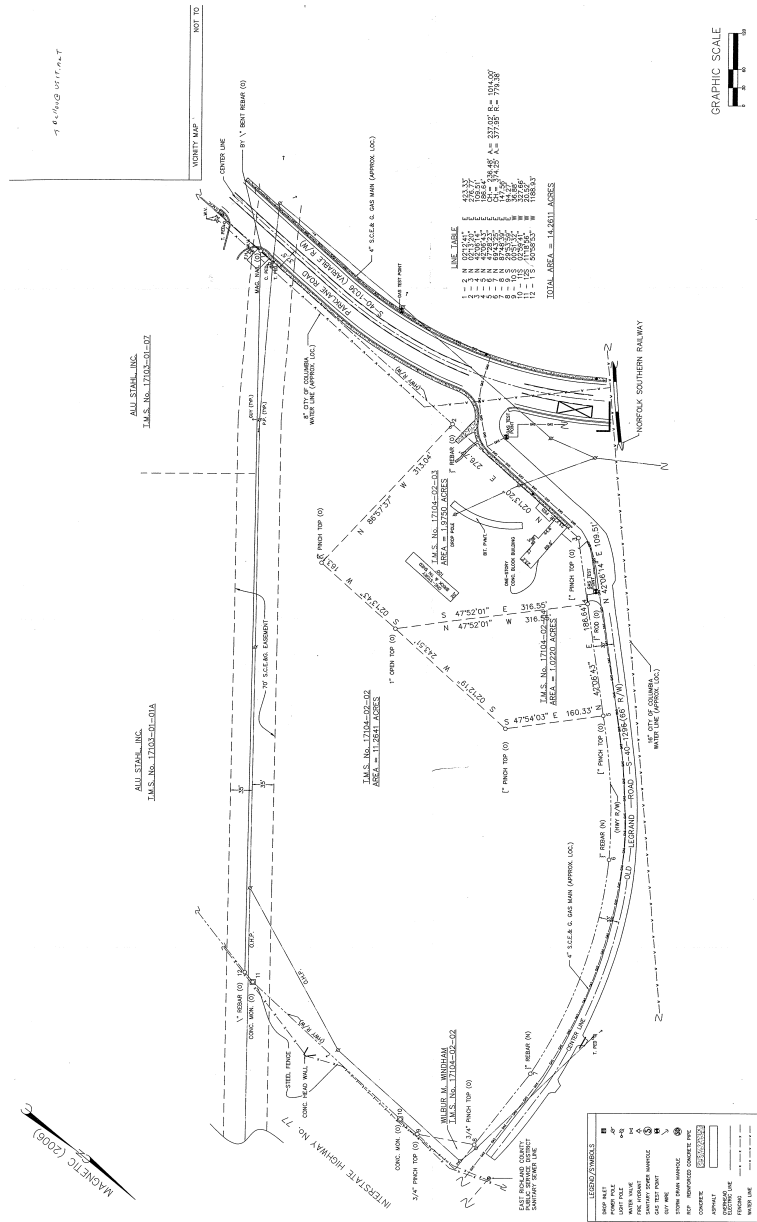
High School

- > Westwood High School with option to Richland Northeast

CRAIG WAITES
803 401 4224 DIRECT
craig.waites@colliers.com

COLLIERS INTERNATIONAL
1301 Gervais Street, Suite 600
Columbia, South Carolina 29201
www.colliers.com

Parklane Road > Survey & Demographics



Contact Us

CRAIG WAITES

803 401 4224 DIRECT

craig.waites@colliers.com

Demographics (2017)

	1 mile	3 miles	5 miles
Population:	2,847	38,553	107,331
Households:	1,492	15,278	42,784
Average Household Income:	\$50,670	\$58,462	\$69,692

COLLIERS INTERNATIONAL
1301 Gervais Street, Suite 600
Columbia, South Carolina 29201
www.colliers.com

This document has been prepared by Colliers International for advertising and general information only. Colliers International makes no guarantees, representations or warranties of any kind, expressed or implied, regarding the information including, but not limited to, warranties of content, accuracy and reliability. Any interested party should undertake their own inquiries as to the accuracy of the information. Colliers International excludes unequivocally all inferred or implied terms, conditions and warranties arising out of this document and excludes all liability for loss and damages arising there from. This publication is the copyrighted property of Colliers International and/or its licensor(s). ©2014. All rights reserved.

